

cooper
homes

THE KINGSWOOD

514

SPECIFICATION FEATURES

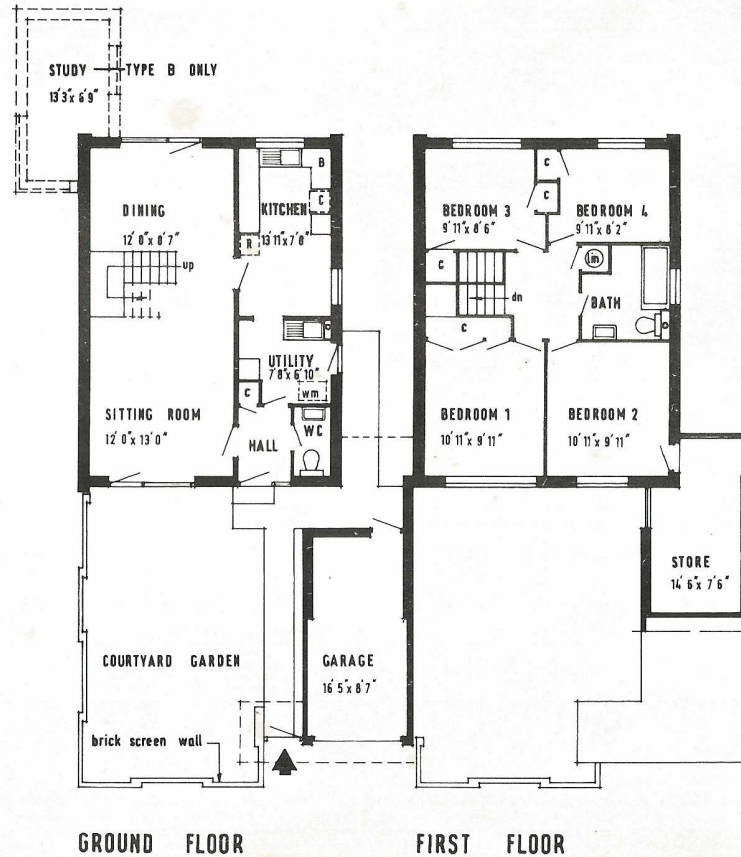
cooper
homes

THE KINGSWOOD

AT 'RIVERSIDE' BRIDGE NEAR CANTERBURY

The following features are all included in the house:-

- Gas fired boiler for central heating and constant domestic hot water. Radiators in hall, reception rooms, bathroom and bedrooms.
- Elegantly styled Regency wall and floor kitchen units with the 'easy to clean' Melamine laminated surfaces.
- Utility room equipped with sink unit and cupboards.
- High quality stainless steel sink top fitted to sink units.
- Choice of coloured sanitaryware in bathroom from available range of colours.
- Thermoplastic tiles to all of ground floor.
- Half tiled bathroom in white glazed tiles with choice of colours from our standard range as optional extra. Part tiled kitchen in white.
- Thermostatically controlled electric immersion heater fitted in the insulated hot water cylinder.
- Generous supply of lighting and power points.
- Road and footpaths constructed to local authority specification.
- N.H.B.R.C. 10 year protection.



A full detailed specification is available for your inspection at our local sales office.

Ask our Representative for details of the excellent mortgage facilities available to purchasers of Cooper homes.

Nothing contained in this leaflet shall constitute or form part of any Contract, representation or warranty, expressed or implied. The leaflet is intended as a guide only and is not a specification. Since individual houses bearing the same type name may in fact differ, the purchaser should rely on the plan and specification referred to in his Contract.

Cooper Homes

Gough Cooper & Company Ltd.,
Wilmington, Dartford, Kent.
Telephone: Dartford 23400.