

Penbourne House
High Street
Bridge, Kent



General Accident
Property Services



Price Guide: £165,000

- Accommodation comprises of: Lounge • Dining room • Breakfast room •
- Kitchen • Cloakroom • Four bedrooms: Master Bedroom with En-suite Bathroom •
- Shower Room to Bedroom 2 • Family Bathroom • Gardens front and rear • Garage •

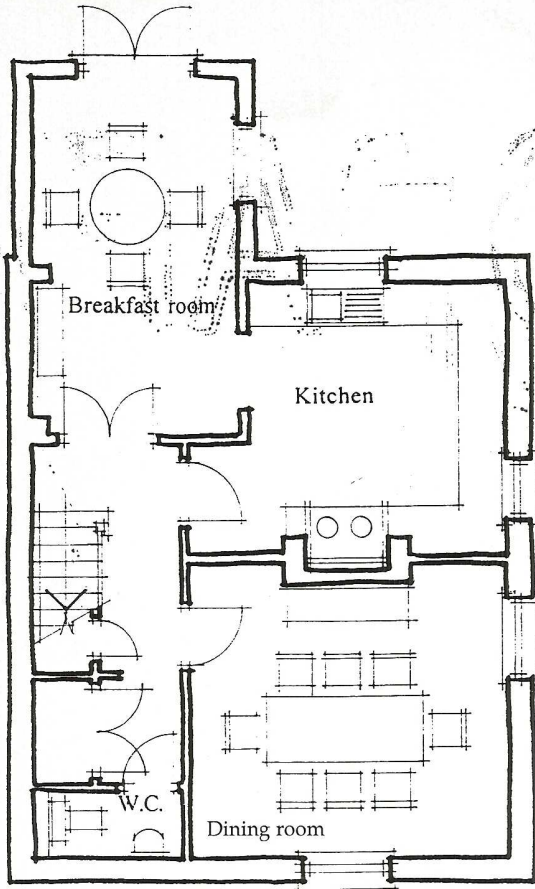
A new architect designed detached family house of character situated in the village of Bridge which lies to the South of Canterbury. The village provides local shopping facilities, school, bus service, and main line railway station to London approximately 1½ miles away at Bekesbourne.

The Cathedral City of Canterbury with its cultural interests, choice of schools, recreational facilities and shopping centre is approximately 4 miles.

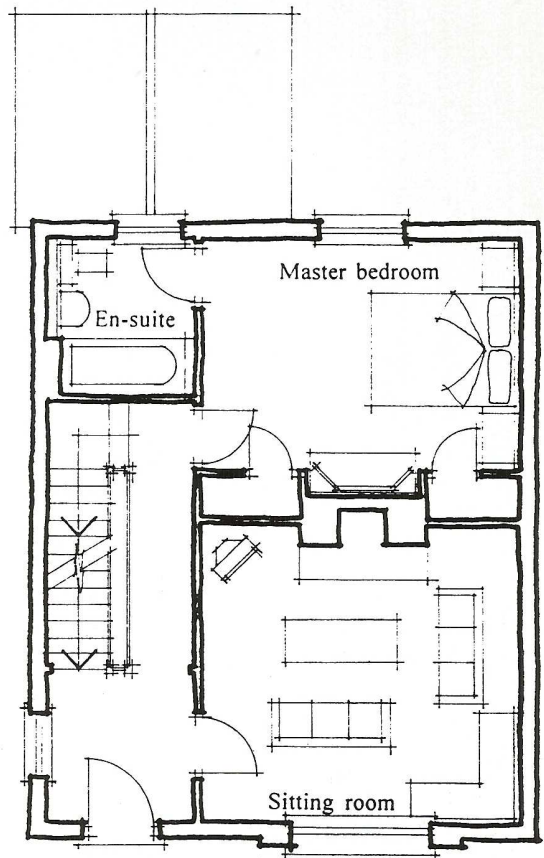
VIEWING ARRANGEMENTS:

By appointment through GA Property Services, 3 St Margaret's Street, Canterbury, Kent CT1 2TP.

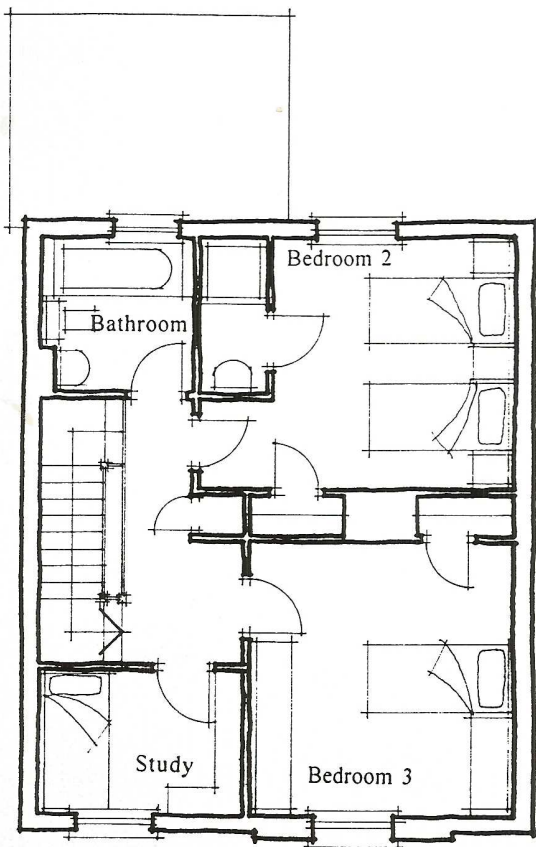
Tel: (01227) 454925.



SEMI BASEMENT PLAN



GROUND FLOOR PLAN



FIRST FLOOR PLAN

SEMI BASEMENT

Breakfast Room	9' 2" x 16' 6"
Kitchen	14' 2" x 12' 2"
Dining Room	14' 2" x 13' 2"
W.C.	6' 7" x 3'

GROUND FLOOR

Sitting Room	14' 2" x 13' 2"
Master Bedroom	14' 2" x 11' 2"
En-suite	6' 7" x 6' 11"

FIRST FLOOR

Bedroom 2	10' 10" x 11' 6"
Shower Room	6' 7" x 3'
Bathroom	6' 7" x 7' 3"
Bedroom 3	11' 10" x 11' 10"
Study	8' 10" x 6' 3"

EXTERNAL

- Garage
- Car parking
- Landscape garden

The particulars provided are a general guide only. Any intending purchaser must satisfy themselves by inspection or otherwise as to the correctness of any statement, plan or illustration contained within.