



The Shippe and Primrose Cottage Bridge, Canterbury

STRUTT & PARKER

The Shippe and Primrose Cottage

40 and 42 High Street, Bridge, Canterbury, Kent CT4 5JZ

A charming, timber-framed village house and adjoining cottage

A2/M2 1 mile, Canterbury 3 miles, Central London 63 miles

Lot 1 – The Shippe: 2 Reception rooms
Kitchen | 5 Bedrooms | Garden | Parking

Lot 2 – Primrose Cottage: 2 Reception rooms
Kitchen | 2 Bedrooms | Courtyard garden

The Property

The Shippe and Primrose Cottage are picturesque, Grade II Listed properties situated in the heart of the village and dating to late 15th/early 16th Century.

Lot 1 – The Shippe

The Shippe is a fascinating property, part of which was once an oast house, as evidenced by the kilns which remain to create a most unusual room with a vaulted brick ceiling. The accommodation is arranged around a good sized central hall, off which is a bright double aspect sitting room with a wood burning stove.



A dining room continues through to the kitchen, which is fitted with beautiful handmade cabinets. On the first floor are five bedrooms, two of which interconnect. The Shippe enjoys a sheltered garden which is fenced on all sides and laid to lawn with mature apple and walnut trees. A parking space is situated to one side of the property behind double gates.

Lot 2 – Primrose Cottage

Primrose Cottage provides excellent additional accommodation adjacent to the main house. The cottage has a sitting room with an inglenook fireplace as well as a separate dining room and kitchen. The kitchen beyond has a door opening into a private courtyard garden. Two good sized bedrooms and a bathroom are found on the first floor.

Location

Bridge is a sought after village 3 miles to the south of Canterbury, and is well placed to access the excellent facilities found within the city; the village itself has a range of local shops. Access to the A2 enables swift connection with the motorway network.

General

Local Authorities – Canterbury City Council (01227 862000); Kent County Council (03000 414141)

Services – The Shippe and Primrose Cottage have all mains services.

Agent's Note – Lot 2 will not be sold before Lot 1.







Primrose Cottage



Primrose Cottage



Primrose Cottage





Directions

From the A2 take the exit signposted to Bridge and Patribourne. At the end of the slip road, turn right towards Bridge. At the T-junction turn left and descend the hill into Bridge village and continue along the High Street. The Shippe (no. 42) and Primrose Cottage (no. 40) will be found on the right hand side.

Floorplans

Gross internal area. House: 2,993 sq ft (278.1 sq m)
Cottage: 1,134 sq ft (105.4 sq m). For identification purposes only.

For illustrative purposes only – not to scale

The position and size of doors, windows, appliances and other features are approximate only.

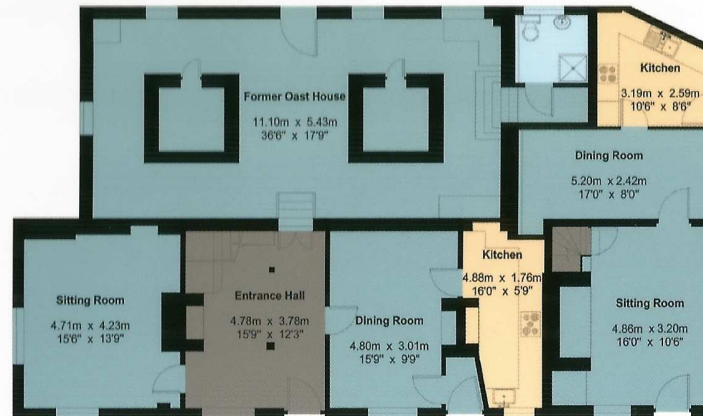
The Shippe & Primrose Cottage

House - Gross Internal Area : 278.1 sq.m (2993 sq.ft.)

Cottage - Gross Internal Area : 105.4 sq.m (1134 sq.ft.)



First Floor



Ground Floor

For Identification Purposes Only.
© 2014 Trueplan (UK) Limited (01892) 614 881

Canterbury

2 St Margaret's Street, Canterbury, Kent CT1 2SL

01227 451123

canterbury@struttandparker.com
struttandparker.com

50 offices across England and Scotland,
including 10 offices in Central London

IMPORTANT NOTICE Strutt & Parker LLP for themselves and for the Vendors of this property, whose agents they are, give notice that: 1. The particulars are intended to give a fair and substantially correct overall description for the guidance of intending purchasers and do not constitute part of an offer or contract. Prospective purchasers and lessees ought to seek their own professional advice. 2. All descriptions, dimensions, areas, reference to condition and necessary permissions for use and occupation and other details are given in good faith, and are believed to be correct, but any intending purchasers should not rely on them as statements or representations of fact, but must satisfy themselves by inspection or otherwise as to the correctness of each of them. 3. No person in the employment of Strutt & Parker LLP has any authority to make or give any representations or warranty whatever in relation to this property on behalf of Strutt & Parker LLP, nor enter into any contract on behalf of the Vendor. 4. No responsibility can be accepted for any expenses incurred by intending purchasers in inspecting properties which have been sold, let or withdrawn. Photographs taken June 2014. Particulars prepared June 2014. Ref: 12547. MEASUREMENTS AND OTHER INFORMATION All measurements are approximate. While we endeavour to make our sales particulars accurate and reliable, if there is any point which is of particular importance to you, please contact this office and we will be pleased to check the information for you, particularly if contemplating travelling some distance to view the property.

Exclusive UK affiliate of Christie's International
Real Estate with 932 affiliate offices in 44 countries

CHRISTIE'S
INTERNATIONAL REAL ESTATE

STRUTT & PARKER