

SATURDAY 14 MAY 2011

**KENT HISTORY FEDERATION
CONFERENCE AT BROMLEY**

The Kent History Federation annual conference will take place at Bromley this year. As usual a series of lectures on local history in the morning followed by visits in the afternoon. We want to encourage more members to attend this event and full details will be sent to you if you fill in the slip on the visits form

WEDNESDAY 22 JUNE 2011

AN EVENING VISIT TO WYE

A visit in members' own cars to Wye for a guided walk, conducted by Meriel Conner, around the centre of Wye with its older houses and cottages clustering around the Church of SS. Gregory and Martin. After the tour refreshments in a local hostelry. Entry into the Wye College buildings is unlikely as they are mothballed. This tour is subject to weather permitting, if the forecast is cold and wet it will be cancelled.

6.00 pm Wye Church
Members £3.00, non-members £4.00

mc

**Reasons for belonging to Bridge and
District History Society**

The Society does enable our members to visit many places that are either not normally open to the general public or will only allow visits in groups. Good examples of this are the visits we have recently undertaken to Provender, Tappington Hall, Saltwood Castle and in this programme, Westenhanger Castle. In addition many of the lectures are on topics of local interest and it is noticeable that the more local the topic the greater the audience. We try to offer a varied programme but if there is anything you would like to see included, let us know.

THURSDAY 23 SEPTEMBER 2010

ANNUAL GENERAL MEETING

The first meeting of the year will be preceded by a short Annual General Meeting, to review last years programme and to hear the Treasurer's report, this will also be an opportunity for you to have a say in what you would like the Society to do for you.

7.30 pm Bridge Village Hall



Bridge & District History Society was formed in 1995 to promote interest in aspects of local history in and around the villages of Barham, Bekesbourne, Bishopsbourne, Bridge, Kingston and Patricxbourne.

County-wide Aspects are served through the Society's membership of the Kent History Federation.

The evening meetings are informal and sociable. Transport and or escorts can usually be arranged with other members living nearby.

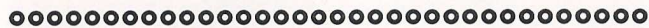
On trips outside Bridge those without transport can usually be accommodated in the spare seats. Please contact the organiser of each event for arrangements.

Please contact any Society officer or committee member if you need any help.



Membership is annual commencing in September. Rates are £7.00 single, £12.00 double and £5.00 for each additional person residing at the same address.

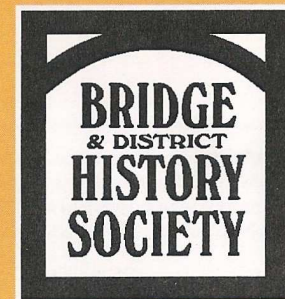
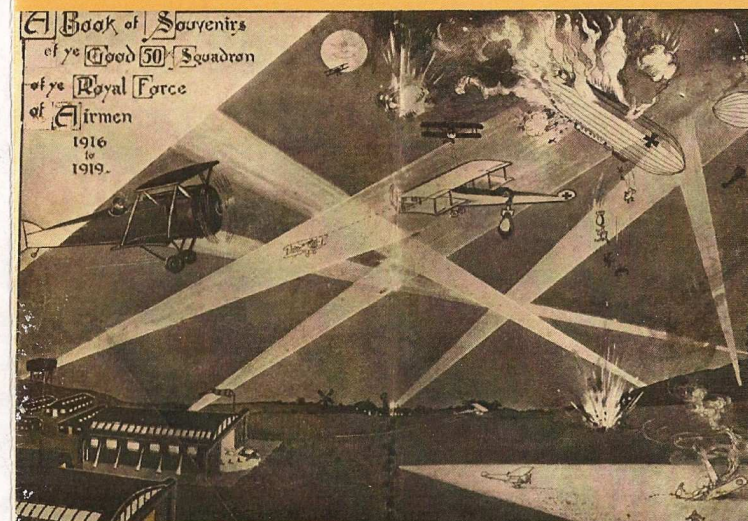
Newsletters with a record of previous meetings and advance notice of the next events will be sent out when required



Chairman Maurice Raraty Tel. 830508
Secretary Jenny Vye Tel. 830983
Treasurer John Cardy Tel. 721360
Committee
Meriel Conner Tel. 830487
Tim Derouet Tel. 730080
Hilary Derouet Tel. 730080
David Gilmour Tel. 832450
Joan Hill Tel. 830215
Alan Walton Tel. 832351

PROGRAMME

2010-2011



THURSDAY 23 SEPTEMBER 2010

HELLFIRE CORNER

A talk by John Grimwood on this area of East Kent in the Second World War when it was subjected to shelling and bombing. Bridge Blean district was one of the most heavily bombarded districts in the country and John's talk will cover the experience of this area at a time of great anxiety.

7.30 pm Bridge Village Hall
Members £3.00, non-members £4.00 including refreshments mr

THURSDAY 21 OCTOBER 2010

RICHBOROUGH CASTLE

Dr. Frank Andrews will give a talk on the up to date finds at Richborough Castle, still the finest example of a Roman fort. This was the first place occupied by Romans and was their final point of departure and so are the longest occupied Roman remains in England.

Bridge Village Hall 7.30 pm
Members £3.00, non-members £4.00 including refreshments td

THURSDAY 18 NOVEMBER 2010

BEKESBOURNE AERODROME

A talk by Geoffrey Hall, an aviation enthusiast on Bekesbourne Aerodrome. This aerodrome was extensively used in the First World War to launch attacks against German bombers trying to reach London. We are fortunate to have a good photographic record made by the airmen of the time.

7.30 pm Bridge Village Hall
Members £3.00, non-members £4.00 including refreshments. dg

THURSDAY 16 DECEMBER 2010

CHRISTMAS HOG ROAST

We have arranged a Hog Roast in the Village Hall. Yes it is in the Village Hall. We will have an enjoyable meal and the cost will include a glass of wine or soft drink. A sociable and festive occasion with a Photo quiz and a raffle to keep you amused during the evening.

Bridge Village Hall 7.30 pm
Members £10.00, non-members £15.00 including first drink. hd

THURSDAY 20 JANUARY 2011

NOW AND THEN

A group led by Eric Hartland have converted some very old glass plate negatives, in the Centre for Kentish Studies, into digital images. Those with specific views have been re-photographed from the same spot so that we have a now and then view. The views will include Canterbury and East Kent.

7.30 pm Bridge Village Hall
Members £3.00 non-members £4.00 including refreshments dg

THURSDAY 17 FEBRUARY 2011

MEMBERS' EVENING

Alan Forrester will talk about his extensive collection of very early sound reproduction equipment and will play some of the very early records. A fascinating opportunity to hear sounds recorded in the late 19th and early 20th century.

7.30 pm White Horse Hotel, Bridge.
Members £6.00, non-members £8.00 including refreshments. dg

THURSDAY 17 MARCH 2011

**LIFE IN A KENTISH VILLAGE
IN VICTORIAN TIMES**

Helen Allison, a well known author and speaker will talk about life in a Kentish village in Victorian times. A look back at times when life was harder than now without electricity, gas and often no running water, Helen will talk mainly about the inhabitants of a village.

7.30 pm Bridge Village Hall
Members £2.00, non-members £3.00 mr

WEDNESDAY 13 APRIL 2011

**VISIT TO HUGH WALPOLE
LIBRARY**

The King's School, Canterbury, literary tour, hosted by Peter Henderson, KSC archivist, looks at two major collections bequeathed by prominent Old King's Scholars. The Maugham library contains about 2,000 books owned by William Somerset Maugham. The Hugh Walpole Collection is a superb selection of literary manuscripts by many English authors of the nineteenth and early twentieth centuries. Included are: the Bronte sisters, Lewis Carroll, Rudyard Kipling, Virginia Woolf, W.B. Yeats, D.H. Lawrence and many more.
Kings School 3.00 pm
Members only £3.00 aw

WEDNESDAY 18 MAY 2011

**VISIT TO WESTENHANGER
CASTLE**

A visit in members' own cars to the 14th century Westenhanger Castle and medieval Barn, which has undergone 10 years of conservation. We will have a private guided tour visiting some of the rooms not normally open to the general public, finishing with a cream tea

Westenhanger Castle 2.30 pm
Members £ 15.00 non members £18.00 including cream tea jv