

SATURDAY 12 MAY 2012

**KHF CONFERENCE
AT HEADCORN**

The Kent History Federation annual conference will take place at Headcorn this year. The format of the conference will be various topics of discussion in the morning followed by visits to places of interest nearby in the afternoon. For information on this conference please complete the slip in the visit form.

WEDNESDAY 16 MAY 2012

COAL MINING IN KENT

Jim Davies was a Miner for 33yrs and was at Betteshanger when it closed on 25th Aug 1989 (the last to do so) although he stayed on till March 1990 overseeing the infill of the shaft, and so is well qualified to talk on the History of Mining in Kent.

7.30 pm Village Hall, Bridge
Members £3.00, non-members £4.00, including refreshments td

WEDNESDAY 20 JUNE 2012

EVENING VISIT TO DOVER

Keith Parfitt, our leader on this walk, was the archaeologist from Canterbury Archaeological Trust who in 1992 made the discovery of the remarkable Dover Bronze Age boat. The ancient Cinque Port of Dover is full of historical and archaeological interest. We will explore some of its streets and learn something of its fascinating history – possibly finishing at a friendly pub

6.00 pm Market Square Dover
Members £3.00 Non members £4.00 mc

THURSDAY 22 SEPTEMBER 2011

ANNUAL GENERAL MEETING

The first meeting of the year will be preceded by a short Annual General Meeting, to review last years programme and to hear the Treasurer's report, this will also be an opportunity for you to have a say in what you would like the Society to do for you.
7.30 pm Bridge Village Hall.



Bridge & District History Society was formed in 1995 to promote interest in aspects of local history in and around the villages of Barham, Bekesbourne, Bishopsbourne, Bridge, Kingston and Patribourne.

County-wide Aspects are served through the Society's membership of the Kent History Federation.

The evening meetings are informal and sociable. Transport and or escorts can usually be arranged with other members living nearby.

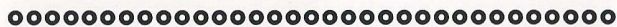
On trips by members cars, those without transport can usually be accommodated in the spare seats. Please contact the organiser of each event for arrangements.

Please contact any Society officer or committee member if you need any help.



Membership is annual commencing in September. Rates are £7.00 single, £12.00 double and £5.00 for each additional person residing at the same address.

Newsletters with a record of previous meetings and advance notice of the next events will be sent out when required.

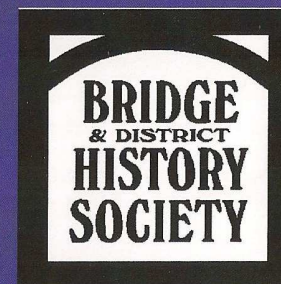
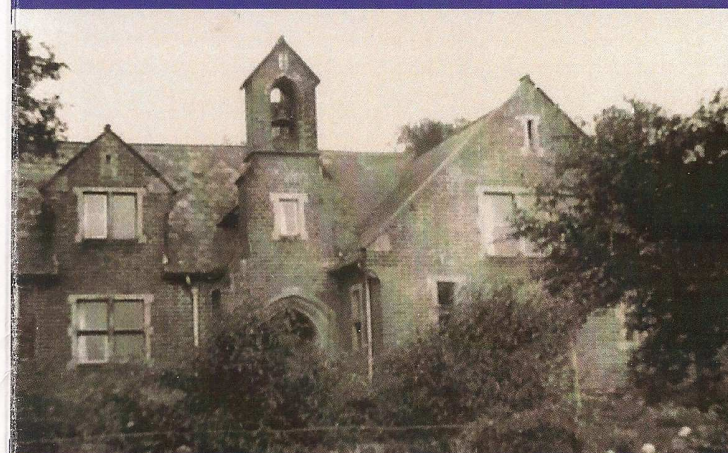


Chairman Maurice Raraty Tel. 830508
Secretary Jenny Vye Tel. 830983
Treasurer John Cardy Tel. 721360
Committee

Alan Barber Tel: .831956
Meriel Conner Tel. 830487
Hilary Derouet Tel. 730080
Tim Derouet Tel. 730080
David Gilmour Tel. 832450
Joan Hill Tel. 830215
Alan Walton Tel. 832351

PROGRAMME

2011-2012



**WEDNESDAY 14 SEPTEMBER
2011**

VISIT TO DENTON COURT

A rare opportunity to visit Denton Court and Church. The house is late 18th-early 19th century Grade II listed and is not normally open to the public. After visiting the house we will go on to visit Denton Church. Numbers are restricted so book very early.

2.30 pm Meet at Denton Court—parking available.

Members £7.00, non-members £10.00,

jv

THURSDAY 22 SEPTEMBER 2011

METHODISTS IN CANTERBURY

A talk by Dr. Doreen Rosman on the development of Methodist societies in Canterbury One of the people who will feature in her talk, Thomas Finch Cozens, was a trustee of the first Methodist chapel in Bridge, now the village hall.

7.30 pm Village Hall, Bridge

Members £3.00, Non members £4 including refreshments

ab

A short Annual General Meeting will precede this meeting.

THURSDAY 27 OCTOBER 2011

FORDWICH U3A PROJECT

David Lewis will be talking about the Fordwich History project undertaken at the request of Fordwich Town Council by the University of the Third Age (U3A) to illustrate the history of Fordwich in an accessible way for visitors. His information will hopefully inspire Bridge to carry out a similar project.

7.30 pm Village Hall, Bridge,

Members £3.00 non-members £4.00, including refreshments.

dg

THURSDAY 17 NOVEMBER 2011

**FAMOUS WOMEN IN TUDOR AND
STUART KENT**

Prof. Jackie Eales will be talking about "The monstrous regiment of Women—Famous women in Tudor and Stuart Kent". An intriguing title for what will be an intriguing talk. Prof. Eales is a local resident and president of the Historical Association (National body).

7.30 pm Village Hall, Bridge

Members £3.00, non-members £4.00, including refreshments.

jv

THURSDAY 15 DECEMBER 2011

CHRISTMAS EVENING

A Christmas Dinner at a very reasonable price combining excellent food with convivial company and a very seasonal atmosphere. As last year there will be a prize quiz and a raffle.

7.00 pm for 7.30 pm Red Lion Inn, Bridge

Members only, £12.00 including the first glass of wine and the buffet

jc

THURSDAY 19 JANUARY 2012

**MEMBERS' EVENING
EDUCATION IN BRIDGE**

A talk by Alan Barber and David Gilmour, mainly on the Victorian school in Patricbourne Road but also including the earlier establishments offering education in Bridge and District. Numbers are restricted so please book early.

7.30 pm White Horse Inn, Bridge

Members £7.00, non-members £8.00, including buffet

dg

THURSDAY 16 FEBRUARY 2012

LIFE IN A KENTISH VILLAGE

A talk by Helen Allinson on life in a Kentish village in Victorian times. Helen is a very entertaining speaker and will outline how our ancestors coped with village life.

7.30 pm Village Hall, Bridge.

£3.00 members, £4.00, non-members including refreshment.

dg

THURSDAY 15 MARCH 2012

**CANTERBURY'S MEDIEVAL
HOSPITALS**

Sheila Sweetingburgh is a lecturer at the University of Kent at Canterbury and will enlighten us with her talk on the predecessors to our hospitals when prayer was considered to be a better cure than medicine.

7.30 pm Village Hall, Bridge.

£3.00 members, £4.00, non-members including refreshment.

dg

THURSDAY 12 APRIL 2012

A VISIT TO WESTGATE TOWERS

Westgate Towers and the police station next door have been refurbished and restored with the 1830's gaol now newly opened for visiting A guide will share the amazing story of Britain's largest Medieval Gateway and its occupants, together with the Old City Gaol. Teas available after the tour in the café. Numbers will be limited—please apply early.

2.45 pm Café of Westgate Towers

Members only £6.00 including guided tour

jh