

the Garden of England

Kent

Kent is affectionately known as the 'Garden of England' because of its quintessentially English countryside – orchards full of blossom, oast houses, majestic castles and beautiful gardens give the county a unique and irresistible charm.

Visit Kent once and you'll soon be back.

Visitor Attractions

You'll never be short of somewhere to go for a day out in Kent. Kent provides a heady mix of opportunities for those wanting to try out new experiences. This diverse county is packed with unique attractions and exciting places to visit.

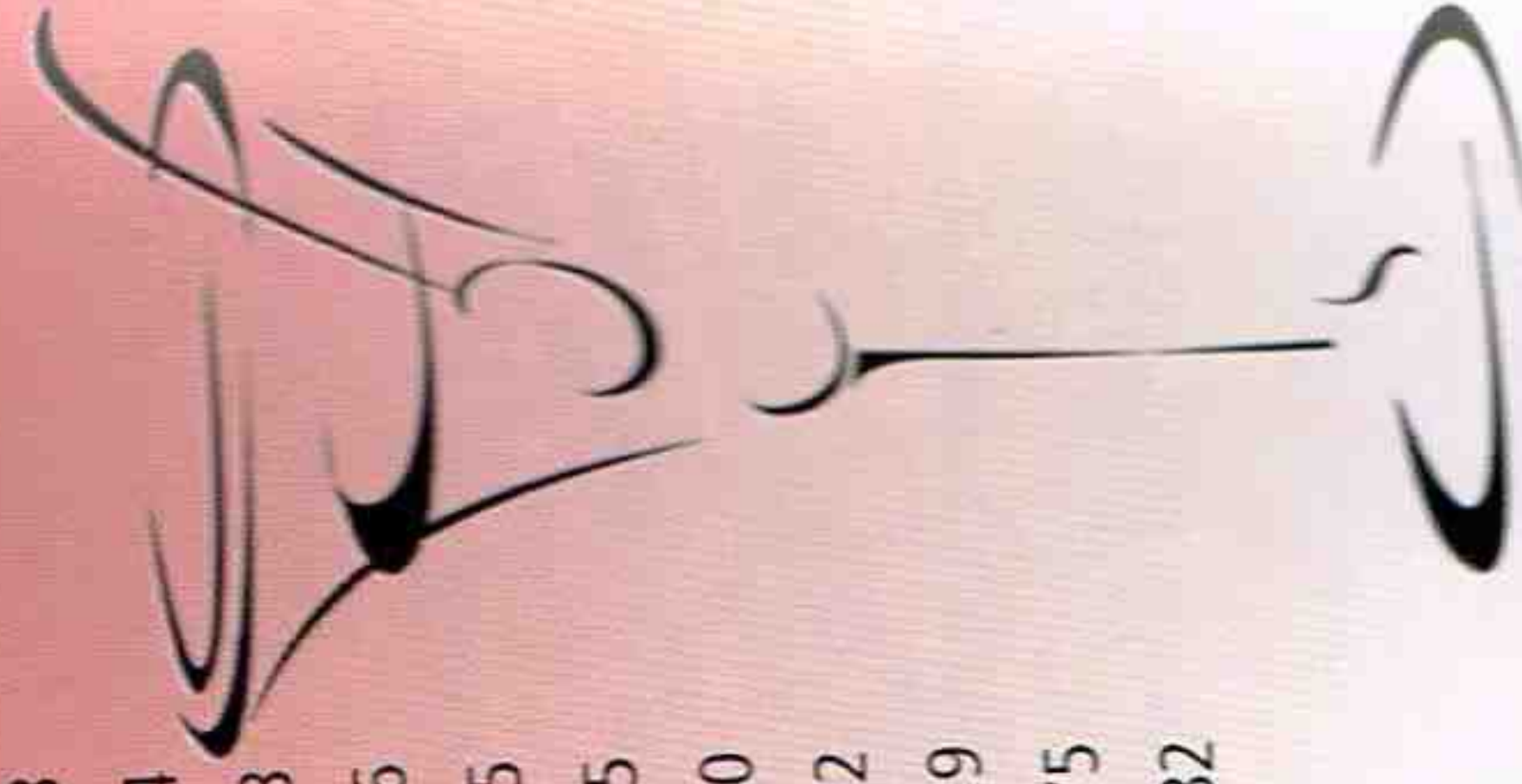
Tourist Information Centres

For information and advice you may need during your stay in Kent, visit any of the counties Tourist Information Centres. There is one in all the major towns and cities, as well as some larger villages. Friendly staff can advise you on everything from attractions and events, to restaurants, entertainment and even accommodation bookings.

For further information on what to see and do, where to stay in Kent visit www.kenttourism.co.uk or telephone 0906 294 1191* calls are charged at 25p per minute.

Tourist Information Centres

ASHFORD	T: (01233) 629165
ASHFORD MCARTHUR GLEN	
DESIGNER OUTLET	T: (01223) 628181
BROADSTAIRS	T: (01843) 583333
CANTERBURY	T: (01227) 378100
CRANBROOK (Summer Only)	T: (01580) 712538
DEAL	T: (01304) 369576
DOVER	T: (01304) 205108
EDENBRIDGE	T: (01732) 868110
FAVERSHAM	T: (01795) 534542
GRAVESEND (TownCentric)	T: (01474) 337600
HERNE BAY	T: (01227) 361911
MAIDSTONE	T: (01622) 602169
MARGATE	T: (01843) 583333
NEW ROMNEY	T: (01797) 364044
RAMSGATE	T: (01843) 583333
ROCHESTER	T: (01634) 843666
SANDWICH	T: (01304) 613565
SEVENOAKS	T: (01732) 450305
SWANLEY	T: (01322) 614660
TENTERDEN (summer only)	T: (01580) 763572
TONBRIDGE	T: (01732) 770929
TUNBRIDGE WELLS	T: (01892) 515675
WHITSTABLE	T: (01227) 275482



Acknowledgements

With thanks to John Moir for the concept, research and contents of this leaflet and to the family of Ian Fleming.

Produced by: Kent County Council Economic Development Unit, in conjunction with Kent Tourism Alliance.

MOONRAKER by Ian Fleming copyright © Glidrose Productions Ltd 1955.
GOLDFINGER by Ian Fleming copyright © Glidrose Productions Ltd 1959.

Reprinted with the permission of Ian Fleming Publications Ltd.
www.ianflemingcentre.com. All the James Bond books by Ian Fleming are currently available through Penguin Books. www.Penguin.co.uk.

Photograph of Ian Fleming reproduced with the permission of the Estate of Ian Fleming.

JAMES BOND COUNTRY



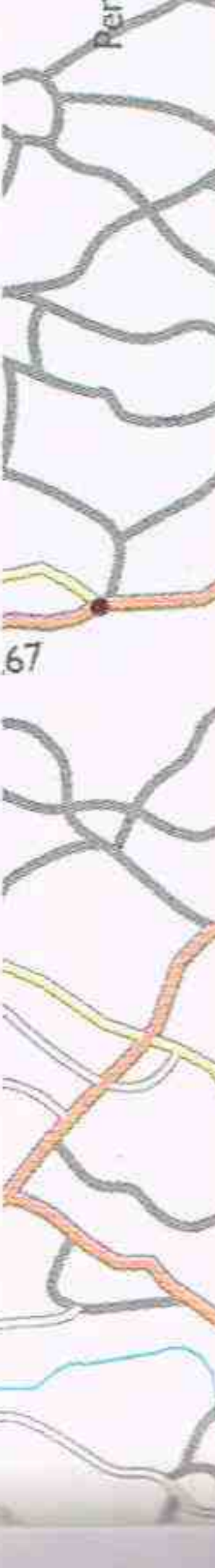
The Goldfinger Route



The Moonraker Route



Kent has a vast network of footpaths and walks. If you would like to explore any of these on foot, please visit www.kent.gov.uk/countrysideaccess or call 01622 663306, Monday - Friday, 11am - 3pm.



The Moonraker route



From London, turn off the M20 at junction 8 for the A20. Follow the A252 up Charing Hill to Chilham and the A28 to Canterbury. Then the A2 to Dover.

Maidstone to Charing

“At six o’clock that Tuesday evening towards the end of May, James Bond was thrashing the big Bentley down the Dover road along the straight stretch that runs into Maidstone.” For this, take junction 4 off the M20. You might identify the Thomas Wyatt Hotel *“just outside Maidstone”* where

Gala Brand tried to outwit Sir Hugo Drax on their way back to London. The duel between Bond in his Bentley and Drax in his white Mercedes took place on the A20 between Leeds Castle and Charing –



“The Mercedes was a beautiful thing... It was a type 300S, the sports model with a disappearing hood”. They were unexpectedly joined by a supercharged straight-eight red Alfa Romeo, which Drax edged off the road to crash and kill its young driver.

Charing Hill

“Drax took the left-hand fork at Charing and hissed up the long hill.” Near the top Drax orders his servant to cut the ropes on a lorry carrying rolls of newsprint as they overtake it, so that the rolls crash down on Bond’s Bentley coming up behind. *“There was a series of huge thuds as the left-hand rolls poured off the back of the lorry into the road and went hurtling off into the darkness. And more thuds as the right-hand rolls parted. One roll burst as it landed and Drax heard a tearing rattle as the unwinding paper crashed back down the one in*

eighty in third and he held it in the same gear to negotiate the hairpin at the top of the long gradient leading up to the Molash road... accelerating down the straight stretch of road past Chilham Castle ... Bond took the short cut out of Canterbury by the Old Dover Road and looked at his watch. It was six-thirty. Another fifteen minutes to Dover and then another ten minutes along the Deal road.”

Pett Bottom

Just south of Canterbury, best approached from the A2 at Bridge, lies one of the few clues to James Bond’s early upbringing, recounted in his Times obituary in **You Only Live Twice**. He *“came under the guardianship of an aunt, since deceased, Miss Charmian Bond, and went to live with her at the quaintly named hamlet of Pett Bottom near Canterbury in Kent.*



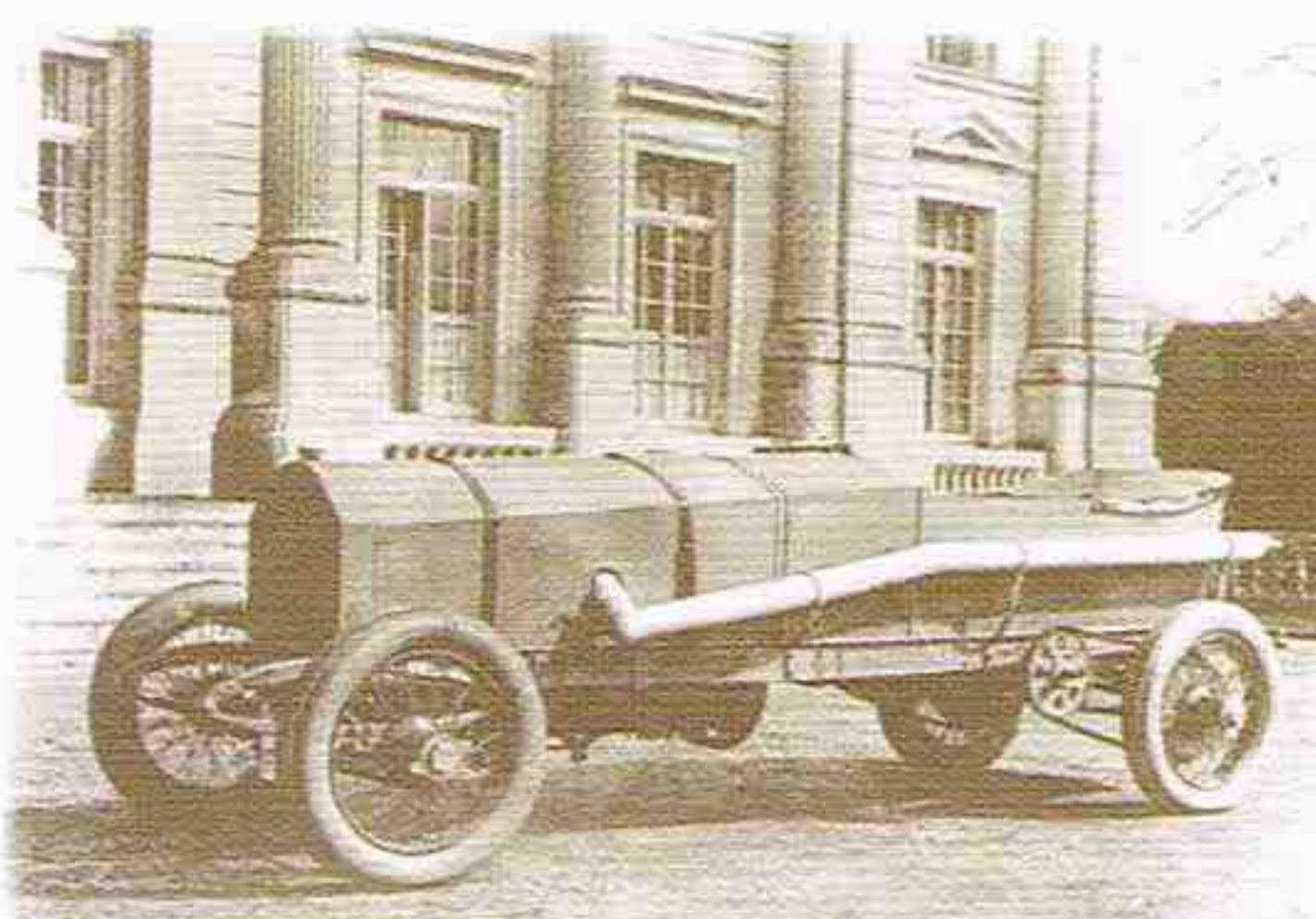
The Duck Inn

There, in a small cottage hard by the attractive Duck Inn, his aunt, who must have been a most erudite and accomplished lady, completed his

education for an English public school...”. The Duck Inn was one of Ian Fleming’s favourite pubs and can be identified, as well as the aunt’s cottage, now part of the pub.

Higham Park

Just off the A20 east of Bridge is Higham Park, home of the cars on which another Ian Fleming creation, **Chitty Chitty Bang Bang**, was based. There were three such



cars, still legendary in East Kent in the 1950’s when Ian Fleming was writing. Count Louis Zborowski inherited Higham Park and was

Leeds Castle

place on the A20 between Leeds Castle and Charing –

“The Mercedes was a beautiful thing... It was a type 300S, the sports model with a disappearing hood”. They were unexpectedly joined by a supercharged straight-eight red Alfa Romeo, which Drax edged off the road to crash and kill its young driver.



The Duck Inn

attractive Duck Inn, his aunt, who must have been a most erudite and accomplished lady, completed his

education for an English public school...”. The Duck Inn was one of Ian Fleming’s favourite pubs and can be identified, as well as the aunt’s cottage, now part of the pub.

Charing Hill

“Drax took the left-hand fork at Charing and hissed up the long hill.” Near the top Drax orders his servant to cut the ropes on a lorry carrying rolls of newsprint as they overtake it, so that the rolls crash down on Bond’s Bentley coming up behind. *“There was a series of huge thuds as the left-hand rolls poured off the back of the lorry into the road and went hurtling off into the darkness. And more thuds as the right-hand rolls parted. One roll burst as it landed and Drax heard a tearing rattle as the unwinding paper crashed back down the one in ten gradient....”*

Then Drax *“settled himself back to enjoy the part of the drive he had always liked best, the spring woods full of bluebells and celandines on the way to Chilham.”*

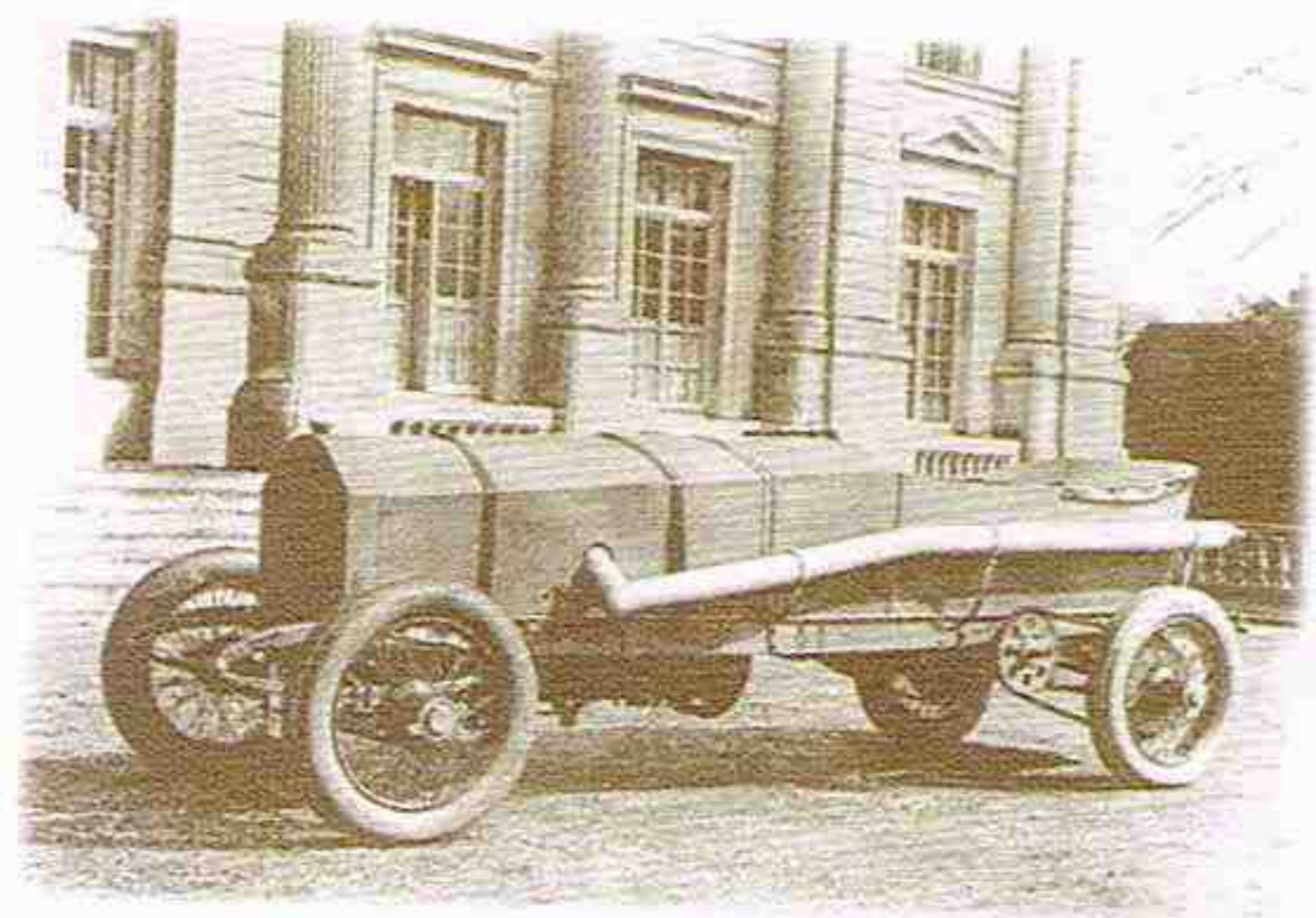


Chilham / Canterbury

These extracts from **Moonraker** echo Ian Fleming’s own favourite spots on the way to St. Margaret’s. *“Bond did a racing change and swung the big car left at the Charing Fork, preferring the clear road by Chilham and Canterbury. The car howled up to*

Higham Park

Just off the A20 east of Bridge is Higham Park, home of the cars on which another Ian Fleming creation, **Chitty Chitty Bang Bang**, was based. There were three such



cars, still legendary in East Kent in the 1950’s when Ian Fleming was writing. Count Louis Zborowski inherited Higham Park and was a motor-racing fanatic

who fitted aeroplane engines to automobile chassis, testing these monsters down the A2. Chitty Chitty Bang Bang II had a 18, 882 cc Mercedes Benz aero engine. After Count Zborowski was killed at Monza in 1924 the car was owned locally and kept near St. Margaret’s.

The Count also had a private light railway to bring his guests from Bekesbourne station to Higham and two 15 inch gauge 4-6-2 pacific locomotives based on the ‘Flying Scotsman’ type were sold after his death to the owner of the Romney, Hythe and Dymchurch Light Railway.

Between 1960 and 1962 Ian Fleming owned the Old Palace at Bekesbourne, just north of Higham Park, which he used for long weekends of golf with his wife Ann and son Caspar.