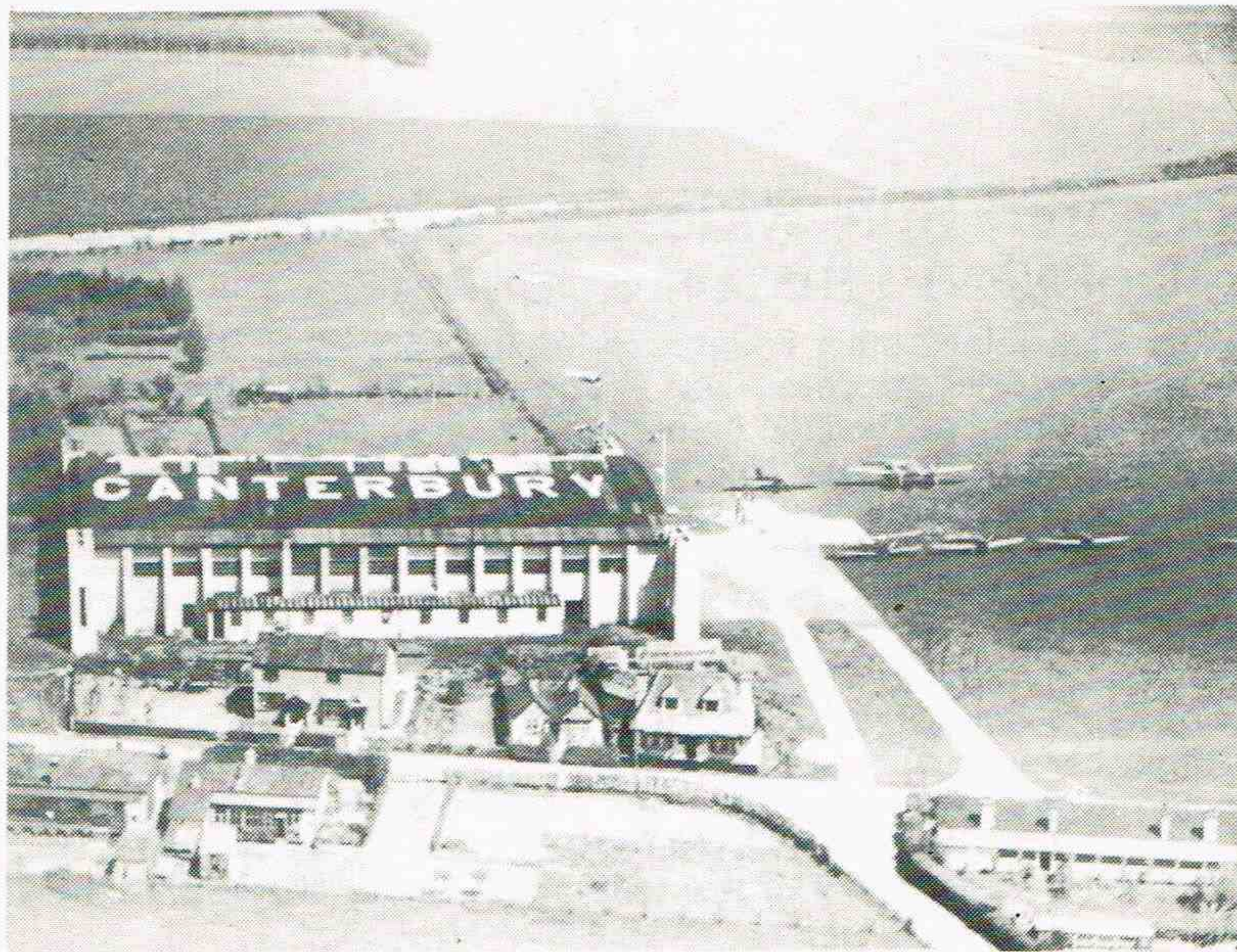


Aerial History



The above photograph was lent to Bokesbourne Church during the Flower Festival, to add to the display on the aerodrome. It shows the airfield as it was in the mid-1930s. There was clearly a brisk flying service to Bokesbourne, for the field was listed as 'Canterbury Aerodrome' in a Guide published about the same time as the photograph was taken. We are indebted to Mrs. Johnston of St. Mary's Road for the loan of the picture.

MANSFIELD COURT, BRIDGE

Oh to be in Bridge now that Mansfield's there!
 'Cos Mansfield means Retirement Homes — d'you know where?
 Turn down Riverside Close, you'll soon see —
 They're all in the Common Room drinking tea!
 The Warden's in the Roof Garden tending the flowers;
 There's an Alarm System working twenty-four hours.
 In Bridge everyone's friendly without being bold,
 There's a Super Store founded by that Yachtsman of old.
 With three Pubs, two Butchers and Hairdressers near,
 A Baker, Newsagent and Tea-house to cheer.
 Try a Cream Tea in the garden 'side the River Nail,
 Up the road a pleasant Postmaster looks after the Mail.
 So when your House and Garden get too much,
 Come and join us — so keep in touch!

Bill Trickett



Sponsored Bike Ride, Sat. 6th September, IN AID OF KENT'S HISTORIC CHURCHES

Last year Kent joined other counties in organising a sponsored bike ride in aid of our historic churches. The Friends of Kent Churches had never attempted anything of the kind before and no-one knew what to expect. Two things happened. Firstly, the truly staggering sum of £44,000 was raised by the ride. Secondly, and almost equally impressive to everyone who took part, was the feeling of companionship and involvement which all shared. It was such a success and enjoyed by so many people that it is to become an annual event.

If you cycled last year you will be aware of the need to help to preserve the fabric of Kent's many lovely churches and chapels. Often, the tiny congregations simply cannot maintain these buildings unaided. The Bike Ride appeals to young and old, to people of any denomination or of none, to everybody, in fact, who enjoys physical exercise especially in good company and in beautiful countryside, and who wishes to maintain our architectural heritage intact.

This is how the scheme works: cyclists (or walkers) find people to sponsor them. On September 6th they set out to visit as many churches as they can between 10am and 6pm. Half the money raised goes to the Friends of Kent Churches, who are bearing the expenses and organising the scheme, and half goes to any church or chapel nominated by the individual cyclist or walker. Participants can choose any route they like, making it as long or short as they wish. All the neighbouring counties are also taking part — so county boundaries can be ignored.

Cyclists, sponsors, people to man the churches and provide refreshments for weary participants are all needed. Please join in and help to make Bike Day 1986 even more successful than it was last year.

Further information and sponsor forms from the Parish Organisers:—

- Gill Harvey, 6 Bridgeford Way, Bridge (830494)
- Ann King, 8 Riverside Close, Bridge (830028)
- Sue Pratt, The Old Vicarage, Patrixbourne (830258)
- Christine Ash, Parsonage Farm, Bekesbourne (830214).

Bridge Parish Council

The Parish Council met on the 17th July when first matters discussed revolved around the **Recreation Ground**. It was decided to arrange for the Kent County Council to cut the perimeter of the ground and the other parts which their gang mower cannot reach as these areas, despite treat-

ment with weed killer at the end of April, were very overgrown and untidy. The condition of the two strips of land lying to either side of the bridge between the Nailbourne stream and the footpath in Patrixbourne Road was brought to the attention of the Council by a resident, and they agreed to get quotations for cleaning up the