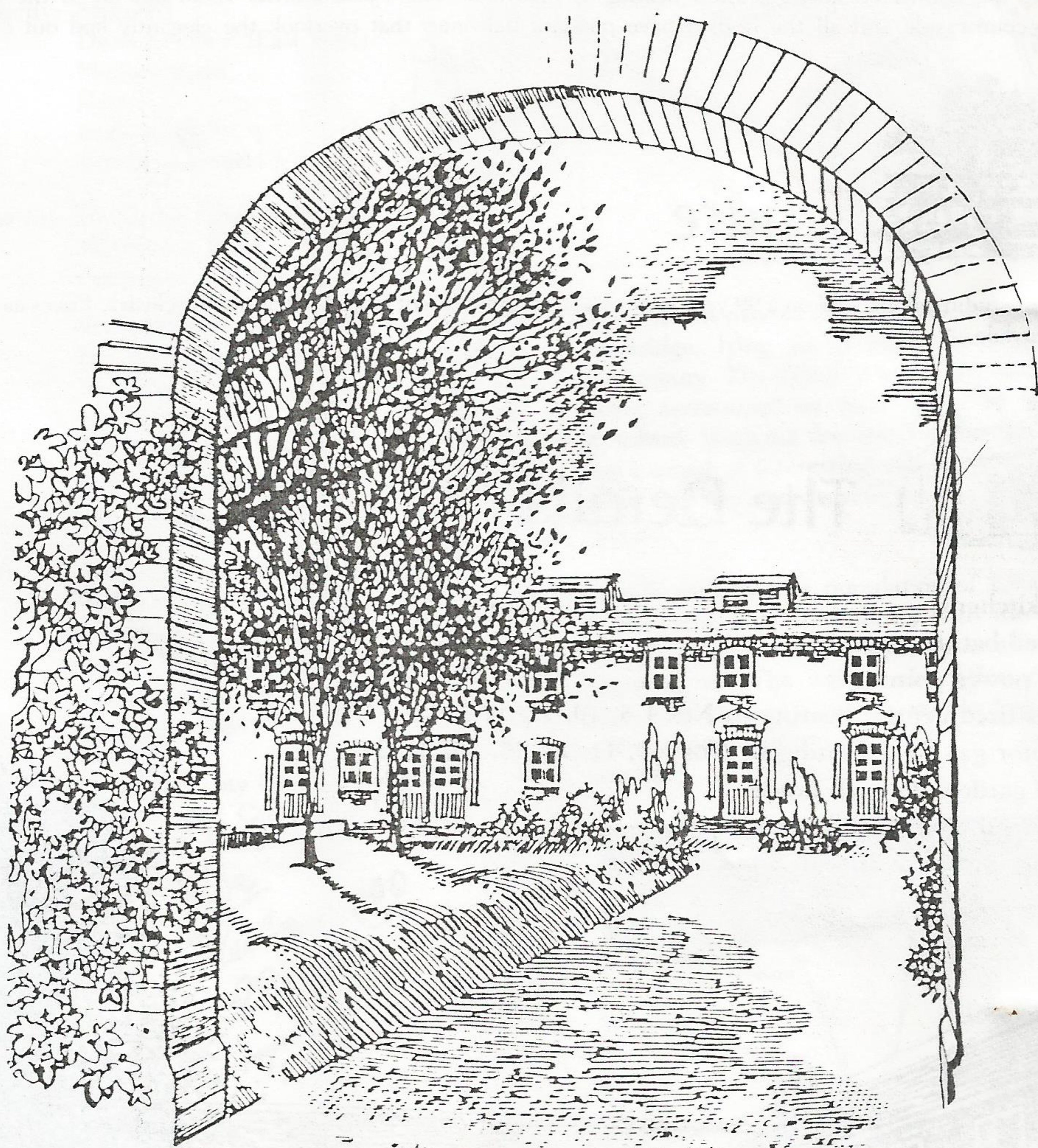


Development by **wph** First Rung Housing Association Ltd.

The Close, Bridge



Period Courtyard Development,
Providing Village Homes in The Heart of Kent.



Geering & Colyer

A Black Horse Agency

81, Castle Street, Canterbury, Kent. Tel: (0227) 57253

Development by **wpht** First Rung Housing Association Ltd.

The Close, Bridge

wpht

First Rung Housing Association

Founded in 1969, the WPHT Housing Association was formed to provide rented housing for those unable to secure suitable accommodation through other means. It is registered with the government's Housing Corporation and is managed by a system of voluntary Regional Committees. The First Rung Housing Association is a subsidiary association which handles actual home ownership, and uses public finance to renovate and put to good use property that would otherwise have stood empty. This is what has happened to The Close.

Management of the Close

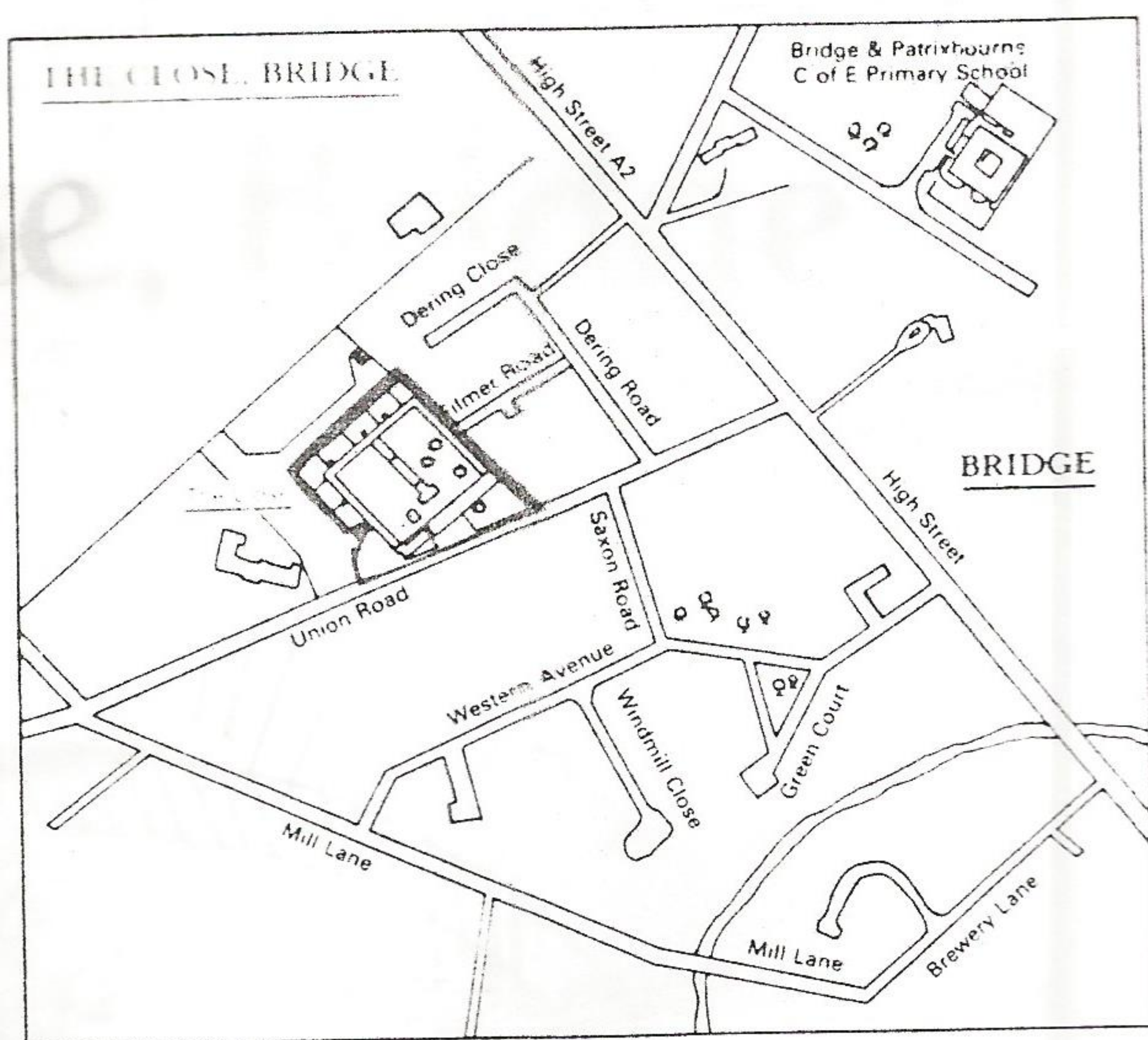
Residents will become the shareholders and members of a management company, at a purely nominal cost. This company will, for the first five years, employ WPHT to be responsible for the external affairs, insurance of the buildings, and other such matters. After five years, the residents will be free to decide to retain the services of WPHT in those matters, or seek an alternative means of organising them.



Geering & Colyer
A Black Horse Agency

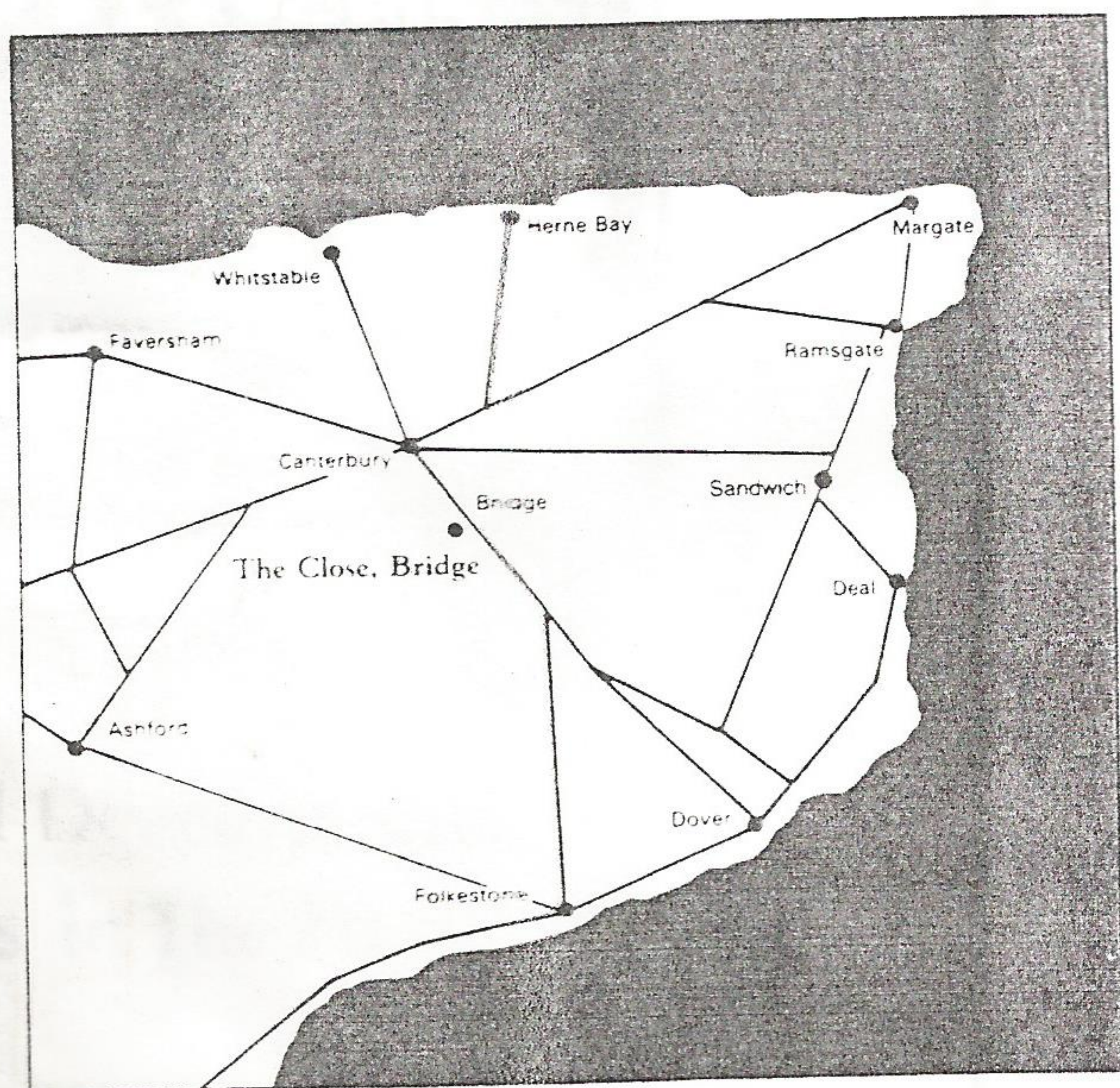
81, Castle Street, Canterbury, Kent. Tel: (0227) 57253

The Village of Bridge



The Close is near to the centre of the delightful Kentish village of Bridge, lying three miles from the Cathedral City of Canterbury. The village is set in the midst of farming country, being surrounded by fruit orchards, hop fields, and arable farmland. Within a few miles of Bridge, the Kent countryside has a wealth of interesting villages, and the south coast with its cliffs, beaches and seaside resorts, beckons from just a little further.

Bridge itself, with a population of 2,400, combines the quiet charm of a rural community with the advantage of a larger village. There are local shops, a post office, chemist and a small supermarket. The village also offers churches, pubs and a travelling library. It has an excellent junior school, and buses carry older children to and from surrounding secondary schools.



Bridge, however, is by no means cut off from the outside world if you wish to contact it! There is a frequent bus service to Canterbury from which London is easily accessible, and the main A2 road connecting London and Dover passes within one mile.



The Development

The original building that forms The Close was erected in 1835 (the nineteenth century) as retirement homes for the elderly and it is easy to see how well suited it is to such a purpose. Set away from the village centre, the building is a quadrangle of terraced houses, around a spacious courtyard, entered by means of an elegant archway. Constructed in red brick in the late Georgian style, the two-storey building gives a sense of privacy and quiet relaxation on the inside, while on the outside looking out at the beautiful Kent countryside.

Taken on and tastefully modernised by WPHT, The Close retains its secluded atmosphere but at the same time the individual nature of all of the houses gives each of them an independent identity.

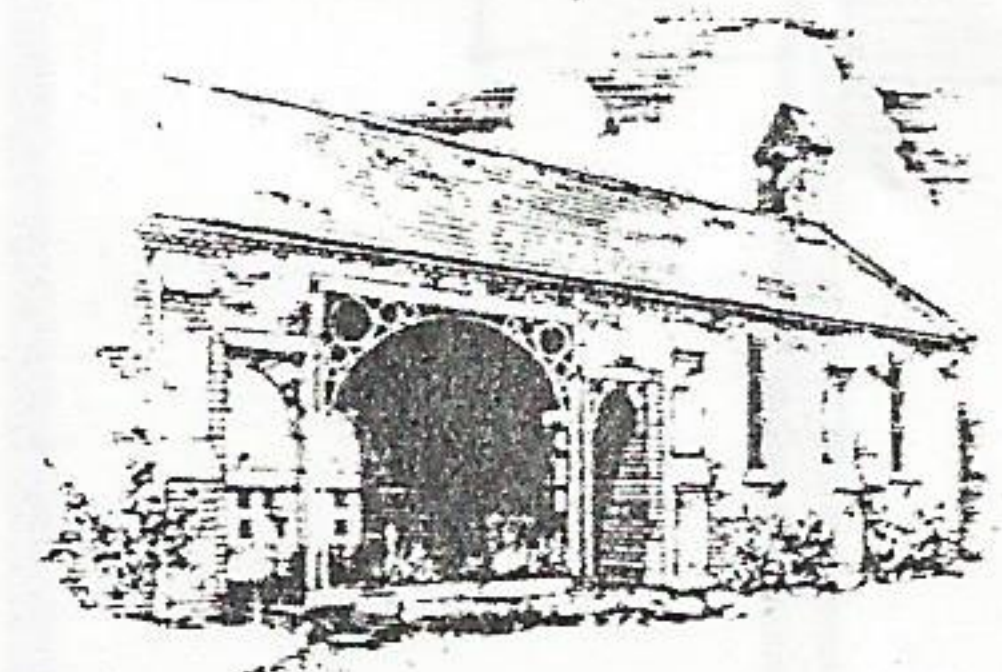
There are twenty four houses in The Close. They are two storeyed terraced properties, facing into the courtyard, being a mixture of one, two and three-bedroomed units. In the centre of the courtyard, the old chapel building has been converted into two interesting studio apartments.

All the homes offer everything required by comfortable, modern standards and yet each has its own distinctive tone. All main services are connected and gas fired heating is provided. The Close affords views out on to the beautiful surrounding countryside and all the houses have pleasant balconies that overlook the elegantly laid out courtyard gardens.



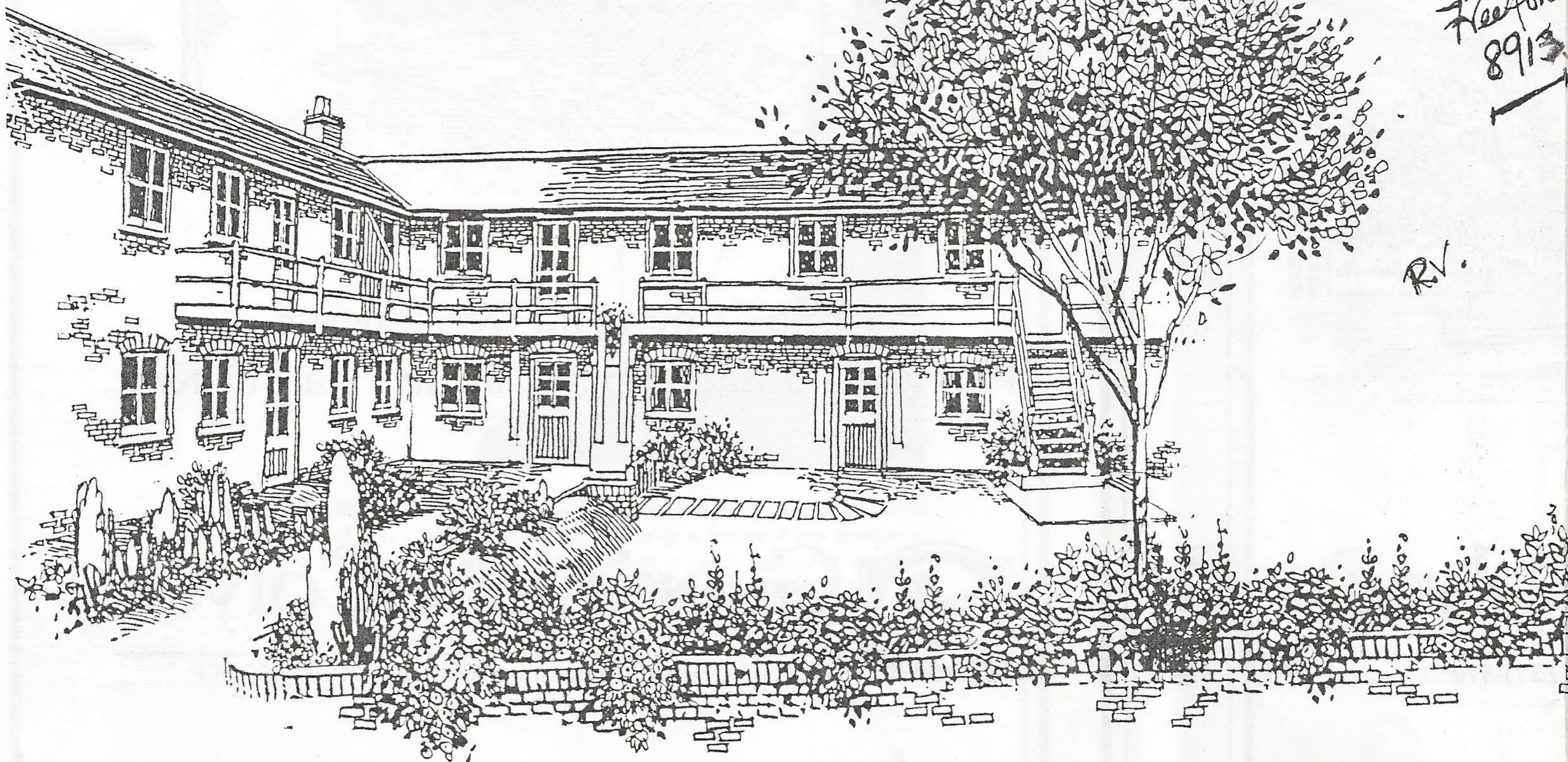
Tenure

Each house or studio will be sold on a 99 year lease at a fixed ground rent of £50 per annum exclusive. Prices as listed on attached schedule.



The Details

- Fitted kitchens
- Coloured bathroom units
- Ample power points
- Full gas fired central heating to Nos 1-5, 10, 12, 17-25
- Convector gas fired heating to Nos 6-9, 11, 14, 15, 16, 26, 27
- Private gardens to each house
- Landscaped communal gardens
- One parking space allocated to each unit



Authorities & Services

Transport: Buses: East Kent Bus Co
Enquiries: Travel Centre
Canterbury 463

Rail: Canterbury (East Kent)
Ticket Office 63
Regular service to Dover and Cannon Street
Canterbury (West Kent)
Ticket Office 62
Regular service to Maidstone and Charing Cross

Air: Gatwick Airport

Electricity: Seeboard
District Office, (East Kent)
Military Road,
Hythe,
Kent ~~0303~~ 0803
Tel: Hythe 60011

Education: Divisional Education Office
78 London Road
Canterbury Tel: 6672

Gas: South Eastern Gas
Boundary Road
Ramsgate
Kent CT11 7ND
Tel: ~~71475~~ 595588
Canterbury Showroom:
23, High Street

Water: Southern Water Authority
Westwood Road
Broadstairs ~~0845~~ 0845
Kent Tel: Thanet 681
Customer Information Service
Canterbury 56841
0227

Council: Canterbury City Council
Military Road Canterbury
Canterbury 51755
0227

Phone
Freefone
8913

R.V.