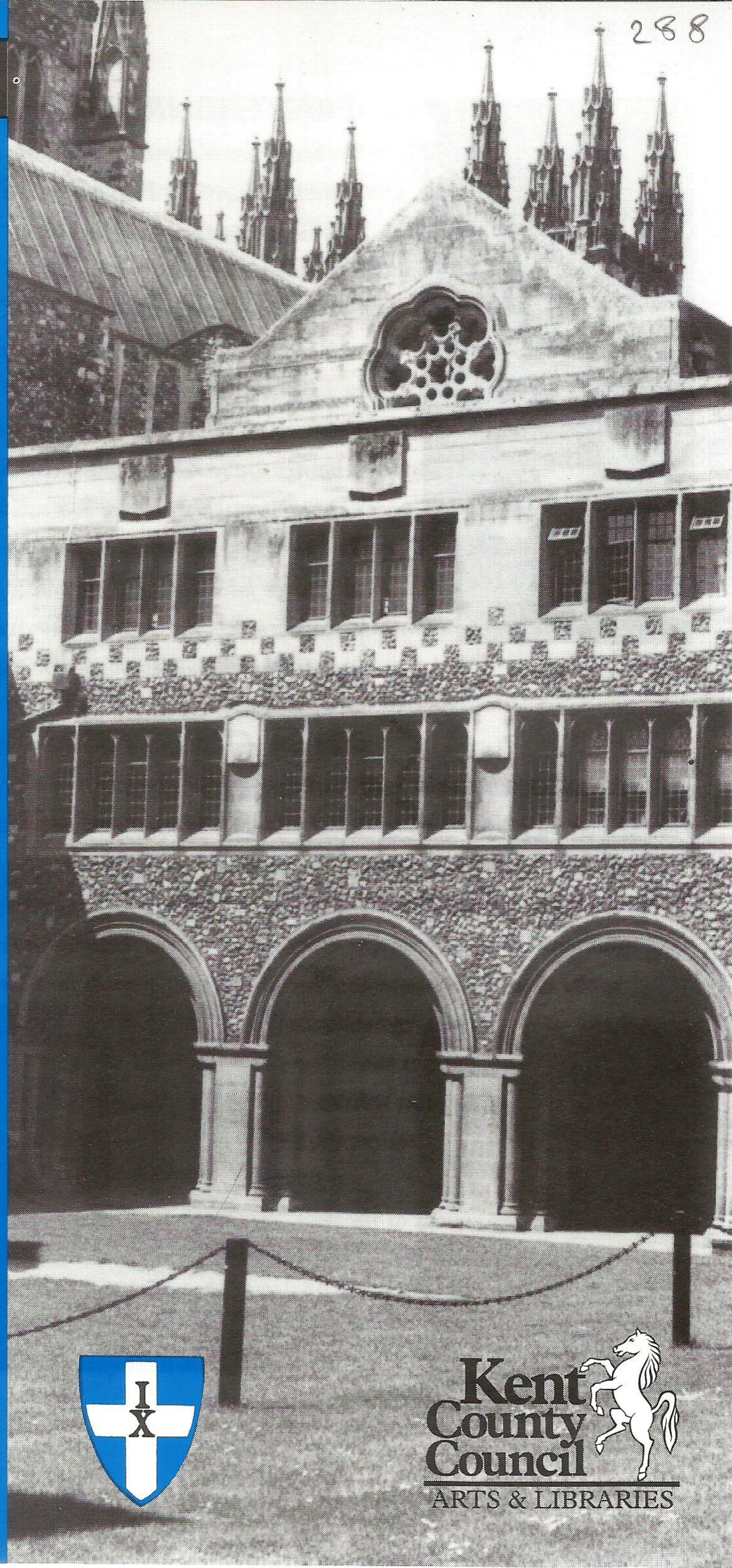


HERITAGE SERVICES GUIDE

# HERITAGE GREAT ARCHIVES

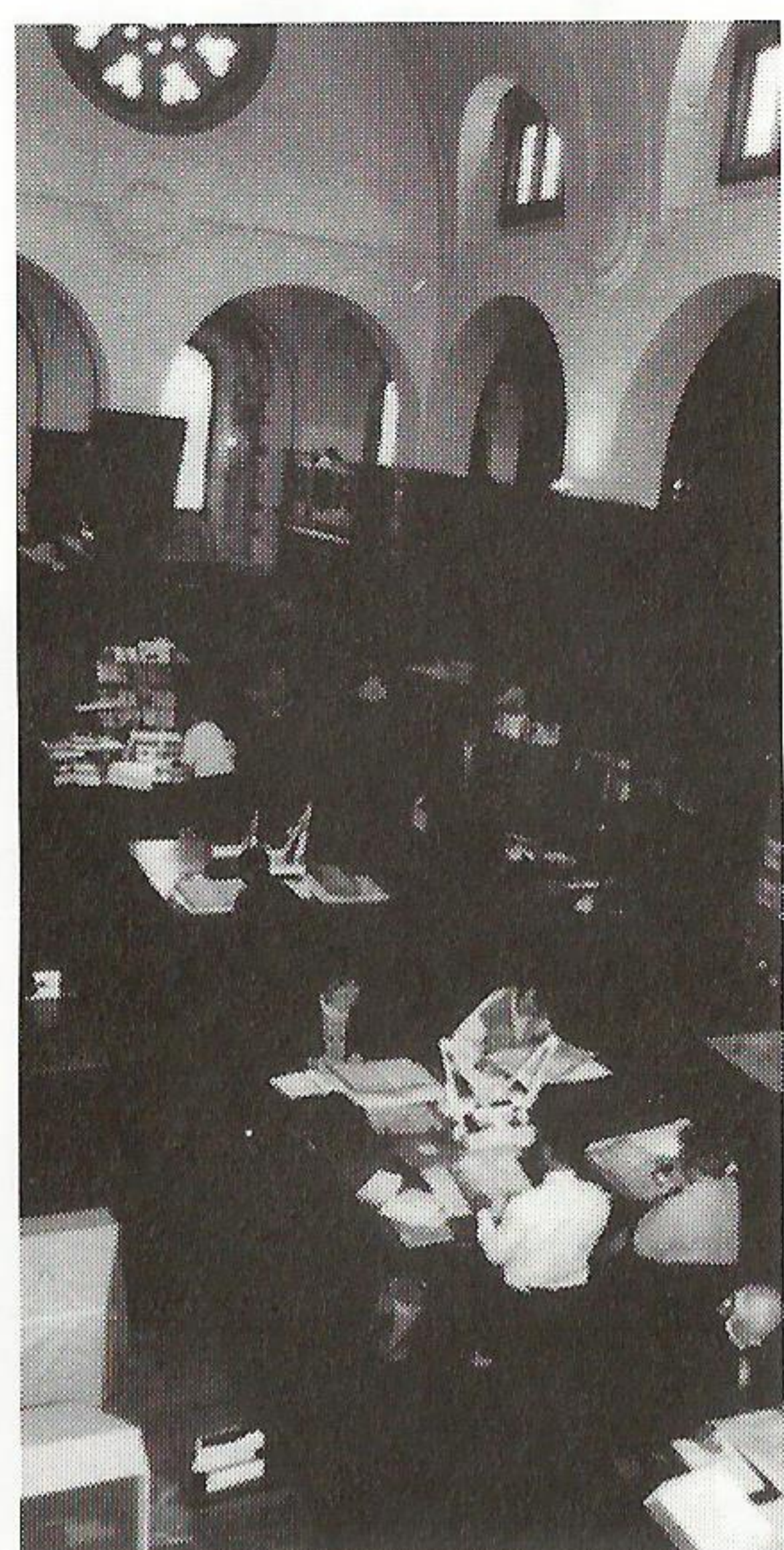
## CANTERBURY CATHEDRAL ARCHIVES



**Kent  
County  
Council**  
ARTS & LIBRARIES







## CANTERBURY CATHEDRAL ARCHIVES

*"In books lies the soul of the whole Past Time; the articulate audible voice of the Past, when the body and material substance of it has altogether vanished like a dream." Thomas Carlyle*

The material held in Canterbury Cathedral Archives provides a rich resource for those local and family historians whose researches bring them to the city of Canterbury and the East Kent region. The core of the archive is formed by the administrative records of the cathedral, city and diocese of Canterbury. The service is provided by the Dean and Chapter of Canterbury in partnership with Kent County Council. There is no charge for access to the records. This leaflet is a very general introduction to the available sources. Archives staff are on hand in the office to help with specific enquiries.

## THE COLLECTIONS

### Sources for researching family history include:

- Church of England parish registers for parishes in the archdeaconry of Canterbury for the 16th-20th centuries.
- Bishops' Transcripts of registers from parishes in the diocese of Canterbury for the 16th-20th centuries.
- Marriage licence records for Canterbury diocese, 17th-19th centuries. There are printed indexes to these records.
- The 1988 International Genealogical Index for Kent & Sussex and several local directories are available on microfiche.
- Census microfilm for Canterbury registration district 1851-1891.

### Other material which may be useful for genealogists:-

- Registers of Canterbury freemen (indexed) 1753-1883.
- Register of Canterbury apprentices 1765-1835.

## GENEALOGICAL INFORMATION

## HISTORY OF BUILDINGS

- Registers of electors 1832-1833, 1895-1915, 1945-1991.
- Records of Canterbury diocesan clergy, 1564-1900.
- Diocesan and Archdeaconry church court records, especially deposition books.
- Manorial court rolls and books.
- School records, 19th and 20th centuries.
- Canterbury taxation records.

### Possible sources for tracing the history of a building include:-

- Maps and plans of Canterbury and other local areas 1580-1980.
- Canterbury City Council and Dean and Chapter lease books and title deeds, 12th-19th centuries.
- Church faculties and terriers, 17th-20th centuries.
- Family and estate collections.

## MAPS AND PLANS

A wide variety of maps and plans are held. Canterbury is very well covered, but other Kent areas are also represented. Tithe maps for the mid 19th century are held for parishes in the diocese of Canterbury, along with large scale Ordnance Survey maps for East Kent.

## PHOTOGRAPHS

There are over 1,000 photographs held in the archives, with Canterbury and the cathedral being very well represented.

### Below are listed some of the other classes of records held by the archives:-

## DEAN AND CHAPTER OF CANTERBURY Including records of:-

- Estates in Kent, Surrey, Essex, Suffolk, Norfolk, Oxfordshire, Buckinghamshire and Devon.





- *The cathedral and its properties in Canterbury and elsewhere in Kent.*
- *The clergy, monks and lay personnel of the cathedral.*
- *The running of the medieval province of Canterbury when there was no archbishop.*

**LOCAL GOVERNMENT** ● *City of Canterbury, 1155-1990.*

- *Fordwich borough records, 1259-1907.*
- *Parish council records, 1894-1991.*
- *Bridge Blean rural district council, 1933-1974.*
- *Herne Bay urban district council, 1877-1974.*
- *Whitstable urban district council, 1856-1974.*

**CHARITIES AND HOSPITALS**

**Including:-**

- *Maynard and Cotton's Hospital, 1599-1891.*
- *Nixon's charity, 1733-1860.*
- *Strensham's charity, 1584-1846.*
- *Ann Smith's charity, 1779-1930.*
- *St John's Hospital, 1358-1962.*
- *Eastbridge Hospital, 1150-1968.*
- *Jesus Hospital, 1599-1971.*

**CHURCH RECORDS**

- *Canterbury Archdeaconry records, 1200-1992.*
- *Canterbury Diocesan records, 1364-1985.*
- *Canterbury Congregational Church, 1645-1960.*
- *Canterbury Methodist Church, 1492-1860.*
- *Wingham Congregational Church, 1817-1958.*
- *Canterbury French Church, 1576-1836.*

**COLLECTIONS**

- *Bargrave collection of artefacts c 1660.*

**TRADE AND INDUSTRY**

- *Woollen Drapers and Tailors Company, 1545-1970.*
- *Maylam and Maylam, solicitors, 1665-1918.*
- *Holman Brothers, engineers, 1855-1969.*
- *Post Office Engineering Union, 1928-1938.*
- *Kingsford and Wightwick, solicitors, 1611-1934.*
- *Ash family brewery, 1857-1910.*

**SCHOOLS AND EDUCATION**

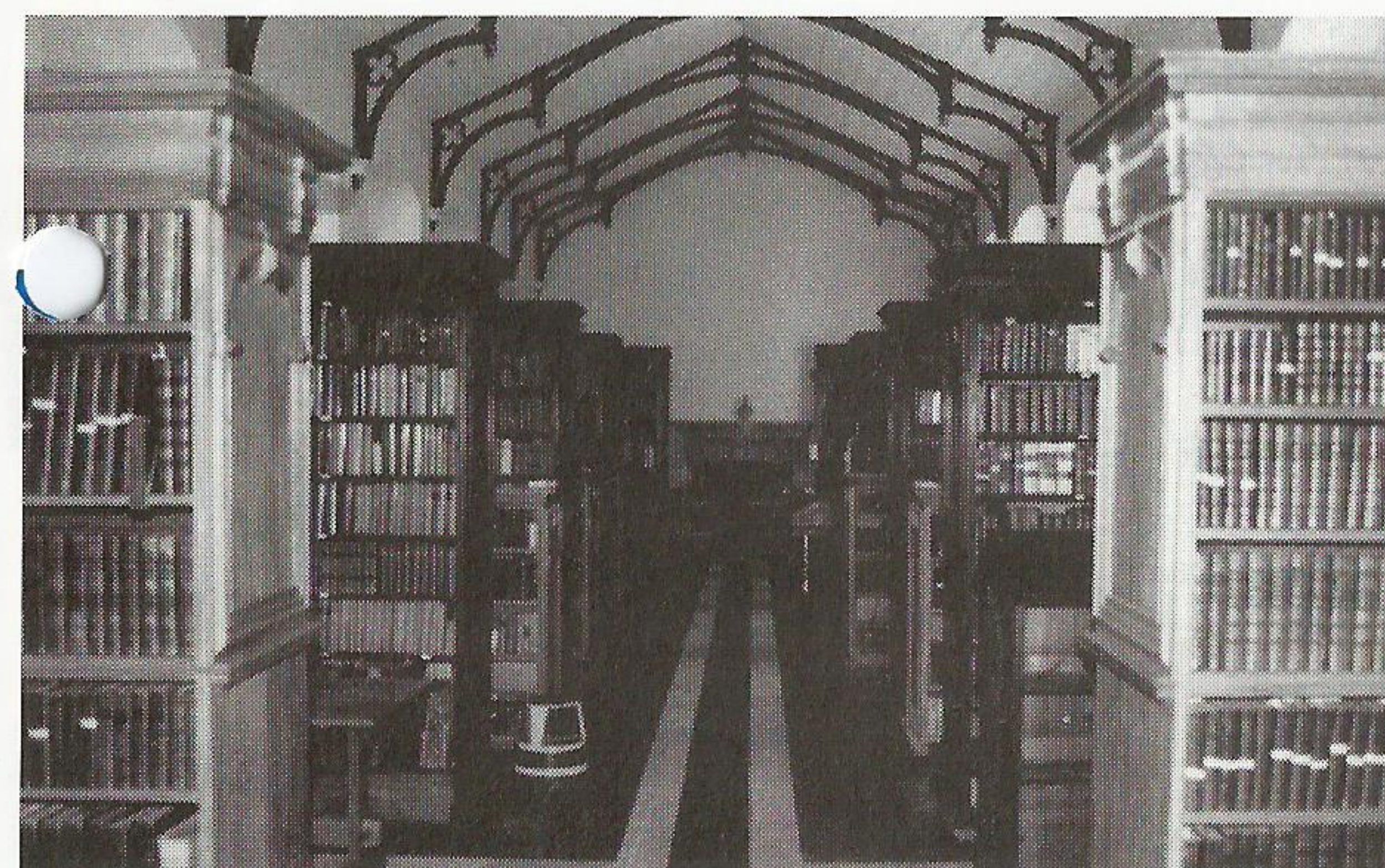
- *Parish schools in the Archdeaconry of Canterbury.*
- *Canterbury Cathedral Choir School, 1920-1970.*
- *Canterbury Diocesan Board of Education, 1838-1920.*
- *St Augustine's Missionary College, 1850-1980.*
- *Broad Street Schools, Canterbury, 1811-1932.*

**FAMILY AND ESTATE RECORDS**

- *Bridges family of Goodnestone Park, 1755-1886.*
- *Hales family, 1272-1876.*
- *Oxenden family of Barham, 1440-1867.*

**BOOKS AND PRINTED MATERIAL**

*The archive office has close links with Canterbury Cathedral Library which maintains, in addition to an important collection of rare books, a large group of national and local history books and pamphlets. These are available through catalogues in the archives searchroom and online searches by the library staff.*



*Dictionaries and books about genealogy and heraldry are also held, as well as almost all the major printed national sources for historians.*

*Access to the many old and rare books in the library's collection is by arrangement with the Cathedral Librarian (tel. 0227 458950).*



## NEWSPAPERS AND PERIODICALS

Bound volumes of the *Kentish Gazette* are held by the Cathedral Library for most of the years between 1830 and 1875.

Several journals of interest to researchers are taken, such as the *English Historical Review*, *Kent Family History Society Journal* and *Family History*. A complete set of *Archaeologia Cantiana* is available for consultation in the searchroom.

**More information about the collections held at Canterbury may be obtained from the archive office.**

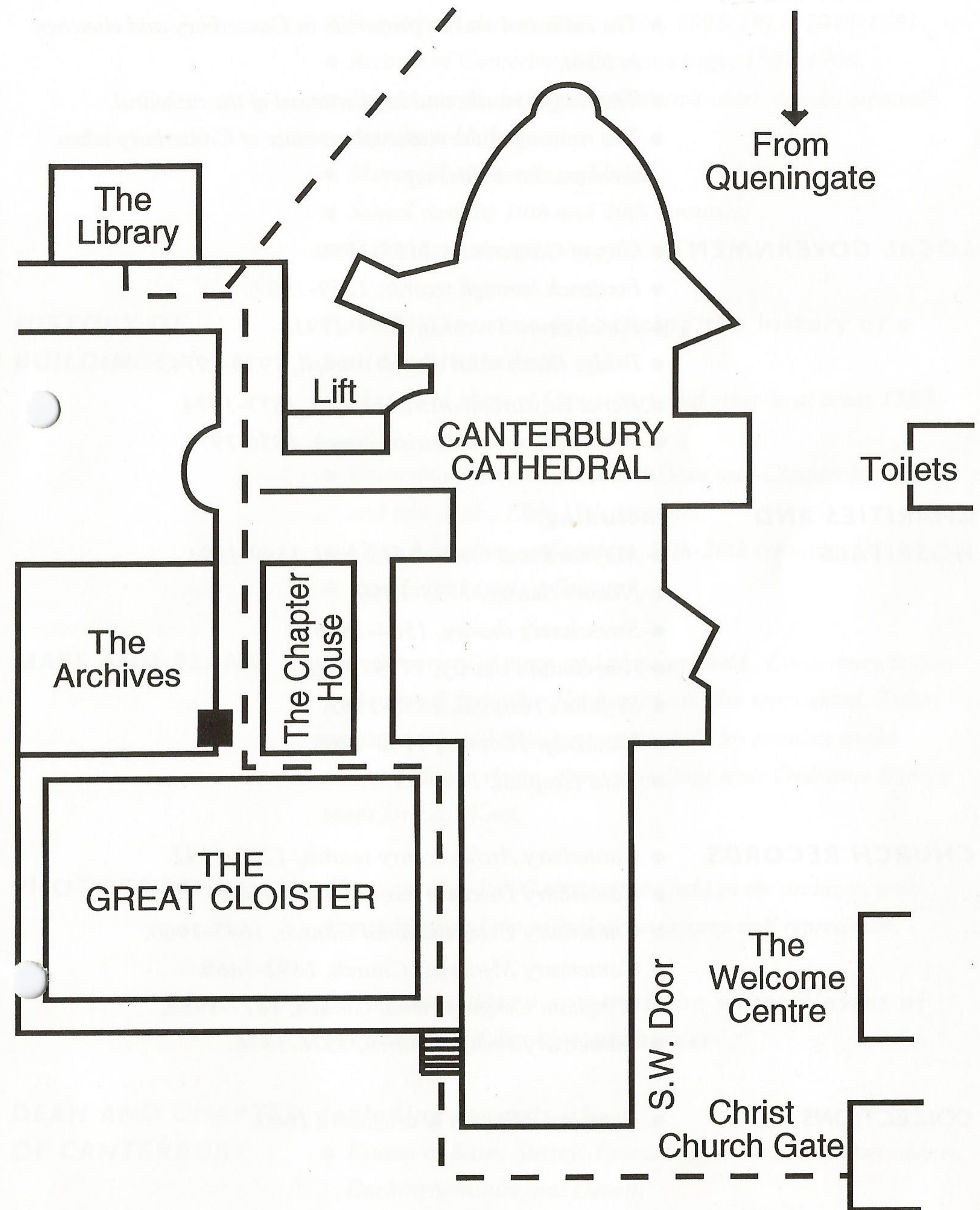
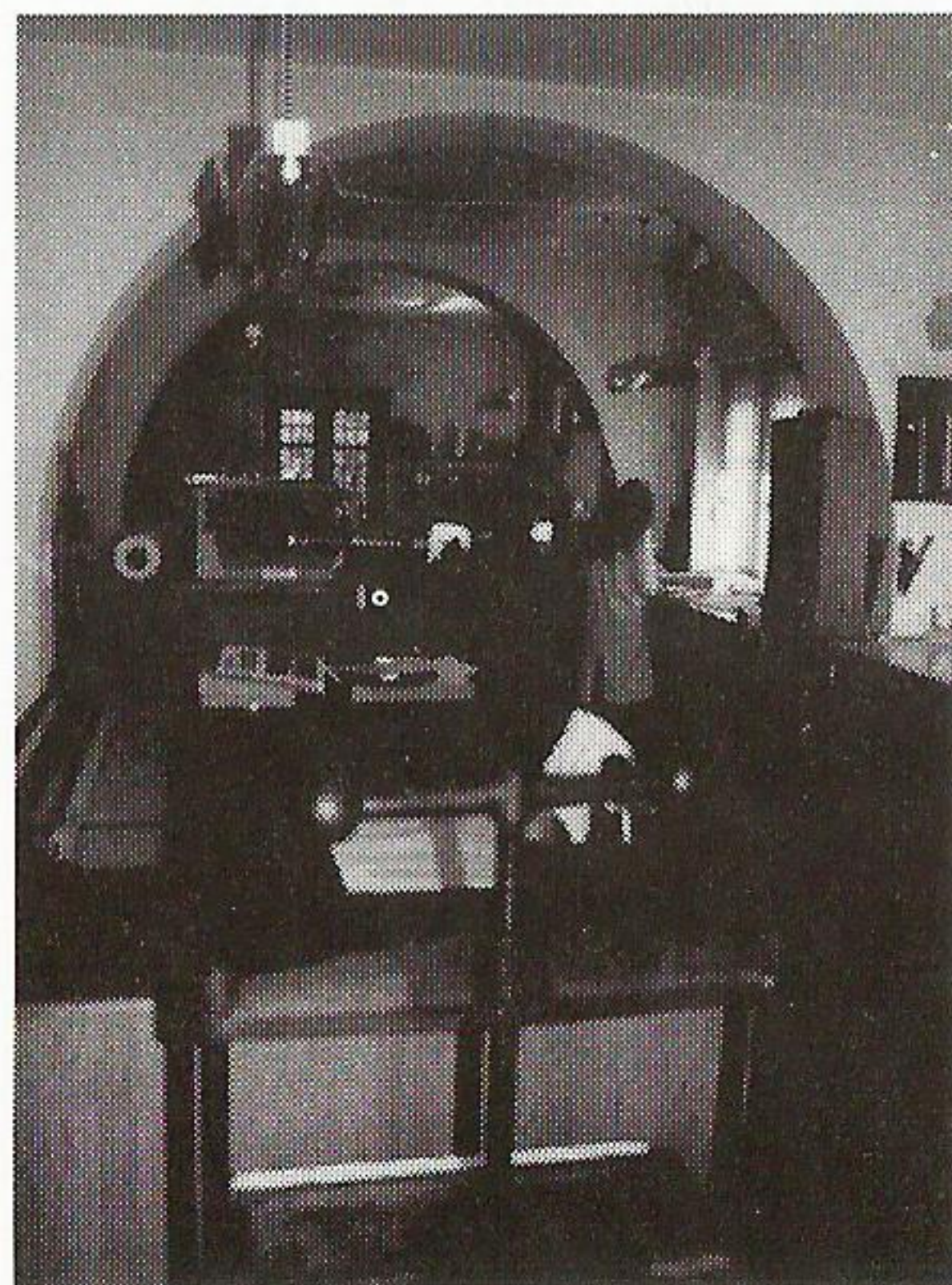
*It is advisable to reserve a document table or microfilm reader in advance to avoid disappointment.*

*The office participates in the County Archive Research Network scheme and access to the searchroom will be allowed on the production of a CARN reader's ticket. To obtain a CARN ticket please bring with you two passport sized photographs and some means of identification showing name, address and signature, eg a driving licence.*

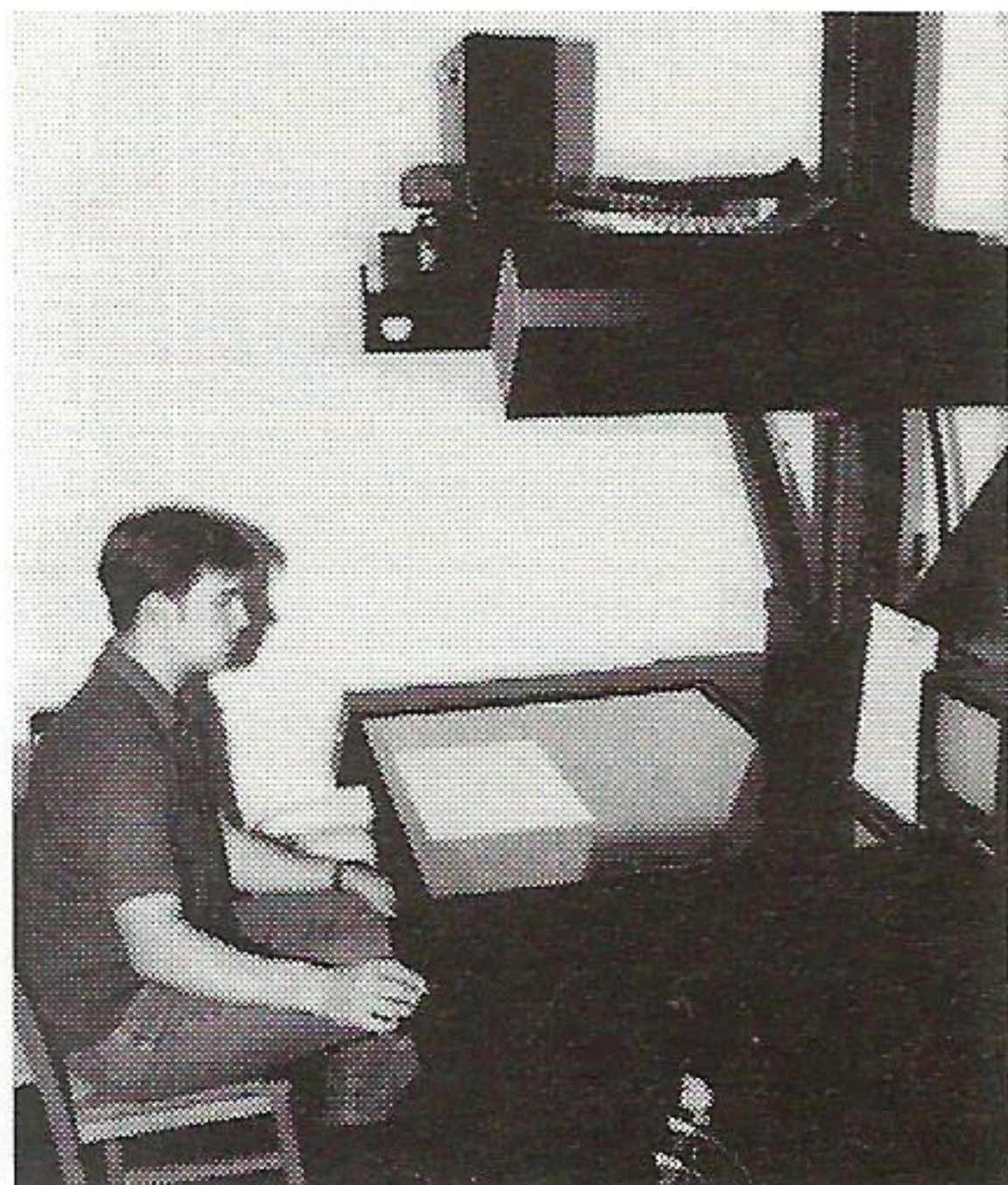
## PLANNING YOUR VISIT

## FACILITIES

- Public toilets (disabled toilets are available in the Cathedral Precincts).
- Lift available to the searchroom (advance warning required).
- Photocopying and microfilm print-out facilities.
- Photography and microfilming services are available.
- Members of the conservation department are happy to advise on matters relating to the care of books and documents.
- A professional genealogical research service is provided by the office for a fee.







- *Classes and group visits can be arranged by appointment on Fridays.*
- *Books and pamphlets about archives are on sale in the office.*
- *Parking for disabled readers (advance warning required).*
- *Archival quality storage boxes and packaging can be purchased.*
- *Documents accepted for deposit are computer catalogued, securely stored and made available for public research.*
- *Regular small exhibitions are on view in the searchroom and foyer.*

## OPENING HOURS

- *Monday* 9am-5pm
- *Tuesday* 9am-5pm
- *Wednesday* 9am-5pm
- *Thursday* 9am-5pm
- *Friday* Searchroom closed  
(Classes and group tours can be arranged)
- *Saturday 1st and 3rd of each month* 9am-1pm

*Please note that items are not produced from the strongrooms in the last hour of each session.*

## HOW TO FIND US

*Canterbury Cathedral Archives is situated on the north side of the cathedral, to the east of the Great Cloister. Canterbury East and West railway stations are within 15 minutes walking distance. The bus station is 5 minutes away. There are car parks and places to eat in the city.*

**CANTERBURY CATHEDRAL ARCHIVES  
THE PRECINCTS, CANTERBURY, KENT  
CT1 2EH**

**TEL:(0227) 463510**

**FAX:(0227) 762897  
(SPECIFY "ARCHIVES")**

