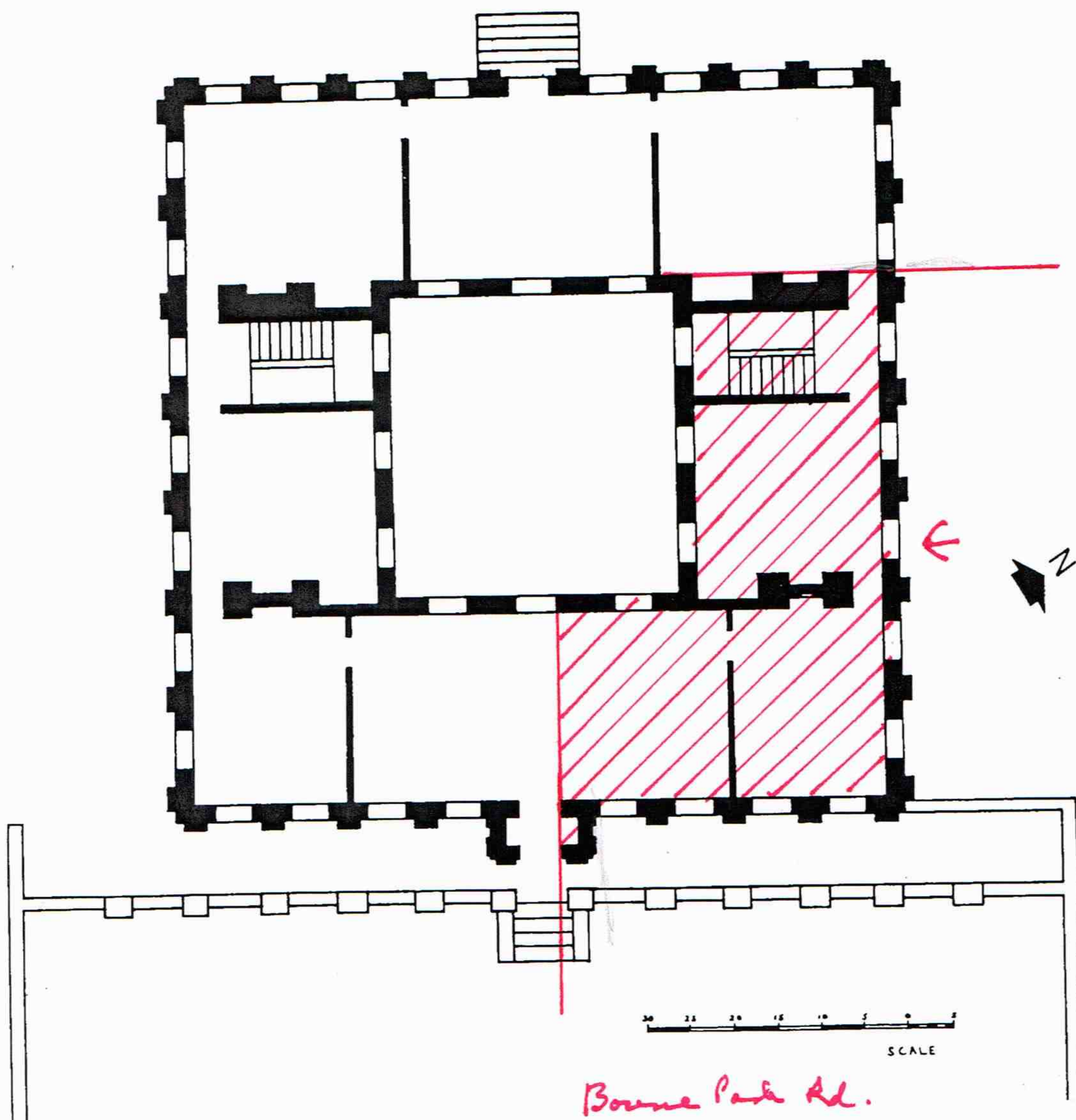


Notes and References

1. The Revd Edward Gr 23 August 1849. He Esq. His widow die by the Revd Albert C Hall, Willington, Sa (ex info. P. H. Blake
2. Edward Hasted's 'The Kent': Canterbury,
3. 'Complete Peerage'
4. Published in London
5. See note 2 above.
6. Reynold's 'Admissi
7. PCC 29 Morrison.
8. G. E. Aylmer's 'The
9. For an account of W National Biography Drake). His daughter was buried on 13 F will 1587 PCC 13 R tion of Kent 1619 at Society).
10. Her will was prove daughter of Robert The Mote, Canterb Wootton (1548-1620 William Partherich their father and gr Wootton (1492-1551
11. Sir Albertus Mort PCC 138 Bowyer)
12. J. B. Jones's 'Anna
13. William Partheric his will was prove Sir Anthony St. Le
14. See note 2 above. subject of an artic volume of 'Archae 100 acres) was th Joseph Huckstep ( and Bridge and of William Huxstep v Mercy Huxstep, i



BRIDGE PLACE. Photograph of a drawing of the ground floor plan of the house as originally built, based upon recent excavations (reduced). Since this drawing was made it would appear there might have been a fireplace immediately opposite the main entrance.

From BLACKHANSBURY, Vol 5