

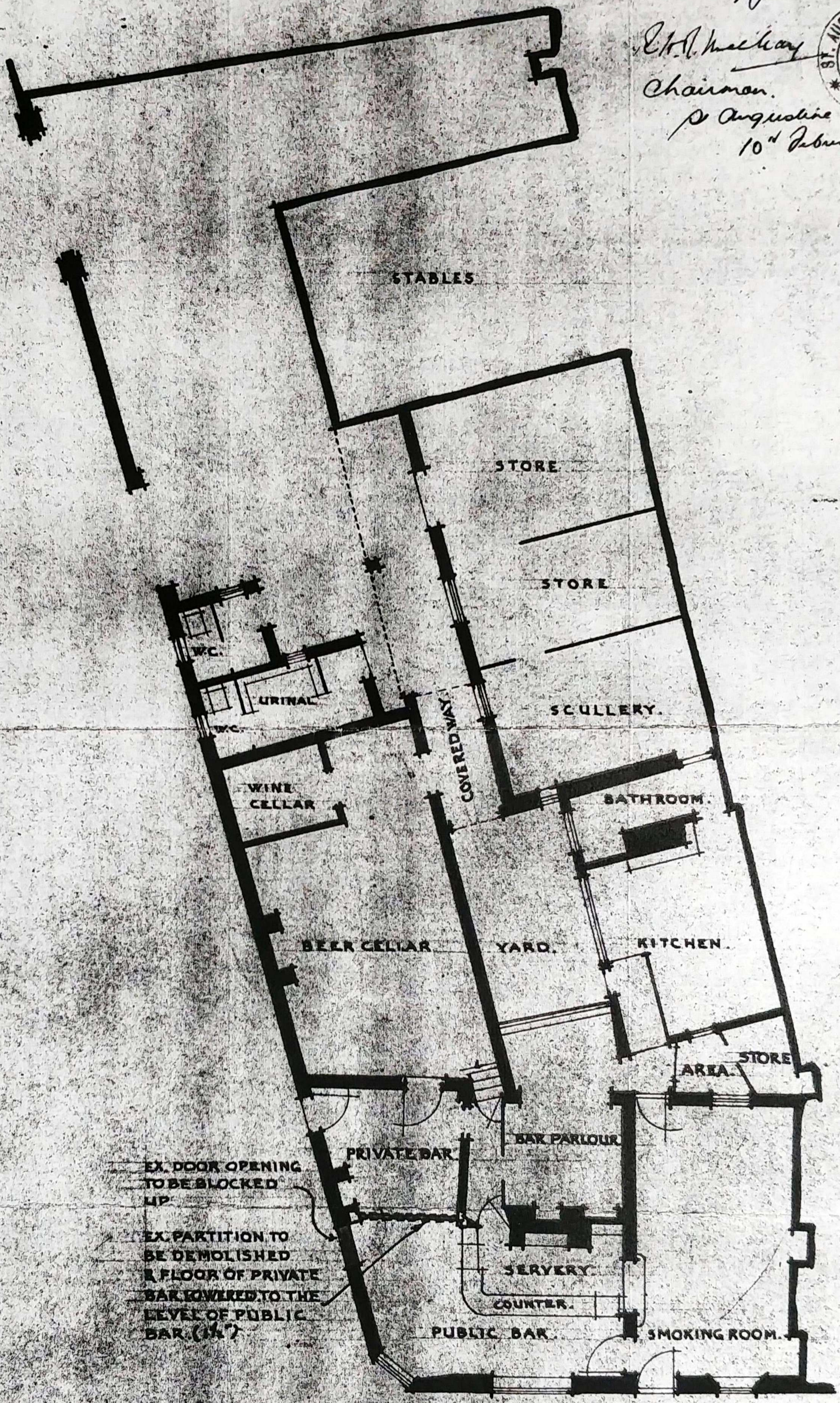
1947

Approved on behalf of
the Licensing Justice

E.H. Mackay

Chairman.

St Augustine Division
10th February 1947



GROUND FLOOR PLAN AS PROPOSED.

PROPOSED ALTERATIONS.
SCALE - 8 FT. TO ONE INCH.

THE PLOUGH & HARROW, BRIDGE

READ & McDERMOTT,
F.R.I.B.A. - A.M.I. MECH. E.,
ARCHITECTS
ROCHESTER MAIDSTONE

1931

234



EXISTING PLAN

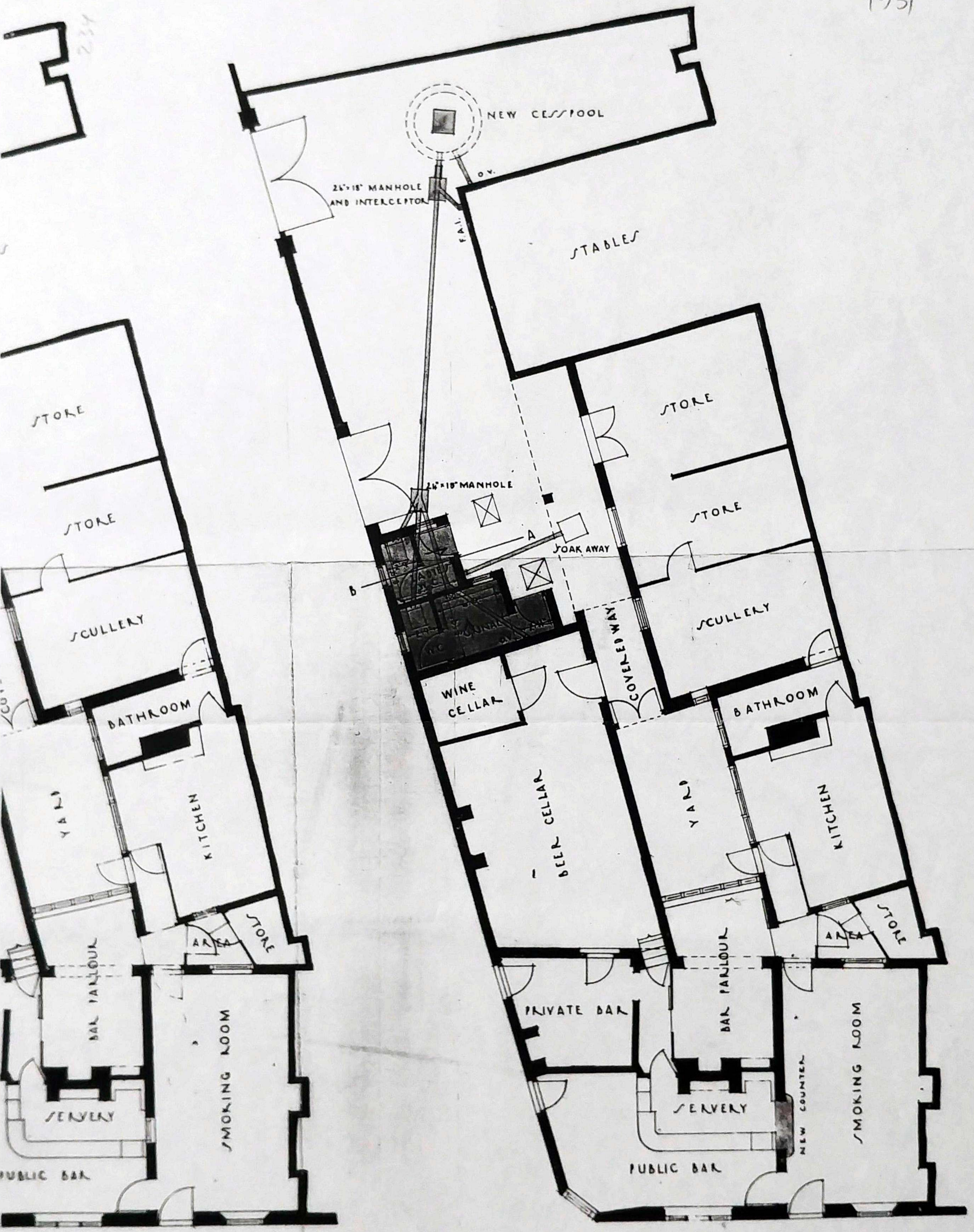
GROUND FLOOR PLAN

REF : NO :	139
DRG : NO :	1:3
DRN : BY	C.W.M.
TRAC : BY	C.W.M.
SCALE	1/8"

PROPOSED ALTERATIONS TO THE PLOUGH & H
FOR MESSRS SHEPHERD NEAME

31

234



EXISTING PLAN

PROPOSED ALTERATIONS

GROUND FLOOR PLAN

ALTERATIONS TO THE PLOUGH & HARROW, BRIDGE FOR MESSRS SHEPHERD NEAME LTD.

H. Anderson L.A.I.B.A.
 CHARTERED ARCHITECT
 CANTERBURY
 24TH JUNE 1931