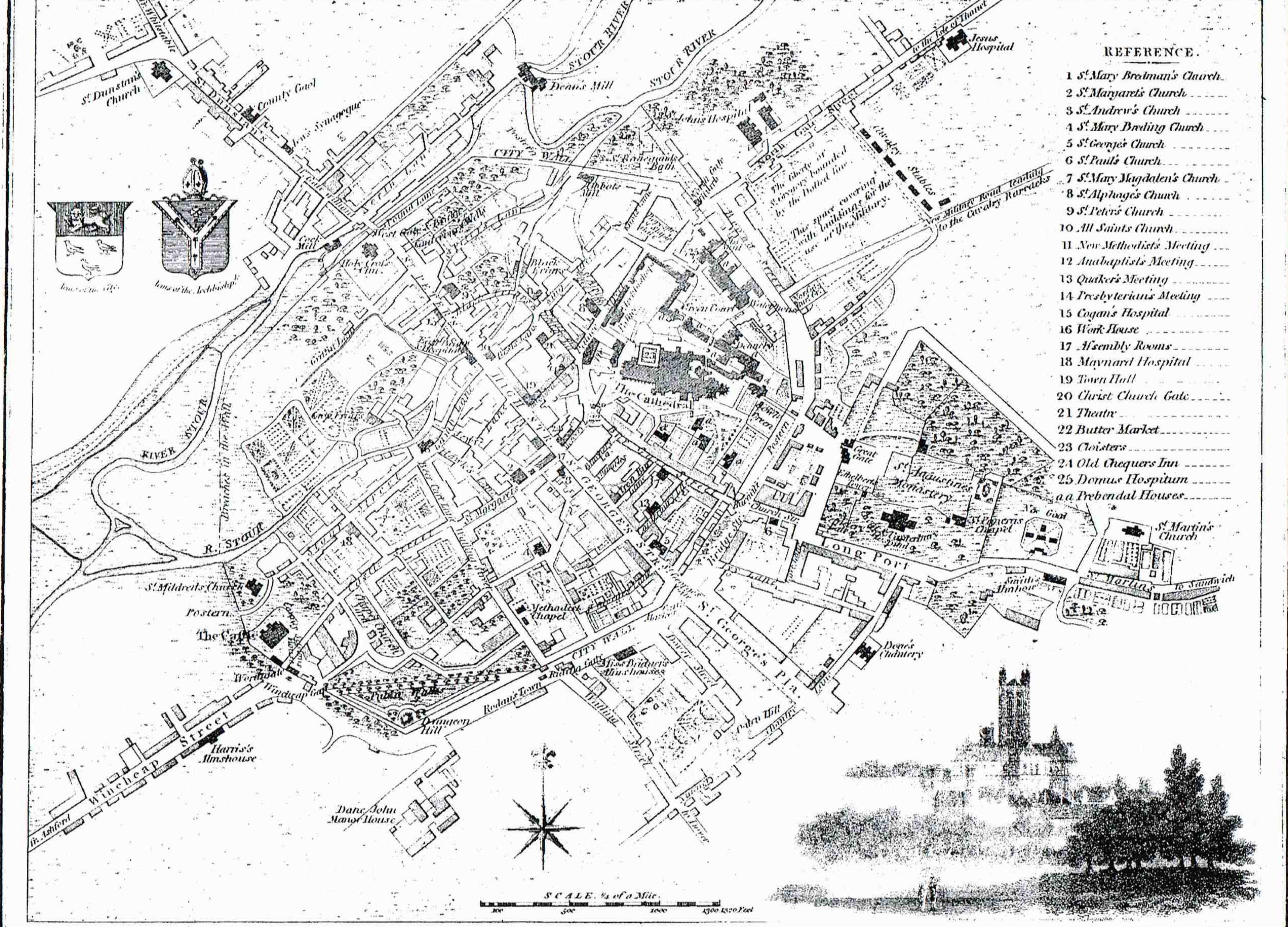


CANTERBURY



Engraved by J. Roper, from a Drawing by G. Col.

London: Published for the Proprietors, by Verner, Hood & Sharpe, Printers; Dec. 1st 1806.

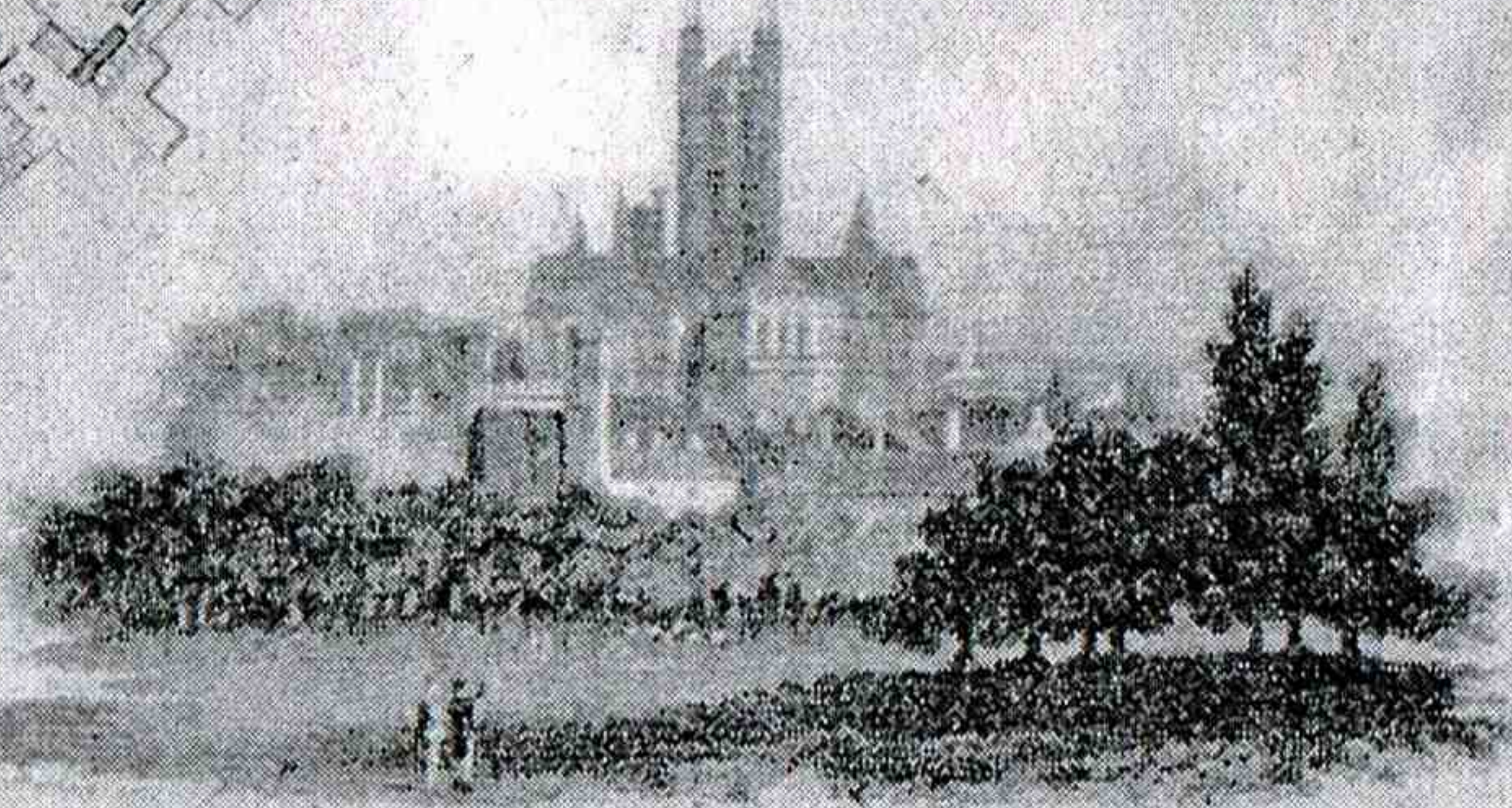
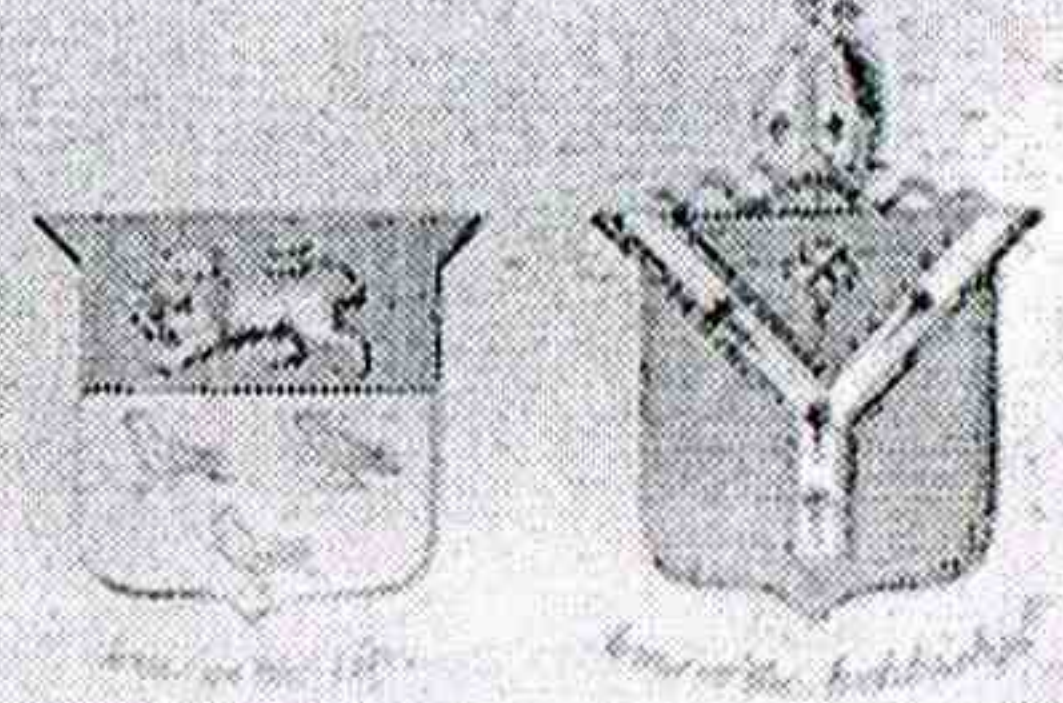
To accompany the Beauties of England & Wales

CANTERBURY



REFERENCE

- 1 St. Mary Brothman's Church
- 2 St. Margaret's Church
- 3 St. Andrew's Church
- 4 St. Mary Hasling Church
- 5 St. George's Church
- 6 St. Paul's Church
- 7 St. Mary Magdalen's Church
- 8 St. Raphael's Church
- 9 St. Peter's Church
- 10 All Saints Church
- 11 New Methodists Meeting
- 12 Unitarian Meeting
- 13 Quakers Meeting
- 14 Presbyterians Meeting
- 15 Legans Hospital
- 16 Work House
- 17 Assembly Rooms
- 18 Moyner's Hospital
- 19 Town Hall
- 20 Christ Church Gate
- 21 Theatre
- 22 Butter Market
- 23 Cloisters
- 24 Old Chequer Inn
- 25 Domus Hospitium
or Debarthel Houses



SCALE 7000 Yds.

Drawn and Engraved under the direction of E.H. Dingley.

Engraved by J. Roper, from a Drawing by G. G. G.

London, Published for the Proprietors, by Vernor, Hood & Sharpe, Paternoster Row, Dec. 27, 1841.

to accompany the Narrative of Emma & Paul