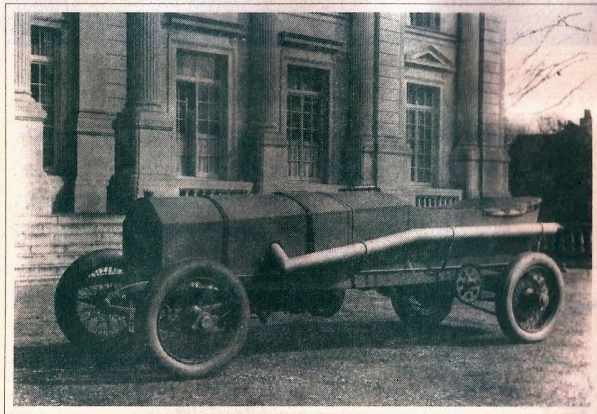


Higham is one of England's beautiful country homes. A house of major proportions, complete with its grand four-column neo-classical facade finished in Portland stone. The house's past can be traced back to Edward 11 (1320) and distinguished visitors include Mozart and Jane Austen. Higham has been home to the author and herbalist, Thomas Culpepper of Bedgebury (1534), a former Governor of the Bank of England, Sir Walter Whigham, The Countess Margaret Zborowski (nee Astor) and her son Count Louis Zborowski the creator of the famous series of 'Chitty-Bang-Bang' racing cars.



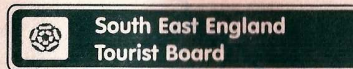
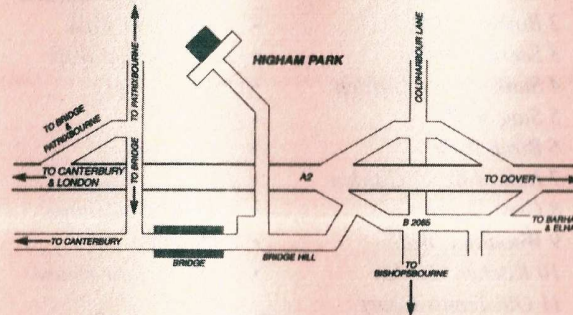
Chitty Bang Bang at Higham, 1921

Higham's parklands and water-gardens were laid out in their present form during the Edwardian period. Unfortunately, the original Plans for Higham have yet to resurface, leaving today's restorers the altogether more complicated task of discovering the 'genius' of the garden unaided.

Restoration of Higham Park began in the autumn of 1995. Years of neglect had robbed the gardens of their identity, charm and sophistication. Surveying firstly from the air, a draft plan of the existing layout simplified the selection of remaining plantings, identifying those for revitalising and pruning. This was followed by major clearing and rebuilding of walls, steps and paths and other hard elements, in so doing revealing the garden's original framework. The project is still very young; garden lovers, however, will possibly take greater pleasure from watching its evolution, over the coming years, as Higham's gardens again become fully reinstated.

Location

- Higham Park is located on the Kent Downs
- Approximately 1 hour from London
- On the A2 at Bridge 3mls SE of Canterbury
- Entrance at top of Bridge Hill
- Channel Ports, Dover 9mls



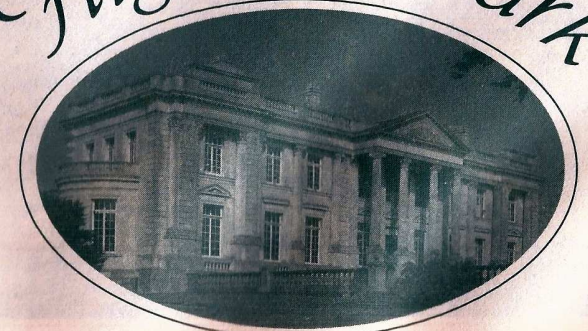
Events: For information contact the Estate Office on 01227 830830
 Easter Sunday Charity National Gardens Scheme
 May 1st - Mozart Summer Festival
 Aug 28th Canterbury Operatic Society Concert
 Dec 18th Canterbury Operatic Society - Christmas Concert

Open: 21st March - 30th September
 Sun, Mon, Tues, Wed, Thurs
 11am - 6pm
 Adults £2.50 Garden
 Adults £1.50 House Tour
 Senior Citizens / Students £2.00
 Children Under 10 Free
 Friends Season Tickets £10.00
 Group Discounts
 Coffee lunch & tea in the Card Room

Weddings: Functions and Corporate Hospitality
 For Enquiries please contact
 The Estate Office

Higham Park Bridge, Canterbury,
 Kent, CT4 5BE.
 Telephone / Fax : 01227 830830
www.higham-park.co.uk

Higham Park



and Gardens

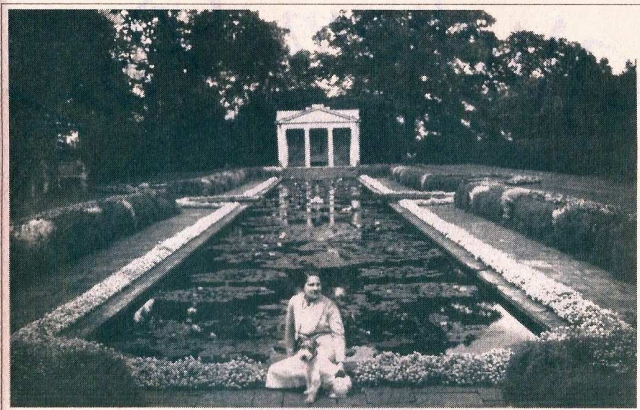
Six Centuries
 of History
 Six Minutes from
 Canterbury

Stately Home and Landscape Gardens
 Beautiful palladian building, Italian Water and Rose Gardens - profusion of water lilies Yew hedges, Secret Garden specimen trees, massed spring bulbs.



Higham Park Bridge Canterbury Kent CT4 5BE
 Telephone / Fax : 01227 830830

Higham Park and Gardens



Water Garden 1936

- A Pleached Hornbeam
- B Acer Davidii
- C Acer Grisium
- D Parrotia Pesica
- E Euonymus Atlatus

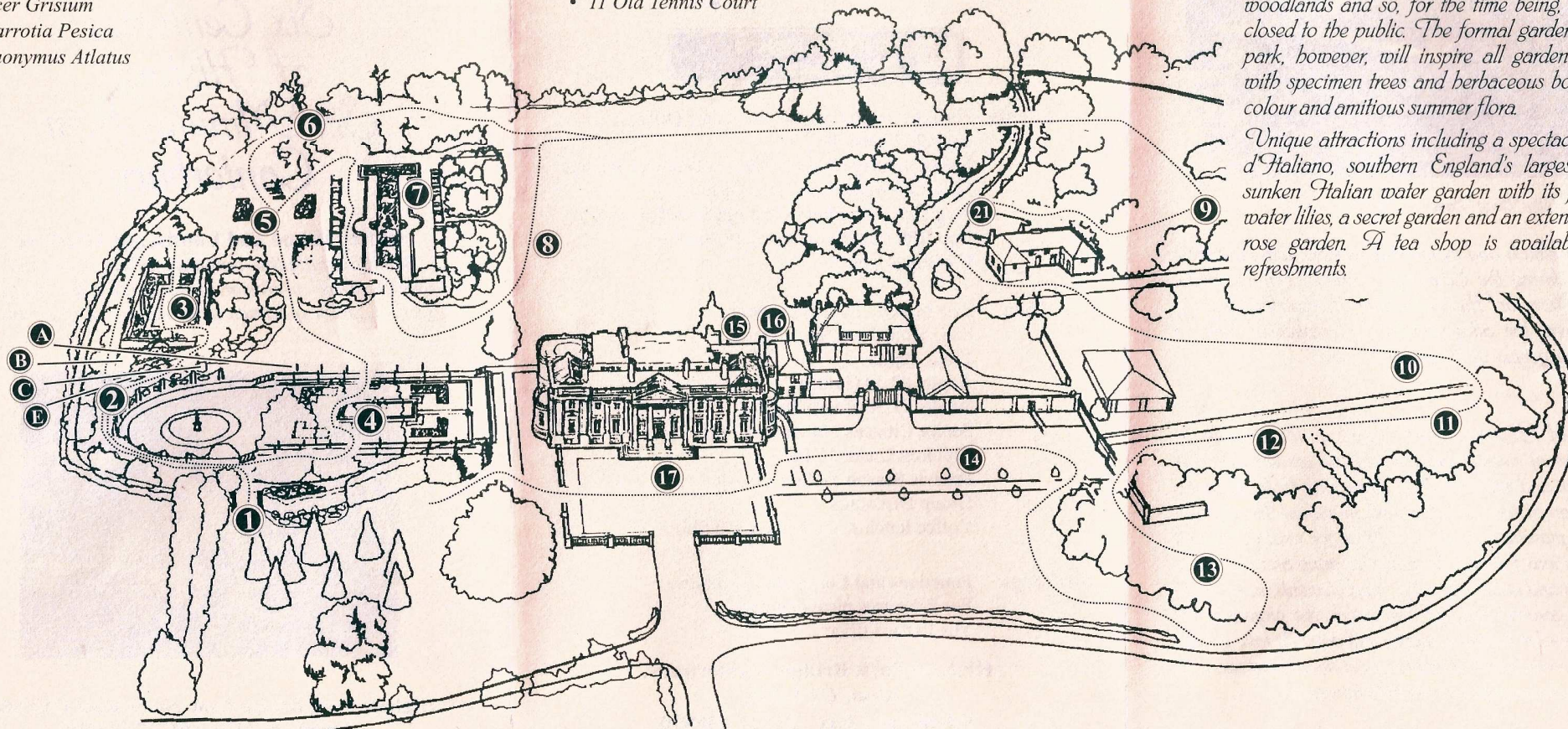
- 1 Entrance
- 2 Boundry Walk
- 3 Secret Garden
- 4 Sunken Rose Garden
- 5 Stag Walk
- 6 Birch Walk
- 7 Italian Water Garden
- 8 Great Lawn
- 9 Woodland Walk
- 10 Kitchen Garden
- 11 Old Tennis Court
- 12 Culpepper Garden
- 13 Bamboo Walk
- 14 Zborowski Walk
- 15 Tea Room
- 16 Toilet
- 17 Higham
- 18 Coach House
- 19 Garden Cottage
- 20 Stables
- 21 Generator House

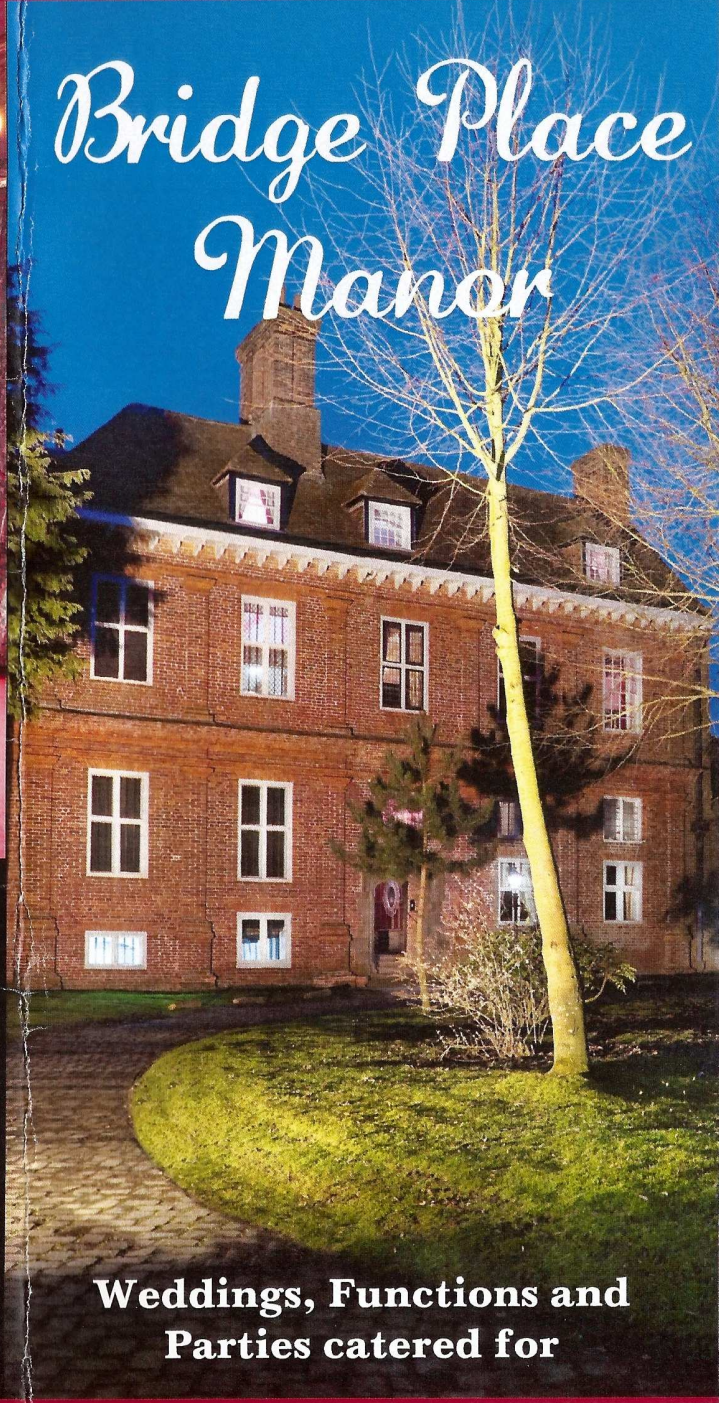
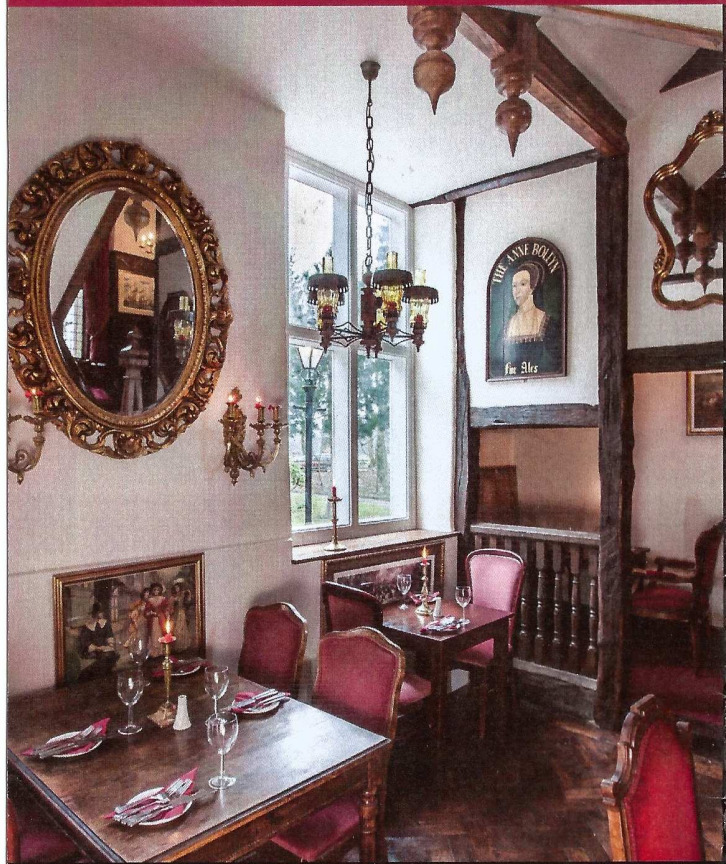


Rose Garden 1850

Higham's parkland and gardens extend some 25 acres. Work has yet to begin on the lower park and woodlands and so, for the time being, must remain closed to the public. The formal gardens and upper park, however, will inspire all garden enthusiasts, with specimen trees and herbaceous borders, spring colour and amitious summer flora.

Unique attractions including a spectacular giardino d'italiano, southern England's largest yew-lined, sunken Italian water garden with its profusion of water lilies, a secret garden and an extensive terraced rose garden. A tea shop is available for light refreshments.





Bridge Place Manor

Bridge Place Manor

Bourne Park Road,
Bridge, Canterbury,
Kent, CT4 5LF

At Bridge village turn beside church,
Bridge Place Manor is 200 yards
on the right.

Tel: 01227 830208
www.bridgeplacemanor.co.uk

Weddings, Functions and
Parties catered for

Introducing a new venue for good food, wines,
and beers all beautifully prepared by our
talented chefs using locally sourced ingredients
and of course in this idyllic 1638 hotel restored
to its former glory.

Peter Malkin invites you to wine and dine
this Saturday evening 6pm onwards or this
Sunday lunch 12pm-4pm at a cost of
£18 per head and a complimentary bottle
of wine between two people.

Please phone us to reserve a table:
01227 830208

