

# BRIDGE

Past – Present – Future



## EXHIBITION

**BRIDGE VILLAGE HALL, HIGH STREET, BRIDGE**

**Thursday 8th September til Sunday 11th September**

**10.00 am ~ 4.00 pm**

Organised by **BRIDGE PARISH COUNCIL**  
to mark the

**CENTENARY of PARISH COUNCILS**



Press Release

**BRIDGE - PAST, PRESENT & FUTURE**

an

**EXHIBITION**

1994 is the centenary of the start of Parish Councils as we know them, and the BRIDGE Parish Council are celebrating this event with a major exhibition "BRIDGE - PAST, PRESENT and FUTURE" The exhibition will be held in the Village Hall, High Street, Bridge on Thursday 8th; Friday 9th; Saturday 10th and Sunday 11th SEPTEMBER from 10 am until 4 pm.

The exhibition will be mainly of historic photographs of the village, village people, the history of some of the principal houses and characters from the last 100 years, a pictorial view of the present village and a display of the Partnership scheme for the future of the village. All the important events which have affected the development of the village will be featured.

Developed from the Poor Laws the 1894 Local Government Act provided for the formation of this third tier of Local Government and was an important step in the democracy of the country. Bridge holds a special place in this development as at the time it was one of the principal villages outside Canterbury.

**Don't forget the dates: 8th - 11th SEPTEMBER, 10 am - 4 pm Village Hall, High Street, Bridge.**

Contact:

Chairman of the Council, Councillor J. Hill, Renville Oast, Bridge  
Tel 0227 830215 (h)  
0227 768484 (w)

Councillor M.J.Gulvin, 92 High Street, Bridge  
Tel 0227 830881 (w & h)  
Fax 0227 832111

Renville Oast,  
Renville,  
Bridge,  
Canterbury,  
Kent, CT4 5AD.

24th August 1994

Mr.M.Ward,  
Manager,  
BBC Radio Kent,  
Graylaw House,  
20/22 Watling Street,  
Canterbury,  
Kent, CT1 2UL.

Dear Martin,

Re BRIDGE - PAST, PRESENT & FUTURE

I am enclosing a Press Release regarding our Exhibition that we spoke about.

I think this is something that would be of interest since we have been supplied with photographs by people in the village, either old folk who have supplied background information or the children of people born in the village. We thus have a span going back over 100 years.

We have had material supplied to us from as far as Eastbourne, Derby and even Canada.

Entry to the Exhibition is free and there will be reproduction postcards of the village as it was in the past.

Yours sincerely,

Chairman

Enc.

Renville Oast,  
Renville,  
Bridge,  
Canterbury,  
Kent, CT4 5AD.

18th August 1994

Ms. C. Simpson,  
Director,  
The Canterbury Centre,  
St.Alphege Lane,  
Canterbury,  
Kent, CT1 2EB.

Dear Caroline,

I am enclosing details of our Exhibition, an Invitation to the Opening, and a poster which I shall be grateful if you will display.

I will contact you on your return from holiday with a view to taking you to a preview of the Exhibition, and hope that we can arrange to bring it over to the Centre for display in September.

We have the Chairman of Kent County Council, the Lord Mayor of Canterbury and Lord Mountcharles coming to the Opening.

Yours sincerely,

John E Hill  
Chairman

Encs.



# PARISH COUNCIL OF BRIDGE

Chairman: John Hill  
Renville Oast  
Renville  
Bridge  
Canterbury  
Tel. 0227 830215

Clerk: Mrs. M. Church  
72a New House Lane  
Thanington Without  
Canterbury CT4 7BJ  
Tel. 0227 458437

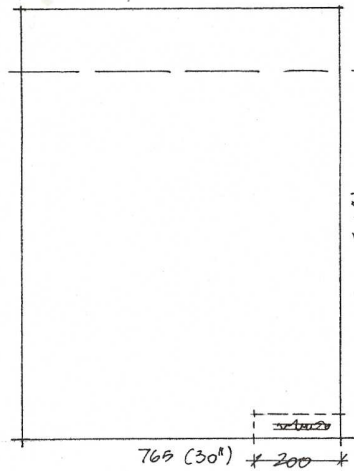
This year sees the centenary of the formation of Parish Councils and, as you may already be aware, the Parish Council will be holding an exhibition in the Village Hall on September 8-11th. The theme of the exhibition will be Bridge - Past, Present and Future.

I am writing to ask whether you have any material - photographs, postcards or other memorabilia and reminiscences - that might be relevant to such a display. If we were able to use anything of yours we would, of course, take very great care of it and return it to you after the event.

If there is any way in which you feel able to help, please do get in touch with me.

Yours sincerely,

TYPICAL  
PANEL  
LAYOUT.

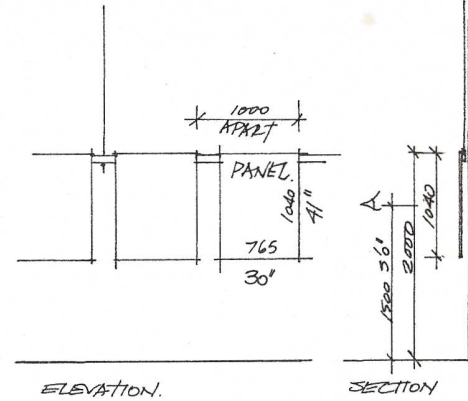


KEEP 150mm 6" FREE  
FOR TITLE

BRIDGE PARISH  
COUNCIL WILL  
PROVIDE:

- (i) TITLE PRINTED
- (ii) REPRODUCTION OF  
DESCRIPTIONS  
WRITING ETC
- (iii) ANY OTHER ASSISTANCE  
REQUIRED.

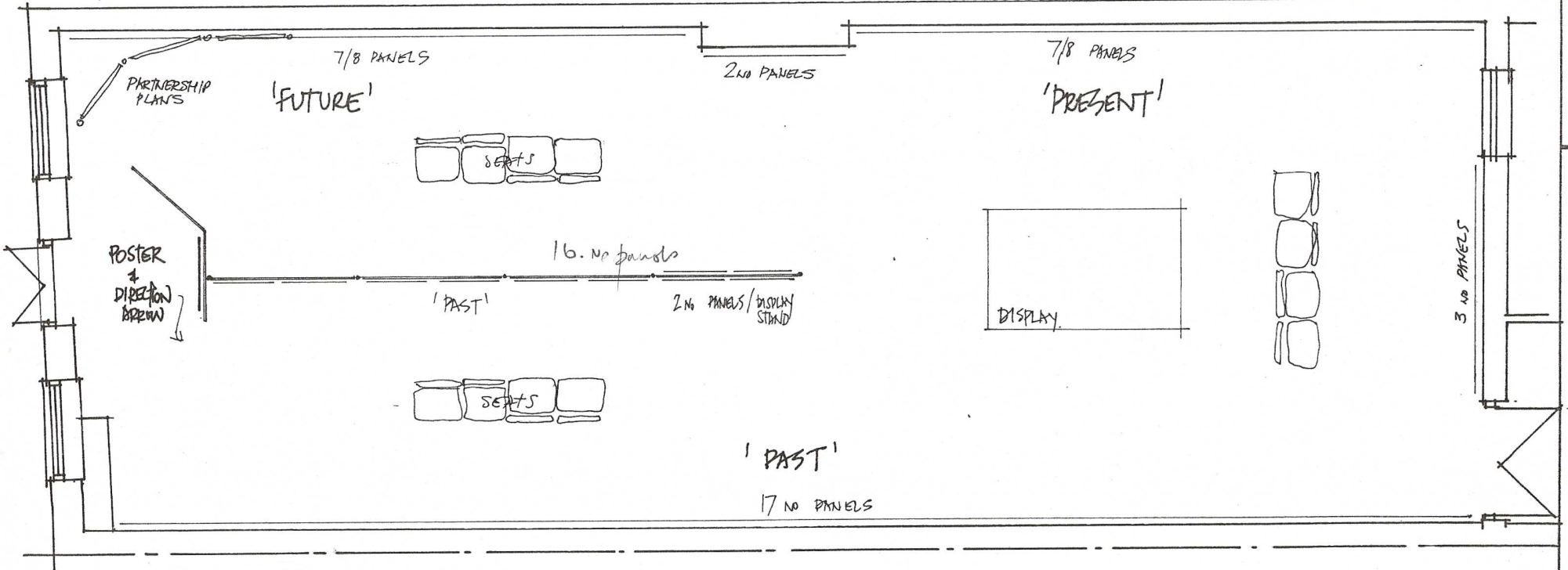
MAX 75mm FOR NAME OR  
SYMBOL OF PANEL PROVIDER.



50 X 25 BATTEN  
HANGING FROM  
TOP OF WALL.

ELEVATION.

SECTION



**Gulvin & Marsh**  
Chartered Architects  
92 High Street, Bridge  
Nr. Canterbury, Kent CT4 5LB  
Tel: (0227) 830881

Client  
**BRIDGE PARISH COUNCIL**

Scale 1:50  
Date APRIL 94  
Drawn MJC

Drawing title  
**EXHIBITION**

Job title

**WENGER**

First 4 snaps must have been taken about 1931/32 and all show the riding stables of Capt. Maslin & his brother George and the stables were behind the Red Lion ( I think this was the name of the pub - the entrance to the stable yard was almost opposite the W.C. Chapel.

1. The post-card shows my father, who would have been known to the locals as Toby Godden, trimming a hoof.
- 2 Dad again ' grooming a horse. Gentleman with hands in pocket is either Capt. Maslin or his brother. Building behind him backed on to the river and trout were sometimes caught from a window in the rear !
- 3 Clients of the school preparing for a ride.
- 4 Father leading them off.
- 5 I think these show Capt. Maslin & his brother dressed as Lifeguards and Dad as the driver, the occasion may have been the 1935 Jubilee but Dad was not working for the Capt. then, however we had returned to Patricxbourne by 1935 and the Maslins may have still been in business
- 7 6 This PC suggests the Maslin stables were still in business because I think it is Capt. Maslin in the trap with my father and he may have sold the trap to Bifrons. It was used to take the laundry to Bifrons private laundry ( which you know well ' ) The horse was called Sportsman and he was the only one to have nipped me '.
- 8 7 Arthur Swan from Bridge who worked as stable lad at Bifrons, probably 1935/36. Had sisters living in Bridge & Patricxbourne
- 9 8 This Kentish Express picture shows a horse called Dolphin winning a Point to Point. The horse was owned by Miss R. Talbot from Bifrons, trained by my father and ridden by a local farmer named Tom Long,
- 10 4 Miss R. Talbot with my father riding "shot gun" at a local meet.
- 11 6 Myself at Bifrons with Middletons Garden an entry in Canterbury Carnival.
- 12 11 "Garden of England" the winner of the decorated cycle class - appears to have been taken in Bridge but have no more details, except that the cycle could not be ridden whereas mine could - I can remember riding to Canterbury and back with the help of a tow rope from Dad's cycle.

I am sorry the quality of the snaps is so poor but 60 years ago it was only a box Brownie not a Nikon !

For the Jubilee I took part in a "Keep Fit" display in Bridge followed by various foot races somebody somewhere must have photographs of these events.







