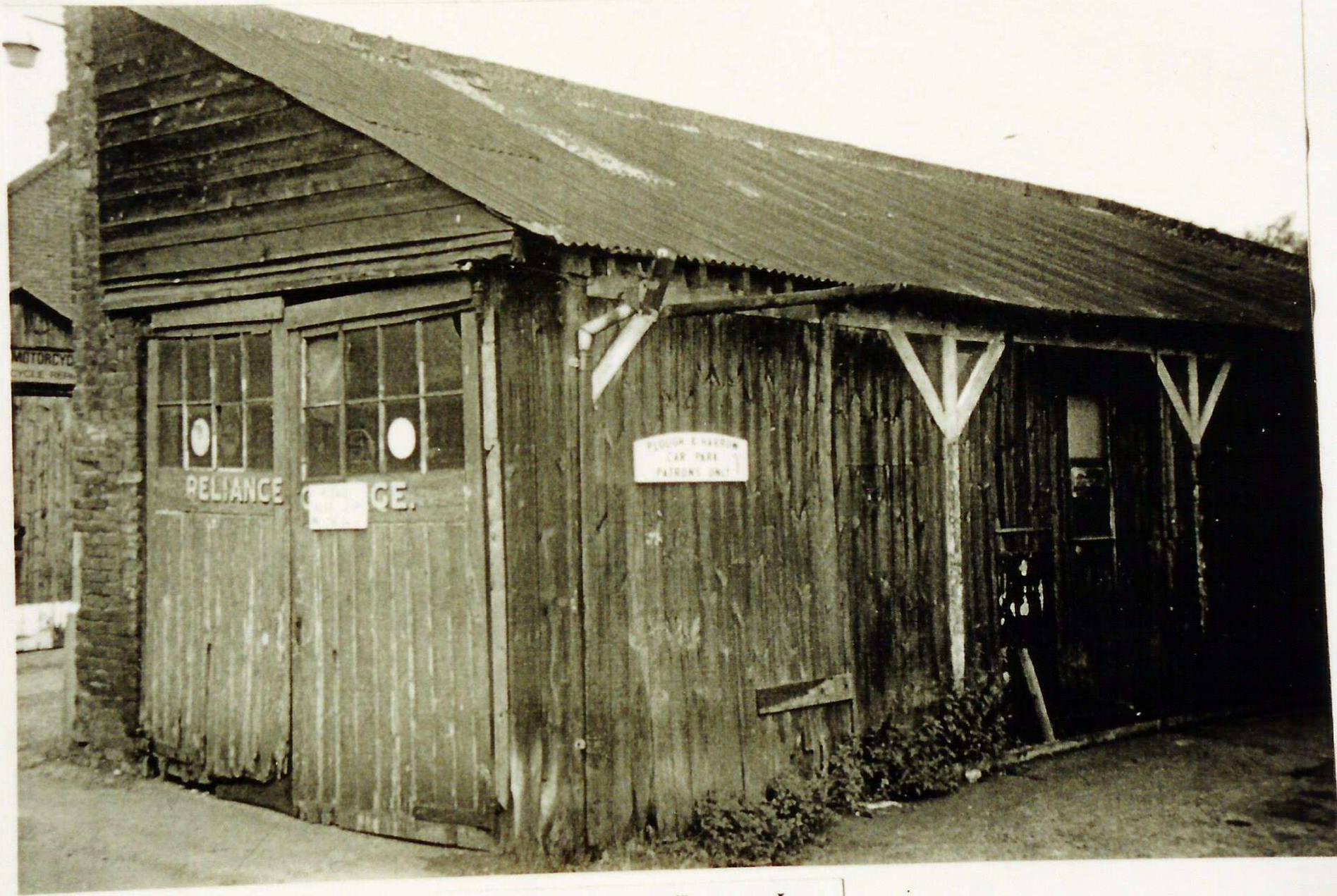






Fire Brigade pumping out flood



The Station, Brewery Lane





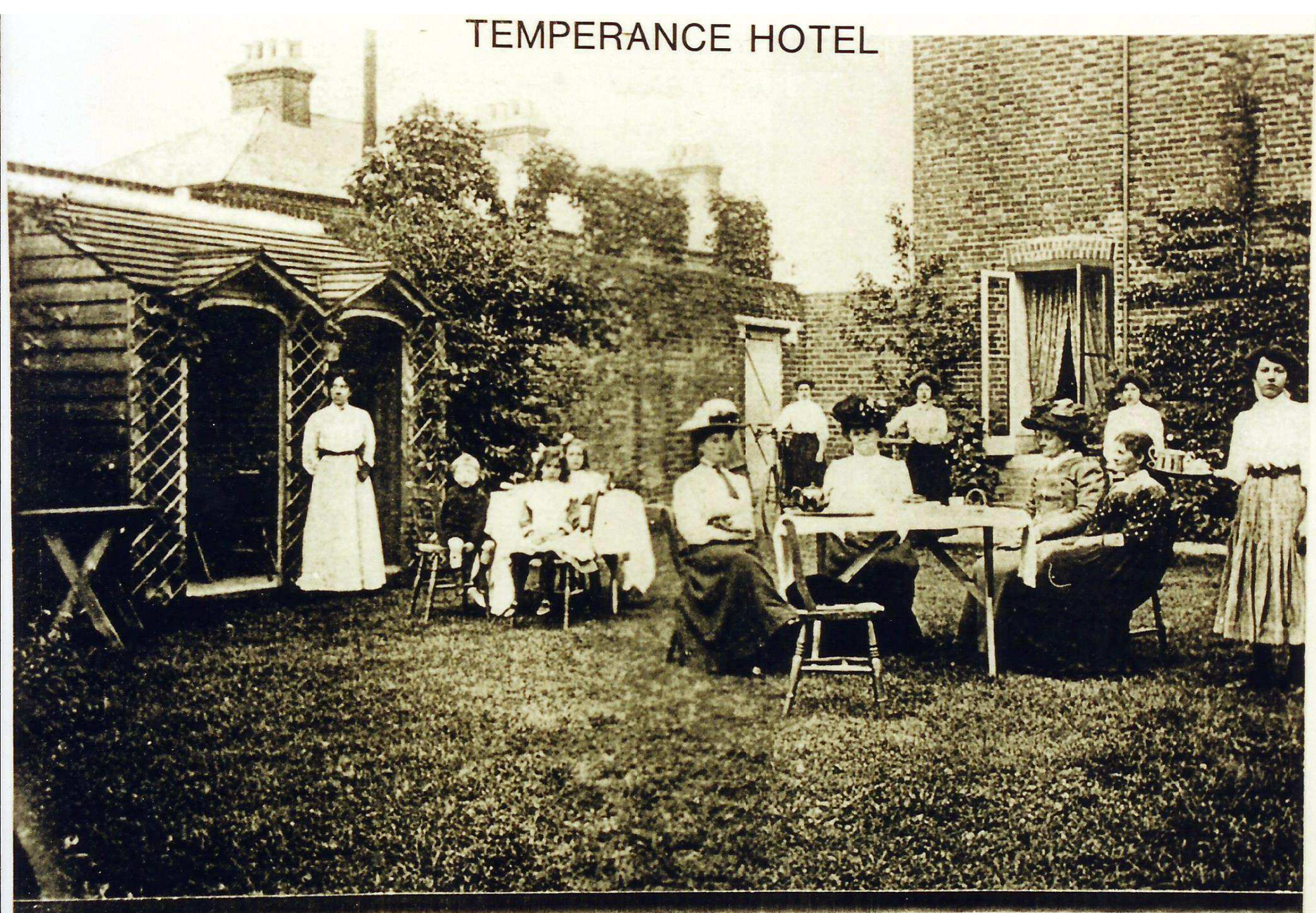
The hall in 1960's





BRIDGE STREET, NORTH VIEW

# TEMPERANCE HOTEL







CHEMIST

OPEN  
oil  
service

High St



Dwelling: Mill House

Census Place: Bridge, Kent, England

Source: FHL Film 1341227

**William WHITE**

Rel: Head

Occ: Miller

**Rebecca WHITE**

Rel: Wife

**Emily WHITE**

Rel: Daur

Occ: Scholar







BRIDGE STREET, SOUTH VIEW





Sea Gardens, Red Lion Inn, Bridge.





of Messrs. Furley and Carroway, and  
and of Messrs. Norton, Trist, Watney, and Co.,  
Royal Exchange, E.O.



Bridge Hill House.

## Steeple in a storm

Like many stories it began on a quite ordinary day. Bridge was either at lunch or dozing after it. The children were in the playground waiting for afternoon school to begin. Then it happened — an almighty clap of thunder simultaneous with lightning. The children squealed and rushed indoors as the rains came, and the village found itself the target of one of the most violent thunder storms in many a long day.

At the time Ernest Cassell was washing up in the kitchen of his Brewery Lane home. He glanced up and saw pieces of timber splintering from the church spire. Realising it had been hit he watched to see any signs of fire. Mercifully none appeared and he put through a call to the vicarage to report matters to me.

A preliminary inspection in torrential rain revealed a gaping hole in the steeple about sixty feet up and a considerable quantity of debris littering the churchyard.

### Counting the Cost

Nothing much could be done until the rain stopped, save for telephoning churchwardens and the architect John Clague of *John Clague & Partners*. A hasty site meeting was fixed for when the storm was over but the sound of the fire brigade tearing along Bridge High Street found me back at the church, happily to discover we were not the object of their attentions. Does anybody know who was? Unconfirmed rumour said it was Highland Court!

Acting with great speed two representatives of *John Clague & Partners* were on site and had arranged for a builder to stand by for emergency repairs. Unfortunately the damage was beyond their reach but thanks to the telephone the architects were able to contact a steeplejack and he was on the job first thing the following morning. By an odd coincidence he was due to survey the weather vane at St. Mary's, Patixbourne on the Friday.

### It could have been worse!

Steeplejack Peter Harknett had ladders up to the weather vane with incredible speed and to the astonishment of villagers, who had never seen the like. His is undeniably a highly-skilled profession. 'How *does* he do it?' was the question on everyone's lips!

An immediate and thorough inspection of the steeple, inside and out, produced the reassuring news that it could have been worse. The basic structure was untouched, the bulk of the damage being to the surface wooden shingles. However the beam that supported the enormous clock weight had been quite seriously split necessitating its replacement once the clockwork had run down and the weight come to rest at ground level.



1952

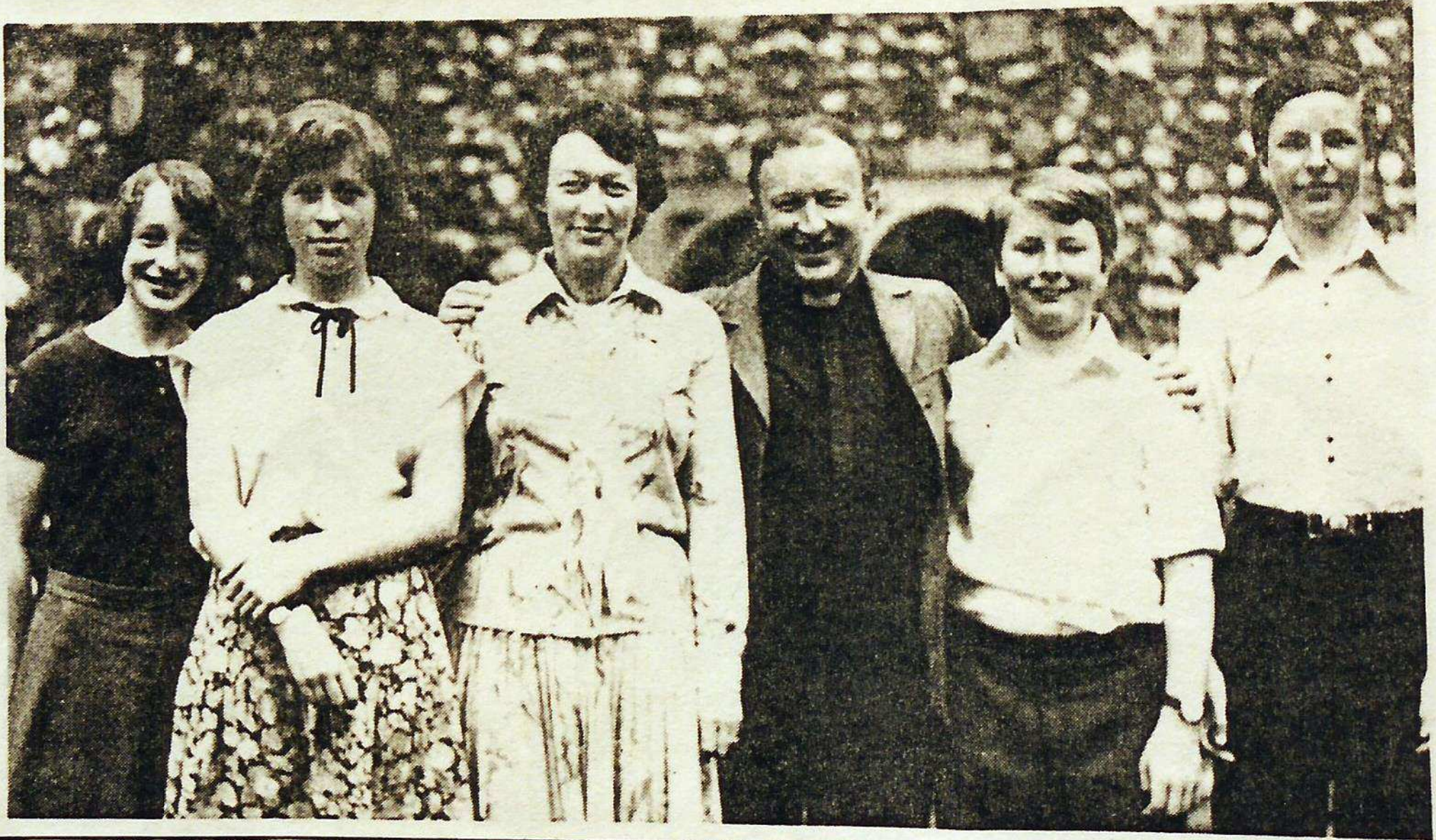


1952

W. WOOD







# Meet the Family

by  
Raymond Gilbert







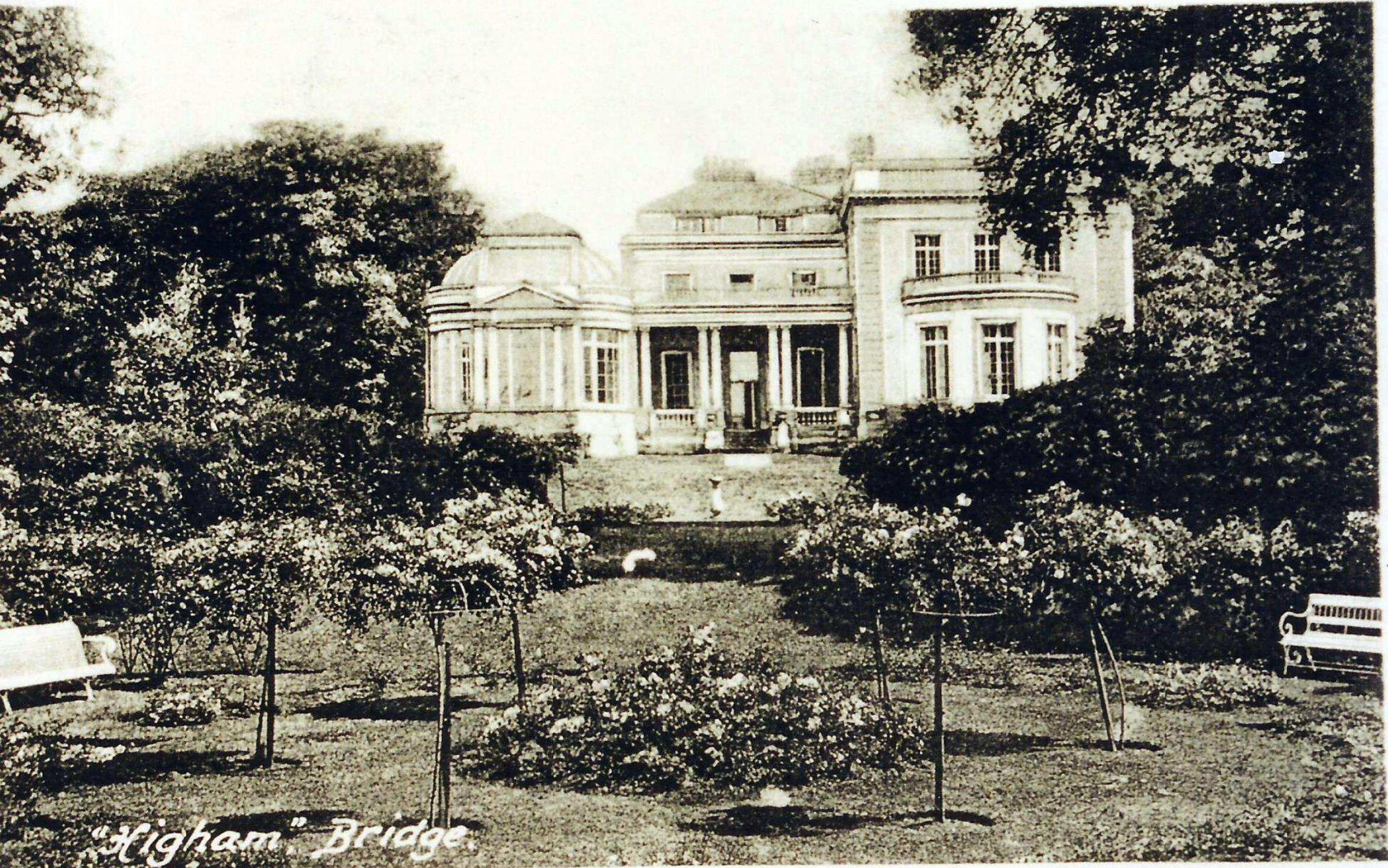
UNION LANE  
BRIDGE



Mary Gable

PLOUGH  
&  
HARROW

STOP

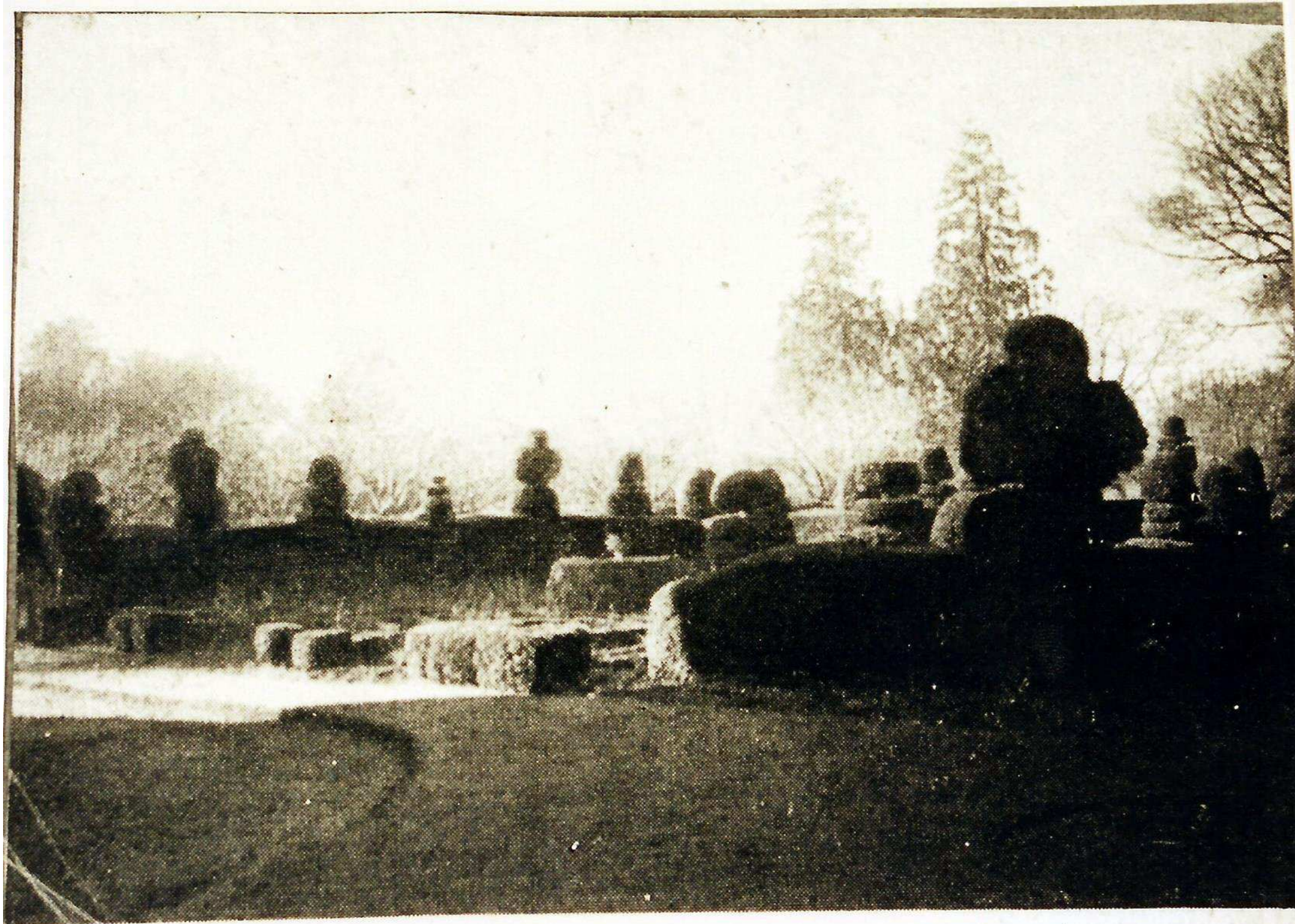


*"Higham" Bridge.*

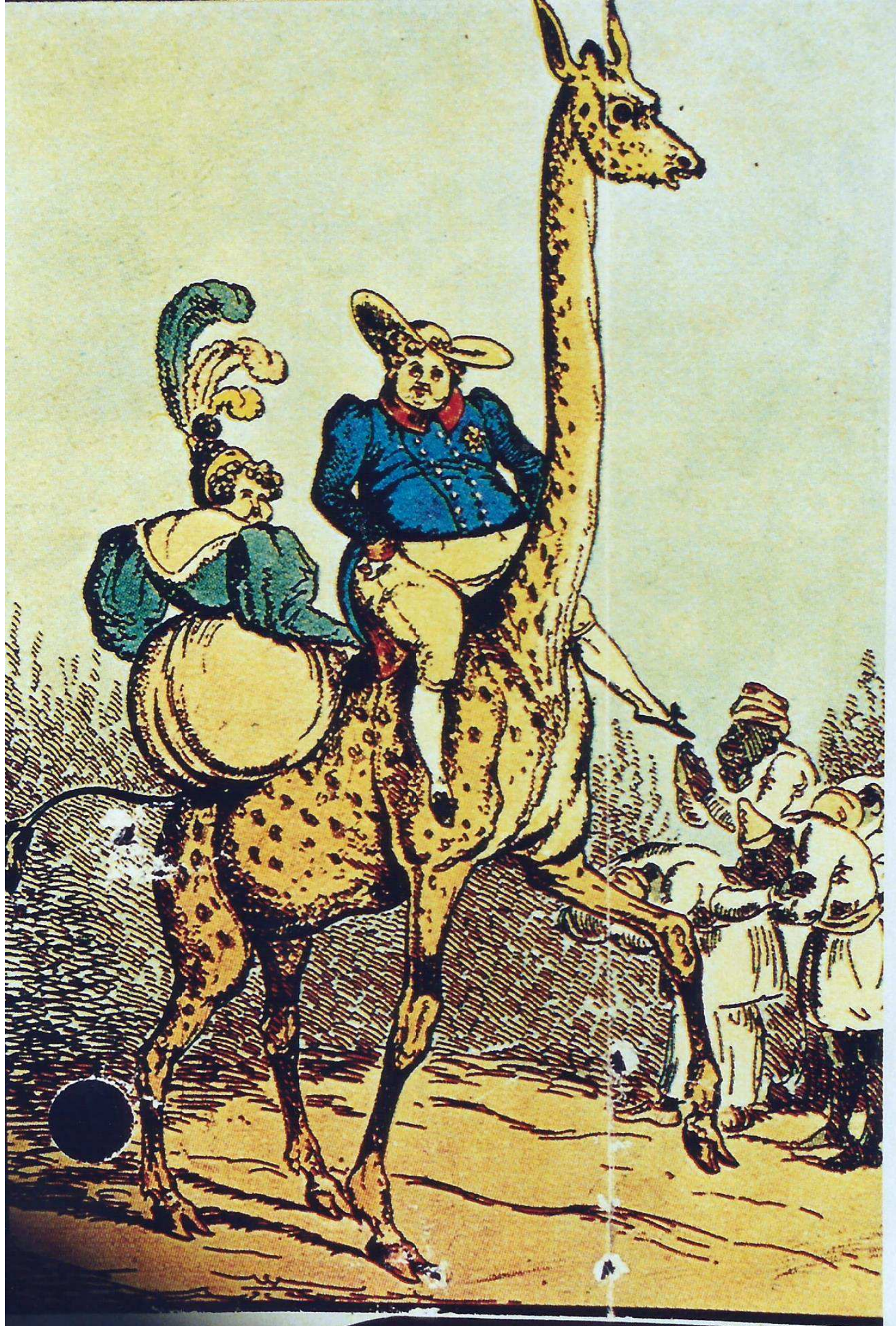


Rear View

Bourne House.



TOPIARY IN THE GARDENS OF BIFRONS, NEAR CANTEI





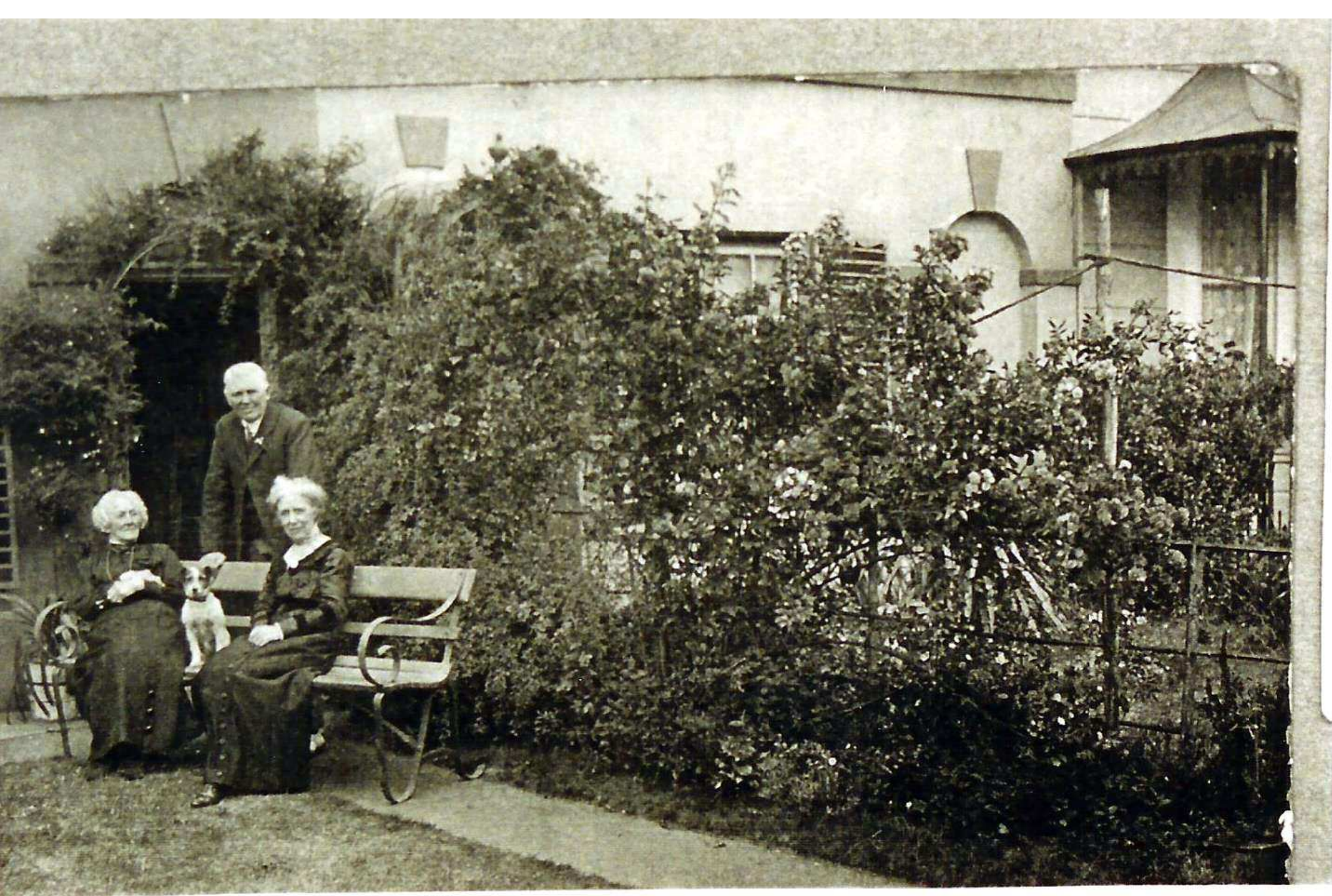
Howard W. Kincaid  
Georgetown

# WILLS























4603

S. E. & C. R. (See Back Available Day of issue ONLY.)

BRIDGE to SHORNCLIFFE

Via Elham

1/2 Third 1/2 Shorncliffe Shorncliffe

4603

2 | 1 | 1 | 0 | 1 | 6 | 8 | 7

SOUTHERN RAILWAY.

BRIDGE

The holder is prohibited from entering the Company's Trains. Not Transferable

Admit ONE to PLATFORM 1D. AVAILABLE ONE HOUR.

This Ticket must be given up on leaving Platform.

FOR CONDITIONS SEE BACK

1 | 2 | 3 | 4 | 5 | 6

057

001

SOUTHERN RAILWAY.

This ticket is issued subject to the By-laws, Regulations and Conditions stated in the Company's Time Tables, Bills and Notices.

Available on DAY of issue ONLY.

Bridge to

Bridge Victoria

Bridge Victoria

VICTORIA

Via Canterbury West

THIRD CLASS Fare 8/8

THIRD CLASS Fare 8/8

001

056

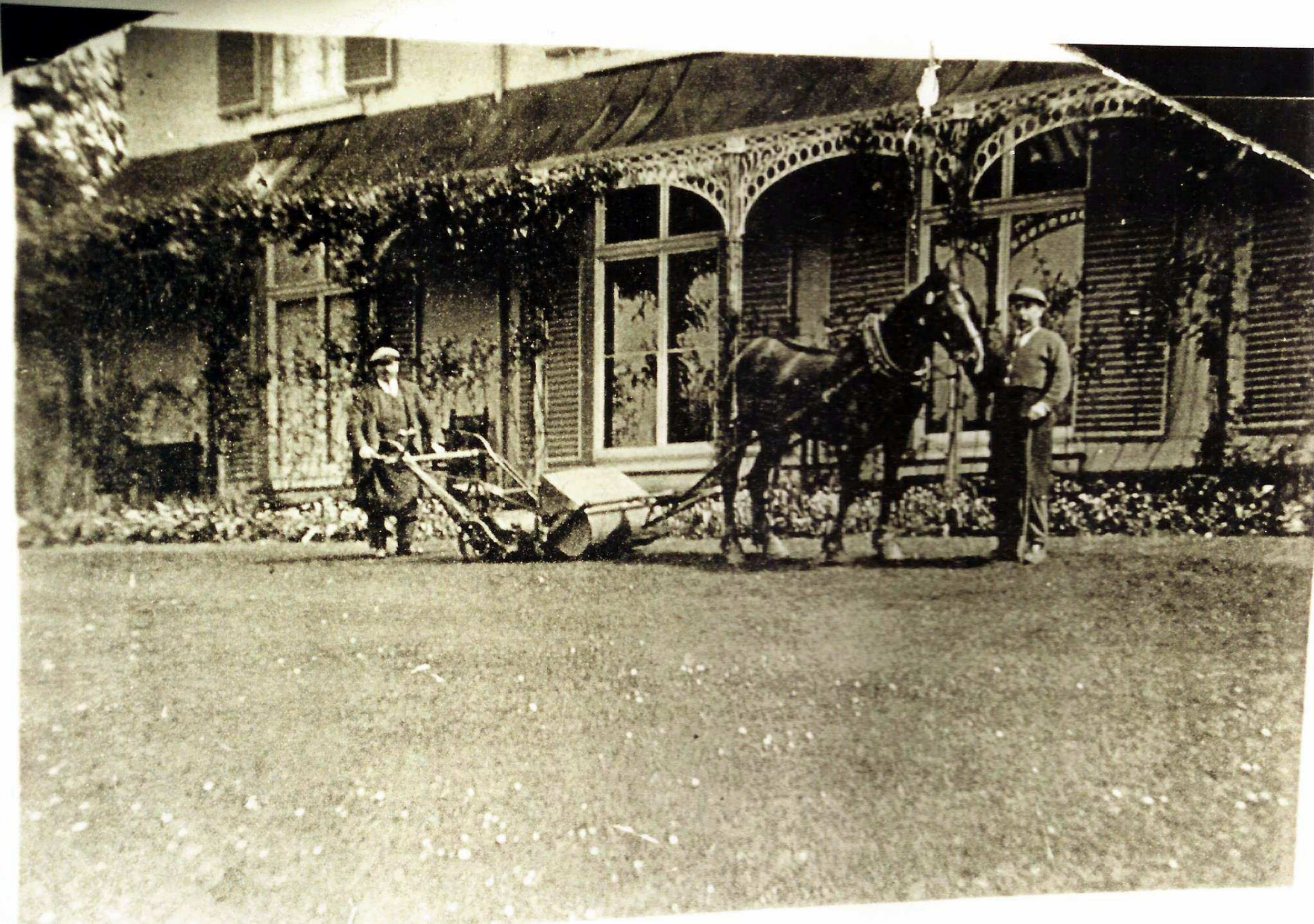
S. E. & C. R. (See Back Available Date of issue ONLY.)

BRIDGE to

CANTERBURY STH.

4d First. 4d Canterbury Canterbury S.

056







BRIDGE, S.A.P., 1910

Members of the Bridge Fire Brigade













