







8351

JOANE THE SECOND  
HARLET OF  
WIFE OF S. AM  
THIS LIFE TH  
EVRIED IN THE  
IN DOVE  
A MONUMENT  
MEMORY  
ELIZABETH  
DYDLEY  
MASTER OF  
S. AM  
LIFE TH  
DYED  
WHERE  
WHO

ANNO DOMINI MDCCLXXII



KANE THE SECOND DAUGHTER OF WALTER GO  
HARFLET OF BEAUMBOURNE ESQ THE FIRST  
WIFE OF S<sup>r</sup> ARNOLD BRAEMS KN DEPARTED  
THIS LIFE THE 10<sup>th</sup> DAY OF JULY 1643 AND WETH  
BURIED IN THE CHURCH OF ST. MARTIN  
IN DONOR IN THE WEST SIDE WHERE THERE IS  
A MONUMENT ERECTED TO HER EVERLASTING  
MEMORY :

ELIZABETH THE SECOND DAUGHTER OF S<sup>r</sup>  
DYDLEY DIGGS OF CHILHAM CASTLE KN  
MASTER OF THE ROYLES SECOND WIFE OF  
S<sup>r</sup> ARNOLD BRAEMS KN DEPARTED THIS  
LIFE THE 17<sup>th</sup> DAY OF MAY 1643 AND  
LIEETH BURIED IN THE MIDDLE OF THIS CHANCEL  
WHERE HER NAME IS INGRAVEN AND FOR  
WHOM THIS MONUMENT IS ERECTED

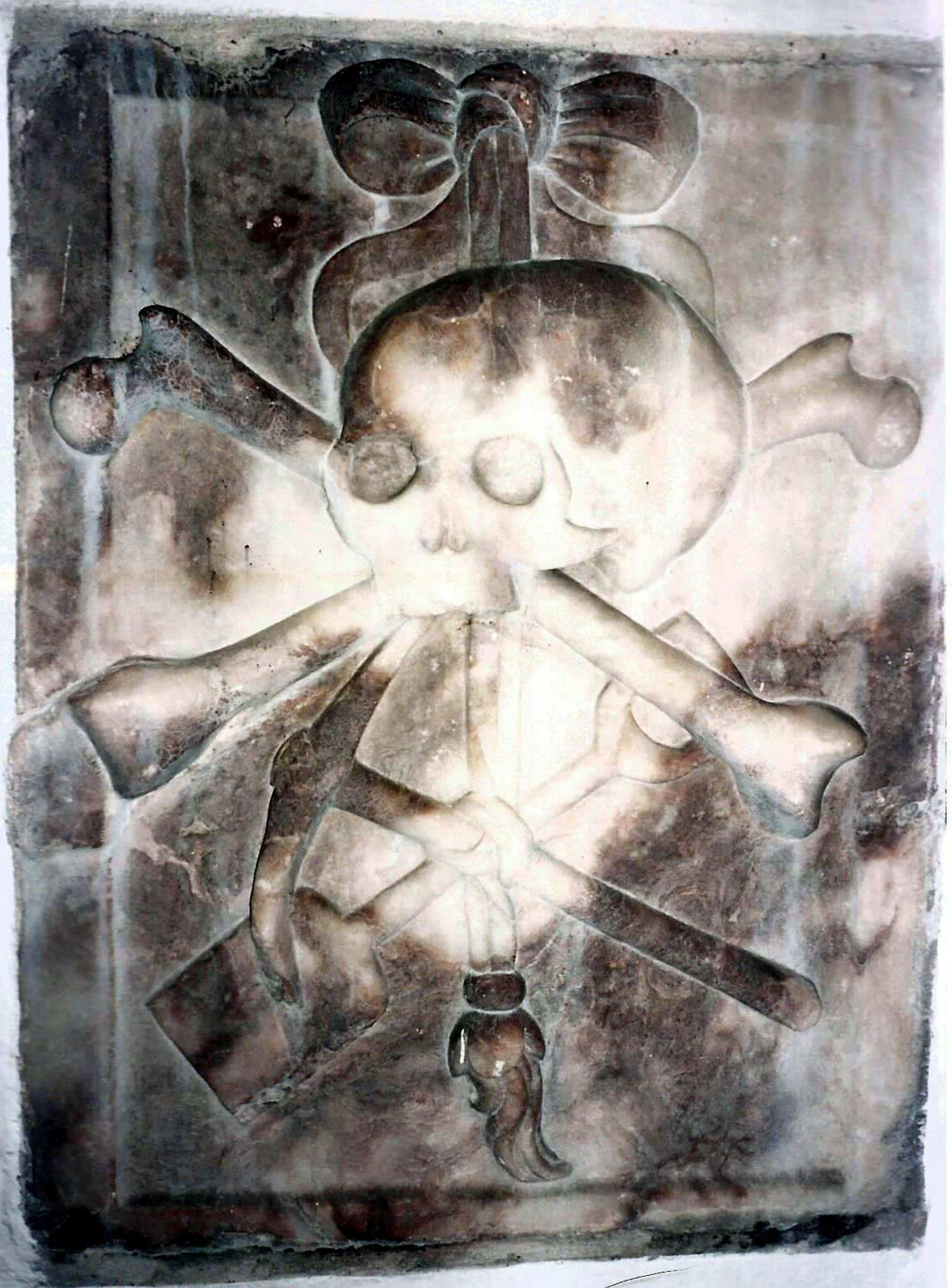


BORN JUNE 12 1809

JAMBLIUS SICARD

DIED NOV 2 29 1850



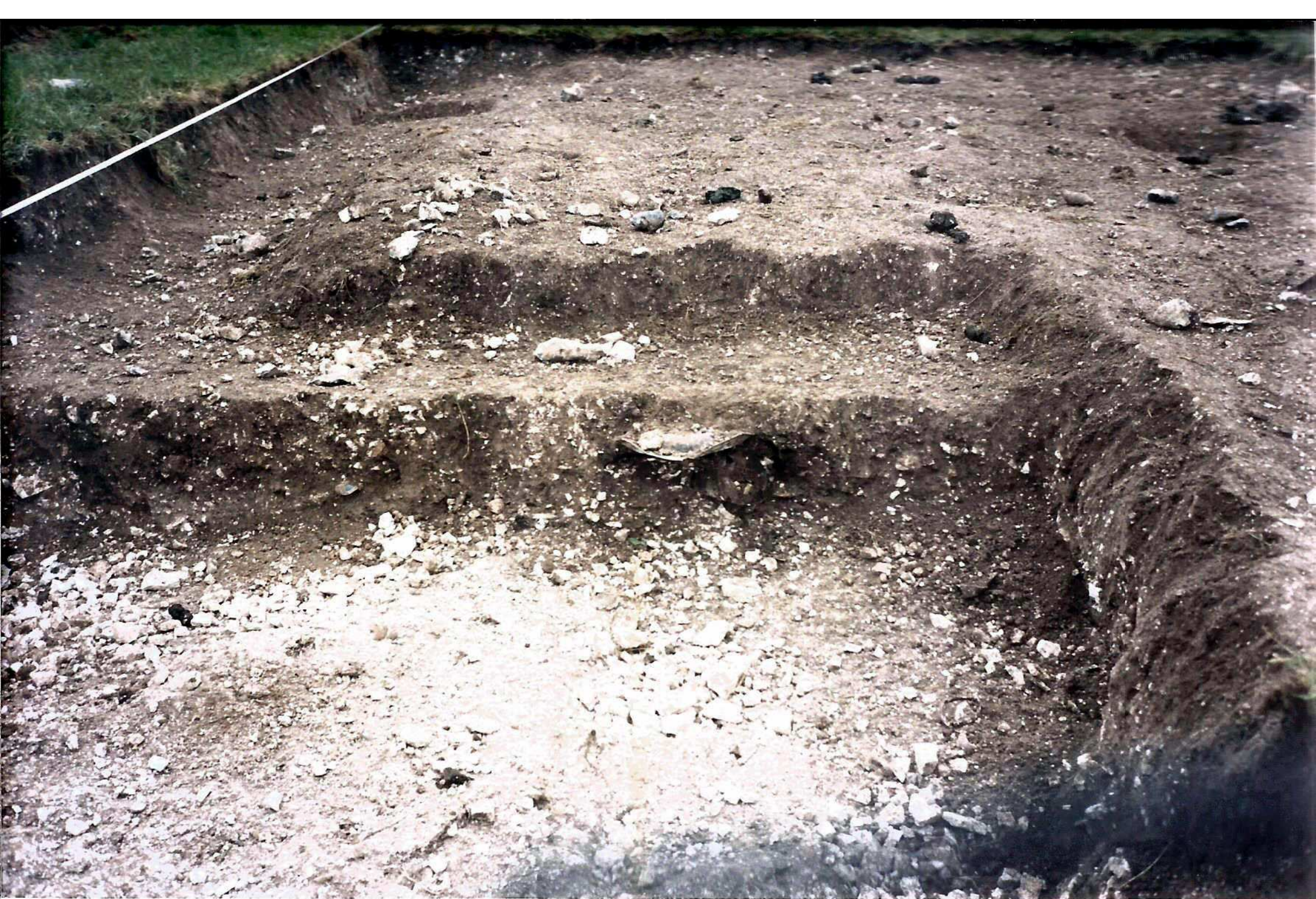




ELIZABETH THE SECOND DAUGHTER OF  
HENRY SECONDE OF ENGLAND CASTLE BRAY  
MASTER OF THE MARSHES SECOND WIFE OF  
LEWIS DE LAUNY KN DEPARTED THIS  
LIFE THE 15 DAY OF MAY 1554 AND  
WAS BURIED IN THE MIDDLE OF THIS CHAPEL  
WHERE HER NAME IS INGRAVEN AND FOR  
WHOM THIS MONUMENT WAS SET

ANNO DOMINI 1554













Recycling  
is so easy  
when its  
collected  
from your







