

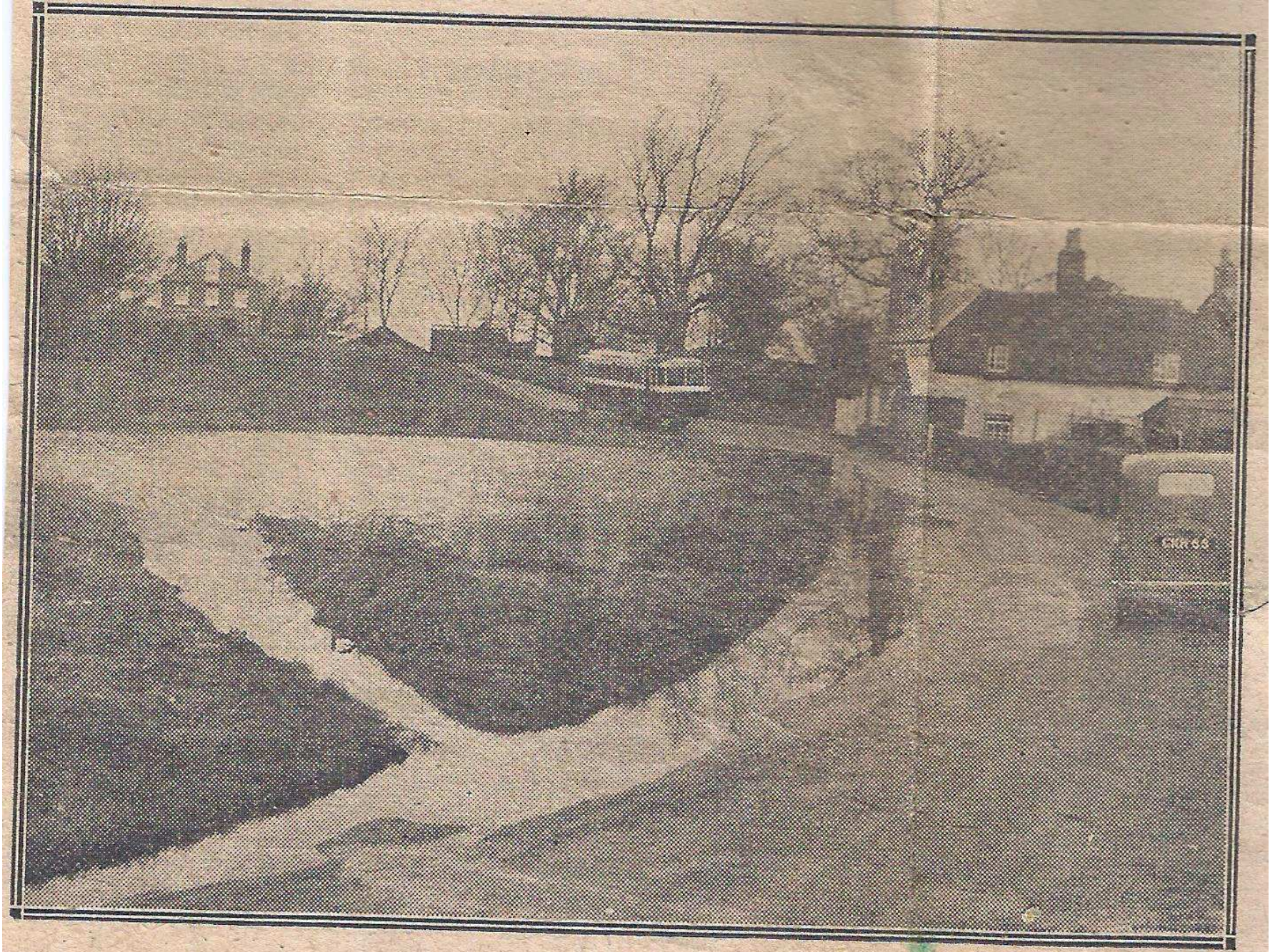
A scene at Patrixbourne. Picturesque, but uncomfortable.





The floods in the village. The road to the left of the main Canterbury road as one enters Bridge from Dover.





### **COLDRED VILLAGE GREEN.**

On Thursday night last week the pond at Coldred Green was so full that the water was across the road by the public-house. By Friday morning the road was comparatively clear.





**THE NAILBOURNE FLOODS.**

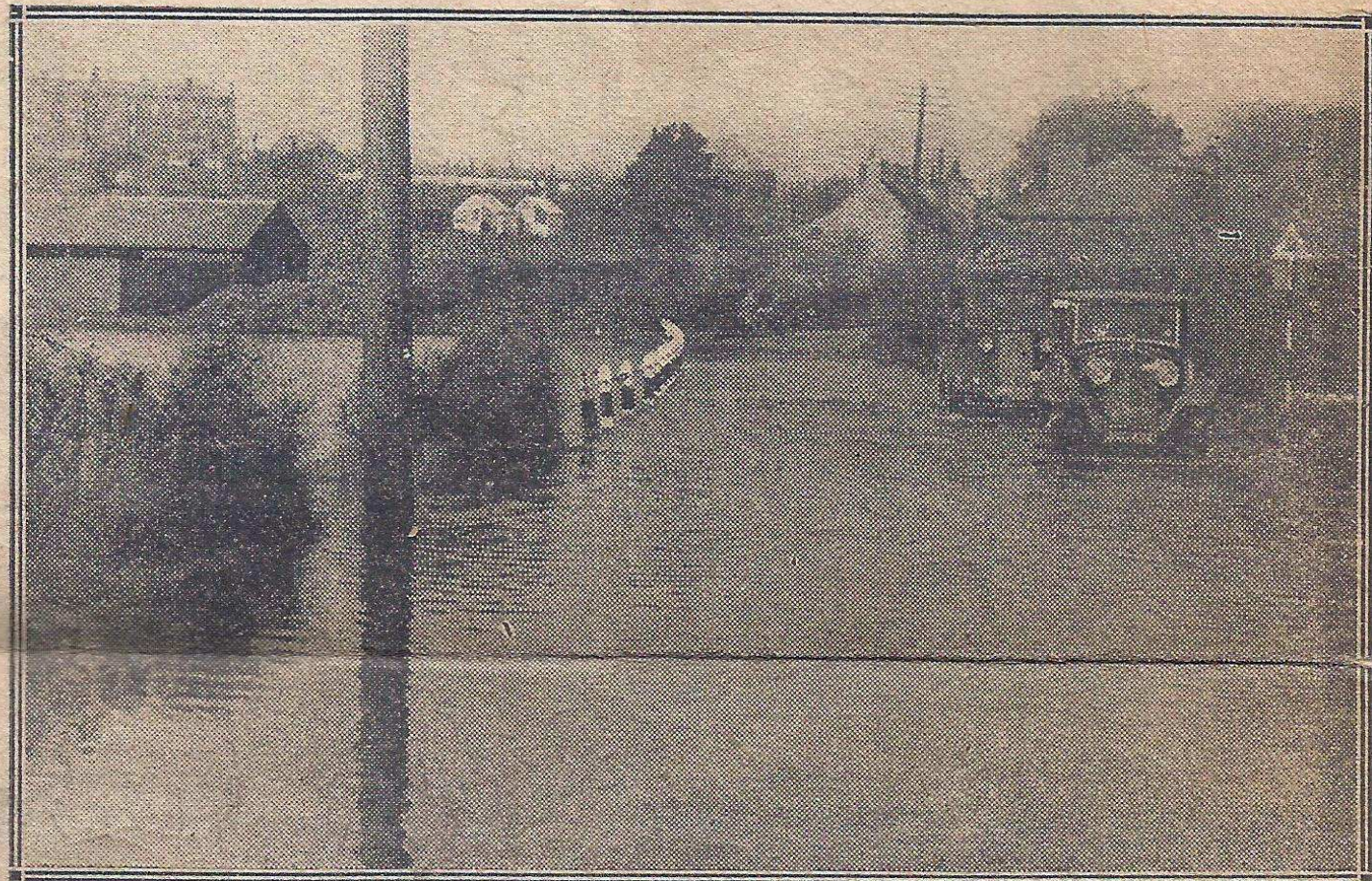
The water from the Nailbourne stream has caused flooding at Bridge. This photo shows the water covering the fields on the Bishopsbourne side of the Church (at the bottom of Bridge Hill).





**THE MAIN CANTERBURY ROAD AT BRIDGE.**  
*Shopping under difficulties.*





### FLOODS AT EASTRY.

The pond at Buttsole, on the Dover side of Eastry village, has overflowed on to the main Sandwich road, seen in the first picture. In the second, a motor lorry is passing along the road from Vinson Farm.