



LEYSDOWN AND WARDEN

[012735] [13-6-67]

Panorama looking south-east over the crumbling cliffs at Warden Point to Leysdown, with Shellness beyond. The outline of the Swale is clearly defined here with Seasalter on the opposite bank, on the mainland, to the left of the picture.



SITTINGBOURNE

[890650] [14-6-62]

Looking south-east along the A2 before the growth of the Eurolink Industrial Estate. The railway station can be seen just left-of-centre, with the branch line to Sheerness in the bottom-left corner. Bapchild is situated just above the centre with Teynham at the point where the A2 kinks to the right. (Compare with the similar view on back cover taken three years later.)



FAVERSHAM

[015614] [3-6-56]

*An early view of the town taken before pedestrianisation and its designation as a conservation town. The Guildhall is clearly visible just left-of-centre, with the parish church situated top-centre.



GRAVENEY

[053631] [4-1-78]

This fascinating vertical view of Graveney and Luddenham Marshes shows an aspect of Kent not often realised: the ancient division of land into a patchwork of small, irregularly shaped fields, here made more attractive by the numerous water channels and drainage ditches. Graveney church is situated about one-third of the way up the picture, in the centre.



DUNKIRK

[069589] [26-6-75]

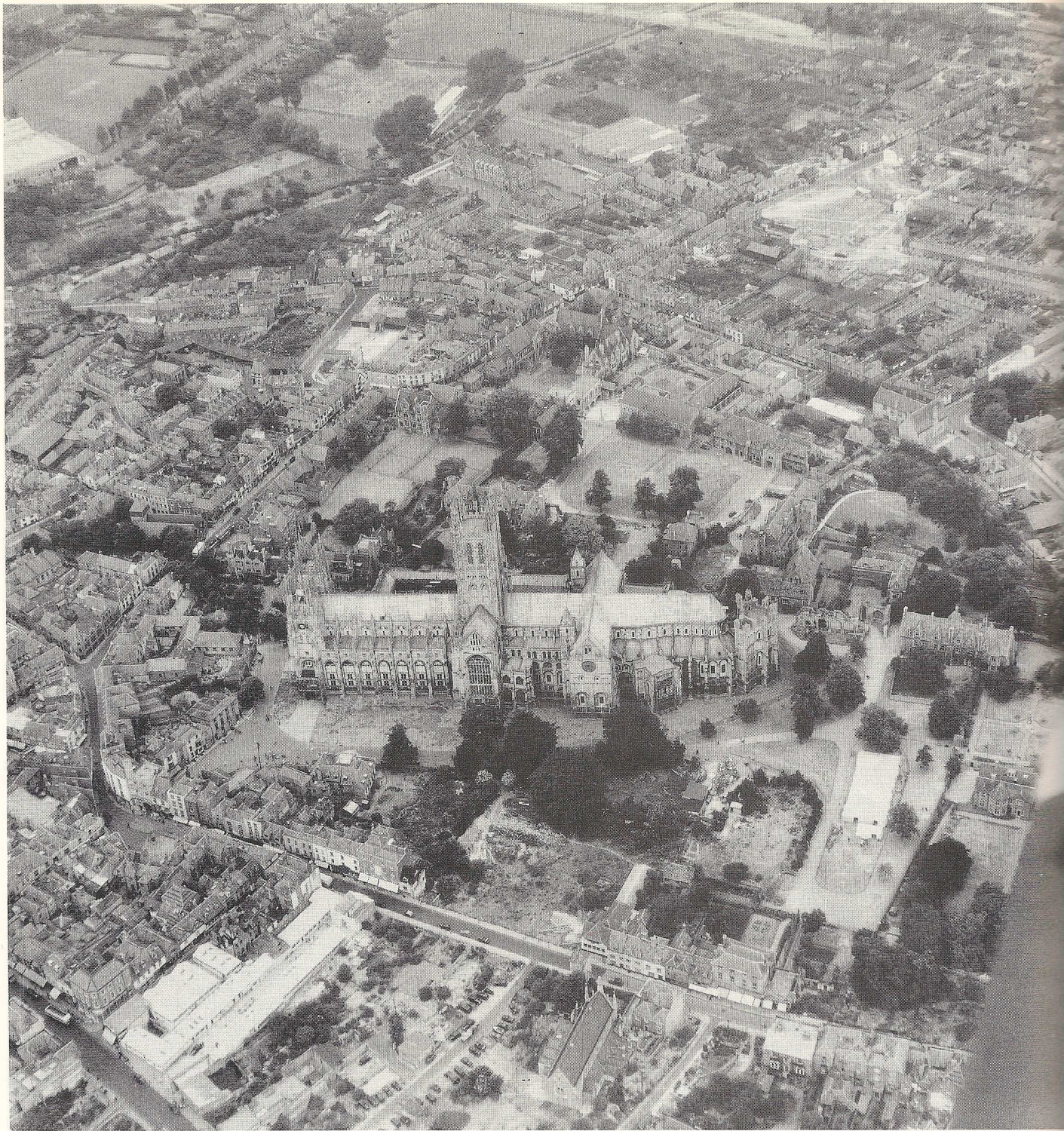
Panorama looking east-south-east, showing the A2 bypass under construction. The parish church is situated just below centre. Canterbury can be seen across the top of the picture with the cathedral faintly visible just left-of-centre.



STURRY AND FORDWICH

[177604] [3-6-56 ?]

A very interesting, and early, photograph of two Stour-side villages – Fordwich, to the top of the picture, and Sturry. The Great Stour flows across the view from near the top-left corner diagonally downwards. The railway runs across the bottom-left corner.



CANTERBURY

[152577] [29-6-49]

A very early view of Canterbury, still showing evidence of damage sustained in the air-raids of the Second World War. The cathedral dominates the centre of the picture, of course, but many changes have since been made to the streets that surround it.



CANTERBURY

[145592] [13-6-67]

A panoramic and rather more distant view looking south-east, showing the rebuilt city centre twenty years on and the spread of the modern suburbs. For all its growth, Canterbury remains, essentially, an attractive country town.



CANTERBURY – UNIVERSITY OF KENT

[141598] [10-7-72]

When seen from the air, the University of Kent at Canterbury looks quite striking on its hilltop setting overlooking the city.



CHILHAM

[068534] [7-7-71]

Chilham has retained much of its medieval atmosphere, as seen from this view. New developments have been kept well away from the ancient centre of the village. The church is situated just above centre with the village square below and the castle just below centre.



BRIDGE

[183541] [3-6-56]

Looking north-west along the old A2, Watling Street, long before the construction of the present bypass, towards Canterbury. The church steeple can be seen poking through the trees near the centre of the picture.



BISHOPSBOURNE

[188527] [16-6-76]

Bishopsbourne has hardly grown at all since the Middle Ages and remains a delightfully small village. The crop marks to the top of the picture may mark the site of a previous settlement on the opposite bank of the tiny Nailbourne stream.



WHITSTABLE

[085645] [29-6-73]

Panorama looking north-east towards the harbour (centre). Whitstable Castle stands on the wooded hill just to the right of the harbour, with Tankerton beyond. The eastern edge of Seasalter occupies the bottom-left corner of the picture.



CHESTFIELD

[134652] [7-7-71]

Panorama looking north over Chestfield to Long Rock, the light area in the sea. Tankerton lies to the top-left of the picture, with the holiday camps of Swalecliffe to the right, along the coast.



HERNE BAY

[155680] [4-6-65 ?]

Looking east from Hampton Pier (lower left corner) to the pavilion on the main pier before its recent destruction, caused by a fire in 1970 and a gale in 1979. Laid out largely in Victorian times, the town has a very spacious and airy atmosphere. The railway station can be seen near the top-right corner.



RECVLVER

[228694] [19-7-49]

This early view of Reculver shows the beginnings of what have now become extensive caravan parks. The ruins of a Norman church, with its distinctive towers which act as an aid to shipping, sit within the remains of a Roman fort, clearly defined here. The coastguard cottages near the towers have since become derelict.



SARRE

[262652] [1-6-73]

Sarre used to be a thriving port on the Thanet side of the Wantsum Channel. It is now a pleasant village with a disused windmill (situated just below the village on the edge of the fields). The banks of the Wantsum are marked approximately by the road to Monkton, on the left side of the picture. The crop marks may show the former extent of Sarre before it shrank to village status.



BIRCHINGTON

[288688] [14-6-61]

Looking out to sea over the western fringes of Birchington to Minnis Bay. Largely built up in modern times, the interest value of this photograph lies in the crop marks and ring ditches in the fields, which may mark the site of a much more ancient settlement.



MARGATE

[356689] [4-6-73]

Panorama looking north, showing the railway station far-left, with the former Dreamland amusement park to the right of that. The harbour is near the centre of the picture, alongside the now demolished pier which was damaged in a storm in 1978. The clearly defined line running from the station to the bottom-right corner is the now dismantled railway that formerly went directly to Ramsgate.



RAMSGATE

[384640] [13-6-67]

The entirely man-made harbour at Ramsgate is very impressive when seen from the air. This view is taken looking north-east across Dumpton to the North Foreland lighthouse. By following the coastline round from the harbour it is possible to locate Bleak House, at Broadstairs.



WINGHAM

[243574] [14-6-61]

Looking north-east towards Ash. Wingham has grown to the status of a small town over the years, but at its heart it is essentially still a village. The road cutting across the upper-left corner follows the line of the Roman road to Ash.



SANDWICH

[332583] [29-6-49]

The clearly defined earthworks of the medieval town wall show to good effect in this early view of Sandwich. So too does the River Stour, which follows an irregular course on the bed of what was once the Wantsum Channel.



GOODNESTONE

[259540] [11-6-73]

Looking north-west towards Wingham with the church at the top-centre of the picture and Goodnestone House top-left. Again, there are some interesting crop marks in the fields outside the village which may mark the site of a former settlement.



AYLESHAM

[232514] [11-6-73 ?]

These very interesting crop marks are situated in the fields between Womenswold and Aylesham. The industrial estate occupies the upper-centre with the village itself top-right. The edge of Aylesham Woods can be seen upper-left.



NONINGTON

[252525] [11-6-73]

Looking south-east towards Barfreston. The church is situated in the upper-centre of the photograph and, once again, some interesting crop marks are to be seen in the adjacent fields. Despite coal mining activity in the area, Nonington has retained its attractive village centre.



DEAL

[377520] [29-6-49]

Looking along the seafront at Deal the sixfoil plan of the castle is easily discernible. The 18th/19th century Governor's House, shown here on the right-most inner bastion, suffered damage in the last war and has since been removed. Some of Deal's extensive barrack buildings can be seen in the lower-left corner.



ST. MARGARET'S AT CLIFFE

[365432] [10-7-72]

The coastal scenery along the South Foreland looks spectacular when viewed from the sea (facing north-west). Much of the area is now protected by the National Trust. St. Margaret's at Cliffe church can be seen just left-of-centre, about a quarter of the way down the picture.