



DOVER CASTLE

[327418] [10-7-72]

The magnificent fortifications of Dover Castle span several millennia. The keep, central fortifications and encircling walls date from Norman times, with Napoleonic additions, whilst the horse-shoe shaped earthwork (right of centre) which is itself an Iron Age hillfort, encircles a Saxon church and Roman lighthouse.



DOVER

[327418] [26-6-48]

An early view of Dover showing the Eastern Docks before their development into a major ferry port. Several of the buildings in the centre of the town still show signs of damage from air-raids in the last war.



STOWTING

[127420] [24-6-54]

From the ground the clump of trees in the centre of the photograph looks insignificant, but here it can be seen as a circular mound. It represents the earthwork remains of Stowting Castle.



FOLKESTONE

[234355] [4-6-76]

From the air Folkestone harbour has an attractive and distinctly Continental atmosphere, while the cobbled streets behind remind one of the West Country.



FOLKESTONE WARREN

[252378] [26-6-48]

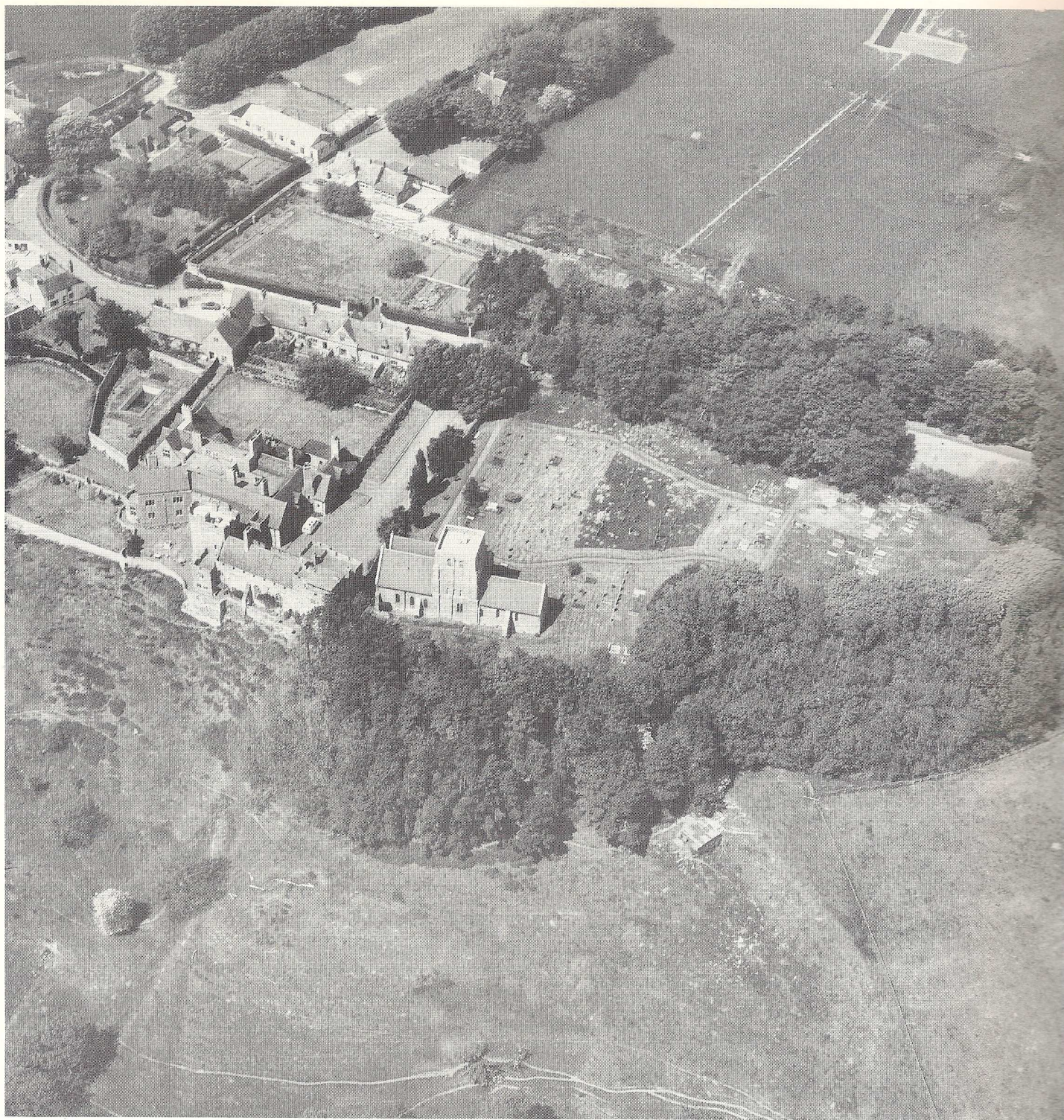
The coastal scenery at the Warren is dramatically beautiful, especially when seen from the viewpoint. Its present appearance is due to a number of landslips in the area. Capel-le-Ferne, on top of the cliffs, has grown considerably since this view was taken.



SALTWOOD CASTLE

[163358] [26-6-48]

The secluded and partly restored remains of Saltwood Castle, on the hills above Hythe, attracted many visitors even in 1948. The plot to murder Thomas Becket was hatched behind its walls and it survives today as one of the finest Norman castles in the south-east.



LYMPNE

[119345] [24-5-76]

The present village lies mostly to the north of the old centre, which is dominated by the church and castle. They used to stand at the head of a coastal cliff but the sea has long-since retreated. Just visible in the lower-left corner are the tumbled remains of a Roman fort.



DYMCHURCH

[099291] [26-6-48]

Looking north-east along the coast and over Romney Marsh, this photograph of Dymchurch was taken before its development as a seaside town. A number of 19th century Martello Towers are to be seen along the coastal edge. The church is just visible in the clump of trees in the centre of the main settlement.



LYDD

[043210] [2-7-55]

Despite being hemmed in on all sides by military and gravel workings, Lydd remains an attractive place, perhaps more so 30 years ago, when this view was taken, than today. The church can be seen just right-of-centre and, a little way above that, are the tiny triangular remains of the village green.



NEW ROMNEY

[068257] [19-7-49]

As its name suggests, New Romney is of newer foundation than its near neighbour, Old Romney, but even this can now be regarded as an ancient settlement. The church used to stand near the old coastline and the new housing estate (now much enlarged) is on land that was once a small harbour.



OLD ROMNEY

[032253] [19-7-49]

The sea has retreated still further from the more ancient settlement of Old Romney. Unlike New Romney, however, which has survived and grown beyond its medieval status, Old Romney has shrunk to a handful of houses surrounding what is now an outsized church.



DUNGENESS

[088185] [2-7-55]

Looking south over the shingle ridges at Dungeness before the construction of the controversial nuclear power station, which would occupy the top-right corner of this view. More of a moonscape than a landscape, this apparently barren wilderness has a unique fascination.



WYE

[054465] [16-6-76]

Looking north along the wide main street to the rather squat parish church. To the right are the extensive buildings of Wye College. The old centre of this former village can be seen surrounded by more recent buildings, which have elevated Wye to the status of a small town.



CHARING

[953493] [29-6-53]

An early view of Charing looking north-east before improvements to the A20 by-passed the village. The church stands out prominently towards the top of the photograph with, beside it, the impressive remains of the Archbishop's Palace.



ASHFORD

[997407] [7-7-71]

This modern housing estate in the Stanhope area of Ashford has an almost surrealistic appearance, standing out harshly against the surrounding landscape.



ASHFORD RAILWAY WORKS

[018415] [19-7-49]

Part of the extensive railway works at Ashford. The town centre has seen many changes since this photograph was taken, the Stour Centre now dominating the level area between the River Stour and the railway station, at the top of the picture.

Meresborough Books

Proprietors Hamish and Barbara Mackay Miller
17 STATION ROAD, RAINHAM, GILLINGHAM, KENT. ME8 7RS
Telephone Medway (0634) 388812

We are a specialist publisher of books about Kent. Our books are available in most bookshops in the country, including our own at this address. Alternatively you may order direct, adding 10% for post (minimum 20p, orders over £20.00 post free). ISBN prefix 0 905270 for 3 figure numbers, 094819 for 4 figure numbers. Titles in print January 1987.

BYGONE KENT. A monthly journal on all aspects of Kent history founded October 1979. £1.20 per month. Annual Subscription £13.00. All back numbers available.

HARDBACKS

LIFE AND TIMES OF THE EAST KENT CRITIC: A Kentish Chronicle compiled by Derrick Molock. Large format. ISBN 3077. £9.95.

THE PAST GLORY OF MILTON CREEK: Tales of Slipways, Sails and Setting Booms compiled by Alan Cordell and Leslie Williams. ISBN 3042. £9.95.

TALES OF VICTORIAN HEADCORN or The Oddities of Heddington by Penelope Rivers (Ellen M. Poole). ISBN 3050. £8.95. (Also available in paperback ISBN 3069. £3.95.)

ROCHESTER FROM OLD PHOTOGRAPHS compiled by the City of Rochester Society. Large format. ISBN 975. £7.95. (Also available in paperback ISBN 983. £4.95.)

THE LONDON, CHATHAM & DOVER RAILWAY by Adrian Gray. A major study of the development of railways in Kent. ISBN 886. £7.95.

THE NATURAL HISTORY OF ROMNEY MARSH by Dr F.M. Firth, M.A., Ph.D. ISBN 789. £6.95.

O FAMOUS KENT by Eric Swain. The county of Kent in old prints. ISBN 738. £9.95. **BARGAIN OFFER £4.95.**

KENT'S OWN by Robin J. Brooks. The history of 500 (County of Kent) Squadron of the R.A.A.F. ISBN 541. £5.95.

TWO HALVES OF A LIFE by Doctor Kary Pole. The autobiography of a Viennese doctor who escaped from the Nazis and established a new career in Kent. ISBN 509. £5.95.

SOUTH EAST BRITAIN: ETERNAL BATTLEGROUND by Gregory Blaxland. A military history. ISBN 444. £5.95.

HAWKINGE 1912-1961 by Roy Humphreys. A study of the former RAF Station, 100 photographs. ISBN 355. £5.95.

A NEW DICTIONARY OF KENT DIALECT by Alan Major. The first major work on the subject this century. ISBN 274. £7.50.

KENT CASTLES by John Guy. The first comprehensive guide to all the castles and castle sites in Kent. ISBN 150. £7.50.

US BARGEMEN by A.S. Bennett. A new book of sailing barge life around Kent and Essex from the author of 'June of Rochester' and 'Tide Time'. ISBN 207. £6.95.

THE GILLS by Tony Conway. A history of Gillingham Football Club. 96 large format pages packed with old photographs. ISBN 266. £5.95. **BARGAIN OFFER £1.95.**

A VIEW OF CHRIST'S COLLEGE, BLACKHEATH by A.E.O. Crombie, B.A. ISBN 223. £6.95.

JUST OFF THE SWALE by Don Sattin. The story of the barge-building village of Conyer. ISBN 045. £5.95.

TEYNHAM MANOR AND HUNDRED (798-1935) by Elizabeth Selby, MBE. ISBN 630. £5.95.

THE PLACE NAMES OF KENT by Judith Glover. A comprehensive reference work. ISBN 614. £7.50 (also available in paperback. ISBN 622. £3.95)

LARGE FORMAT PICTORIAL PAPERBACKS

EAST KENT FROM THE AIR by John Guy. 50 photographs from the Cambridge University collection. ISBN 3158. £3.50.

WEST KENT FROM THE AIR by John Guy. 50 photographs from the Cambridge University collection. ISBN 3166. £3.50.

ARE YOU BEING SERVED, MADAM? by Molly Proctor. A pictorial history of Drapers Shops in Kent. ISBN 3174. £3.50.

OLD BROADSTAIRS by Michael David Mirams. A collection of old photographs. ISBN 3115. £3.50.

OLD PUBS OF TUNBRIDGE WELLS & DISTRICT by Keith Hetherington and Alun Griffiths. A well researched pictorial history with 154 illustrations. ISBN 300X. £3.50.

GOUDHURST: A Pictorial History by John T. Wilson, M.A. ISBN 3026. £2.95.

A PICTORIAL STUDY OF ALKHAM PARISH by Susan Lees and Roy Humphreys. ISBN 3034. £2.95.

THE MOTOR BUS SERVICES OF KENT AND EAST SUSSEX — A brief history by Eric Baldock. An illustrated history from 1899 to 1984 containing 146 photographs. ISBN 959. £4.95.

ROCHESTER FROM OLD PHOTOGRAPHS — see under hardbacks.

PEMBURY IN THE PAST by Mary Standen. ISBN 916. £2.95.

OLD RAMSGATE by Michael David Mirams. ISBN 797. £2.95.

EXPLORING OLD ROCHESTER by John Bryant. A guide to buildings of historic interest. ISBN 827. £2.95.

THOMAS SIDNEY COOPER OF CANTERBURY by Brian Stewart. The life and work of Britain's best cattle painter, with 10 illustrations in colour. ISBN 762. £2.95.

KENT TOWN CRAFTS by Richard Filmer. A pictorial record of sixteen different crafts. ISBN 584. £2.95.

KENTISH RURAL CRAFTS AND INDUSTRIES by Richard Filmer. A wide variety of rural crafts. ISBN 428. £2.50.

SMARDEN: A PICTORIAL HISTORY by Jenni Rodger. ISBN 592. £2.95.

A PICTUREBOOK OF OLD SHEPPEY by Michael Thomas. 130 Old photographs, mostly from glass negatives. ISBN 657. £2.95.

FIVE MEDWAY VILLAGES by Wyn Bergess and Stephen Sage. A pictorial history of Aylesford, Burham, Wouldham, Eccles and Borstal. ISBN 649. £2.95.

OLD SANDWICH by Julian Arnold and Andrew Aubertin. 146 old photographs. ISBN 673. £2.95.

AVIATION IN KENT by Robin Brooks. A pictorial history from 19th century ballooning to 1939. ISBN 681. £2.95.

THE LIFE AND ART OF ONE MAN by Dudley Pout. A Kentish farmer's son who became successful as a commercial artist and as a children's illustrator. ISBN 525. £2.95.

OLD MAIDSTONE'S PUBLIC HOUSES by Irene Hales. 123 photographs. ISBN 533. £2.95.

OLD MAIDSTONE Vol. 1 by Irene Hales and Kay Baldock. ISBN 096. £2.50.

OLD MAIDSTONE Vol. 2 by Irene Hales. ISBN 38X. £2.50.

OLD TONBRIDGE by Don Skinner. ISBN 398. £2.50.

KENT TRANSPORT IN OLD POSTCARDS by Eric Baldock. 146 photographs. ISBN 320. £2.95.

GEORGE BARGEBRICK Esq. by Richard-Hugh Perks. The story of Smeed Dean Ltd in Sittingbourne. 80 illustrations. ISBN 479. £4.50.

STANDARD SIZE PAPERBACKS

KENT COUNTRY CHURCHES by James Antony Syms. A reprint of his first very popular collection of drawings. ISBN 3131. £4.50.

KENT COUNTRY CHURCHES CONTINUED by James Antony Syms. A second collection of drawings. ISBN 314X. £5.95.

KENT INNS AND SIGNS by Michael David Mirams. A book for all interested in the origins of pub names and signs. ISBN 3182. £3.95.

EXPLORING SUSSEX CHURCHES by John E. Vigar. A companion to 'Exploring Kent Churches'. ISBN 3093. £3.95.

A WEALDEN VILLAGE: MARDEN by Phyllis Highwood and Peggy Skelton. A well researched book for all interested in Wealden history. ISBN 3107. £4.95.

EXPLORING KENT CHURCHES by John E. Vigar. What to look for when visiting a church. ISBN 3018. £3.95.

FLIGHT IN KENT. Another selection of articles by members of the Kent Aviation Historical Research Society. ISBN 3085. £1.95.

TALES OF VICTORIAN HEADCORN — see under hardbacks.

BIRDWATCHING IN KENT by Don Taylor. Details of when and where to watch for which birds, plus very readable accounts of personal experiences. ISBN 932. £4.50.

CRIME AND CRIMINALS IN VICTORIAN KENT by Adrian Gray. An insight into an intriguing if unsavoury side of Victorian life in Kent. ISBN 967. £3.95.

CHIDDINGSTONE — AN HISTORICAL EXPLORATION by Jill Newton. ISBN 940. £1.95.

STOUR VALLEY WALKS from Canterbury to Sandwich by Christopher Donaldson. Enjoy six days walking along the route taken by Caesar, Hengist & Horsa, St Augustine and many others. ISBN 991. £1.95.

THE GHOSTS OF KENT by Peter Underwood, President of the Ghost Club. ISBN 86X. £3.95.

CURIOUS KENT by John Vigar. A selection of the more unusual aspects of Kent history. ISBN 878. £1.95.

REAL ALE PUBS IN KENT by CAMRA in Kent. ISBN 894. £1.50.

A CHRONOLOGY OF ROCHESTER by Brenda Purle. ISBN 851. £1.50.

SITTINGBOURNE & KEMSLEY LIGHT RAILWAY STOCKBOOK AND GUIDE. ISBN 843. 95p.

DOVER REMEMBERED by Jessie Elizabeth Vine. Personal memories from the early years of this century. ISBN 819. £3.95.

THE PLACE NAMES OF KENT — see under hardbacks.

PENINSULA ROUND (The Hoo Peninsula) by Des Worsdale. ISBN 568. £1.50.

A HISTORY OF CHATHAM GRAMMAR SCHOOL FOR GIRLS, 1907-1982 by Audrey Perkyns. ISBN 576. £1.95.

CYCLE TOURS OF KENT by John Guy. No. 1: Medway, Gravesend, Sittingbourne and Sheppey. ISBN 517. £1.50.

WINGS OVER KENT. A selection of articles by members of the Kent Aviation Historical Research Society. ISBN 69X. £1.95.

LULLINGSTONE PARK: THE EVOLUTION OF A MEDIAEVAL DEER PARK by Susan Pittman. ISBN 703. £3.95.

LET'S EXPLORE THE RIVER DARENT by Frederick Wood. Walking from Westerham to Dartford. ISBN 770. £1.95.

SAINT ANDREW'S CHURCH, DEAL by Gregory Holyoake. ISBN 835. 95p.

BIRDS OF KENT: A Review of their Status and Distribution. A reprint, with addendum, of the 448 page study by the Kent Ornithological Society. ISBN 800. £6.95.

Further titles are in preparation. Details will be announced in 'Bygone Kent'.

East Kent from the Air



Published by Meresborough Books

£3.50

ISBN 094 8193 158