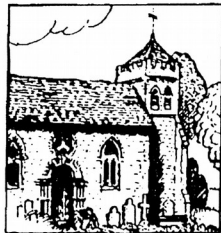


On the Nail



Bekesbourne



Patrixbourne



Bridge

A magazine for the
villages along the
Nailbourne

Aug/Sept 2012 **50p**



**FULL RANGE OF DOMESTIC
PLUMBING SERVICES
BATHROOMS/TILING
INTERIOR/EXTERIOR
DECORATING
LANDLORDS WORK
TOTAL REFURBISHMENTS
CARPENTRY
GENERAL MAINTENANCE
REFERENCES AVAILABLE/
FULLY INSURED
PLEASE CALL JEFF PULL
01227 831012
07739 416114**

Tara's Kitchen Uk

Celebration Cakes
Buffet & Bakery Style Foods
Children's Party Boxes
Free Local Delivery
Web: www.taraskitchenuk.webs.com
Facebook: www.facebook/taraskitchenuk.com
Tel: 01227 832414
Mobile: 07871422072

2 Cullings Hill, Elham, CT4 6TE

T: 01303 840577

M: 07910748152

E: info@bournephysio.co.uk

W: www.bournephysio.co.uk

**Professional Physiotherapy
for multiple conditions
& Sports Injuries**



Therapist
(ons)



OVER 20 YEARS OF...

Local, Friendly, Helpful, Professional

Design, Type, Web & Print



HAYWARD
DESIGN & PRINT

Specialists in providing a quality design and print service at a competitive price to the local community

creativity in
design type web print

Littlebourne, Canterbury, Kent CT3 1XU

T 01227 721864

E images@hayward-design.co.uk

W www.hayward-design.co.uk



An Exclusive Venue

Special Events & Weddings, Concerts, Open Air Theatre,
Business Meetings & Corporate Away-days

Community Classes & Treatments

*Ballroom, Body-Conditioning, Massage, Piano, Pilates, Singing, Squash, Tennis, Yoga,
Swimming summer 2011 (all year spa Spring 2012)*

Charlton Park CT4 5JA

Tel: 01227 831355

www.charlton-park.org

Country Florist
Country Flowers for every occasion

essentiallyhops

email shop@essentiallyhops.co.uk

tel 01227 830666



www.essentiallyhops.co.uk

Chalkpit Farm Rural Shopping, Bekesbourne, Canterbury CT4 5EU

**Mama
Feelgoods**

Fine Food Store
& Deli Cafe

Open
9 - 5pm
Monday - Saturday
10.30 - 4pm
Sundays

01227 830830

Freshly baked bread & cakes
Wine, beer & cider
Free range meat & eggs
Local & seasonal fruit & veg
Speciality cheese counter



Italian meats, anti pasti & olives
Foodie gift hampers
Art & hand made crafts
Massive cake craft range
Loose chocolates - boxed

www.mamafeelgoods.com

nicholas james
hair limited

Cutting and styling hair
in a relaxed and friendly environment with easy
free parking outside the door

BED HEAD

TIGI

PAUL MITCHELL

tel: 01227 830565

4 western ave, bridge, canterbury, kent, ct4 5ls.



R.B.W



**KENT'S WATER FEATURE
SPECIALISTS AND
POND BUILDING EXPERTS**

Garden / Pond Design, Building and Refurbishments
Pond Cleaning / Maintenance / Maintenance Contracts
Child Safe Pond Covers
Filtration Specialists
Patios - Decking - Fencing - Brickwork - Arbours

**Tel: 07563212858
FREE ESTIMATES and
CONSULTATIONS**

www.ReflectionByWater.com

Learn to Sing!

Build up your confidence,
Have fun & enjoy
music making.
All ages and abilities welcome.

Internationally Experienced
singers who work with English
National Opera and
Royal Opera,
Has spaces for students in
the Canterbury area.

Audition and exam
Preparation a speciality.

Contact:
Alistair Bamford
Catherine Parkin

07940 555591
01227 700800

Most days George feels lost
He has dementia

We understand dementia

We can help
01795 597431



Bridge Haven

Conyngham Lane, Bridge,
Canterbury, Kent, CT4 5JX

www.avantecaresupport.org.uk

avante
care & support

GARDEN &



PROPERTY

MAINTENANCE

Painting, Brickwork,
Fencing,
Paths, Patios,
Grass and Hedge Cutting
and General Maintenance

L.J. Dwyer
Bridge, Nr Canterbury
01227 830538

DELTA ELECTRICAL SERVICES
DOMESTIC & COMMERCIAL ELECTRICAL CONTRACTORS

SHAUNE MILBURN

TEL: 01304 831350

FAX: 01304 831350

MOB : 07702 333898

EMAIL : deltaelectricalservices@hotmail.co.uk

REGISTERED NICEIC DOMESTIC INSTALLER



PLB Business Services

For all Accountancy &
Business Requirements

Contact **KAREN**

Mobile: 07979 374718 / Email: Kaz4726@hotmail.com

Book - keeping, VAT, Accounts & Payroll

Efficient, Time & Cost Effective Services

Always very reliable & dedicated

Never further than a phone call away



Renville Oast

Bridge, Canterbury, Kent CT4 5AD

Bed & Breakfast



Guests coming for a family occasion and no room to accommodate them? Then book them in at Renville Oast, a picturesque oast-house used for drying hops for the brewery trade. All three guest bedrooms are large and comfortable. There are two rooms with ensuite shower, and a twin-bedded room with private bathroom. All have tea/coffee making facilities and a television. The oast, situated on the outskirts of Bridge village, is set in beautiful countryside, and there is plenty of safe parking.

Tel Mrs Joan Hill on 01227 830215

E-mail: joan.hill@virgin.net

Our website is www.renvilleoast.co.uk

Conservatory cleaning, Fascia
and soffit cleaning
Gutter clearing, Full exterior
cleaning

Domestic cleaners supplied
References provided
Est 5 years in Bridge and
surrounding villages

WINDOW CLEANER
DARREN SANDERSON

RING ME ON 01227 636796
MOBILE 07789711432

ROGERS GARAGE

AUTOMOBILE ENGINEERS
OVERHAULS SERVICING & BODY
REPAIRS. CLASSIC & VINTAGE CAR
RESTORATIONS

Any make of new or second hand
cars supplied

36 HIGH STREET BRIDGE
Nr. Canterbury CT4 5JZ
CANTERBURY 830348

Kent Roofing

Loft Conversions, Tiling
Flat Roofing, Roofs Cut and Pitched
UPVC Facia and Guttering
Roof Windows Fitted
FREE ESTIMATES
Phone 01227 861149

Many special offers each month

BRIDGEWAY STORES



A LONDIS MEMBER

OFF LICENCE *VIDEOS* DVDs*

BAKERY *GROCERIES*

NEWSPAPERS-MAGAZINES

NATIONAL LOTTERY

& INSTANTS RETAILER

£1.00 per night any title

CASH POINT MACHINE - 24 HOUR

READY MADE SANDWICHES, HOT PIES and SNACKS

OPEN SEVEN DAYS A WEEK

MONDAY TO SATURDAY 7am until 8pm

BANK HOLIDAYS 8am until 8pm SUNDAYS 8am until 5pm

2 WESTERN AVENUE, BRIDGE,
CANTERBURY, CT4 5LS

TEL: 01227 830323

Orchard Plastering & Decorating Services

- Plastering • Skimming • Coving
- All aspects of Interior & Exterior painting • Plus a full decorating service
- Fully Qualified & Insured

CANTERBURY

01227 728439

Mob: 07810 723008

www.orchard-plastering.co.uk



for the largest choice call

BERRYS

CANTERBURY LTD

the Premier Letting Agents

1921

90
years
2011

01227 765268

70 Castle Street Canterbury

www.berryscanterbury.co.uk

The Bridge Group
Services for the month of August 2012

Year B	Nackington	Lower Hardres	Bridge	Patricxbourne	Bekesbourne	Readings
Sunday 5 th August Ninth Sunday after Trinity					9.30 am Benefice Service - Holy Communion	NT : Ephesians 4.1- 16 G : 6.24-35
Sunday 12 th August Tenth Sunday after Trinity			9.30 am Benefice Service - Holy Communion			NT : Ephesians 4.25-5.2 G : John 6.35, 41- 51
Sunday 19 th August Eleventh Sunday after Trinity		9.30 am Benefice Service - Holy Communion		8.00 am BCP Communion		NT : Ephesians 5.15-20 G : John 6.51-58
Sunday 26 th August Twelfth Sunday after Trinity	9.30 am Benefice Service - Holy Communion					NT : Ephesians 6.10-20 G : John 6.56-69
Sunday 2 nd September Thirteenth Sunday after Trinity	8.00 am BCP Communion	11.00 am Family Communion	6.00pm Evensong	9.30 am Sung Eucharist	9.30 am Family Service	NT : James 1.17-27 G : Mark 7.1-8, 14- 15, 21-23

The Bridge Group
Services for the month of September 2012

Year B	Nackington	Lower Hardres	Bridge	Patricxbourne	Bekesbourne	Readings
Sunday 2 nd September Thirteenth Sunday after Trinity	8.00 am BCP Communion	11.00 am Family Communion	6.00pm Evensong	9.30 am Sung Eucharist	9.30 am Family Service	NT : James 1.17- 27 G : Mark 7.1-8, 14-15, 21-23
Sunday 9 th September Fourteenth Sunday after Trinity	9.30 am Sung Eucharist	6.00 pm Evensong	9.30 am Family Communion		8.00 am BCP Communion	NT : James 2.1- 10(11-13), 14-17 G : Mark 7.24-37
Sunday 16 th September Fifteenth Sunday after Trinity		9.30 am Family Service	9.30 am Sung Eucharist	8.00 am BCP Communion	9.30 am Sung Eucharist	NT : James 3.1- 12 G : Mark 8.27-38
Sunday 23 rd September Sixteenth Sunday after Trinity	9.30 am Sung Eucharist		8.00 am BCP Communion 11.00 am Family Service	11.00 am Mattins		NT : James 3.13- 4.3, 7-8a G : Mark 9.30-37 OT : Proverbs 31.10-31
<p>Sunday 30th September Back to Church Sunday 11.00 am</p> <p>A special Benefice and Harvest Service will take place in Bridge & Patricxbourne CEP School</p>						
Sunday 7 th October Eighteenth Sunday after Trinity	8.00 am BCP communion	11.00 am Family Communion	6.00 pm Evensong	9.30 am Sung Eucharist	9.30 am Family Service	NT : Hebrews 1.1- 4, 2.5-12 G : Mark 10.2-16

Dear Parishioners

Thank you to Simon for inviting me to write for this issue of the magazine.

In one of the readings in church recently we heard Jesus urging his disciples to 'travel light' ... As one of life's natural hoarders that passage always strikes a chord with me. I've been waiting for August to arrive so that I can do a bit of long-overdue sorting and tidying – hopefully with a bit of judicious throwing away! It's one of those tasks where I have to catch myself in the right mood otherwise I sink into the 'we'd better keep that – you never know when we might need it' kind of sort-out which clears the living areas but leaves the loft bulging!

Learning to travel light – and learning what is truly essential is one of those lessons which takes a life-time of learning. Yet throughout the Bible we are reminded that God knows our needs and will provide – often not quite as we want but that's a learning curve in itself!

If I look back I see the essential bits have often been the relationships – the people who were part of a particular stage of my life... parents, friends, work colleagues and especially those wise companions on the journey who were able to challenge gently how I saw myself and the world and where God was in it all.

I certainly don't profess to have got the 'travelling light' mastered... but perhaps as well as the August house tidy I'll make progress elsewhere in my life - learning to let go of the things that get in the way of the essential things. Lots to work on!

With best wishes

Rev'd Chris Wilkinson

Parish Priest to the Littlebourne Benefice

Your Parish Matters

Mid Week Communion takes place on Tuesday mornings at 9.30am at Bridge Church. This is a short service (20 minutes) and I hope this will provide an opportunity for those who drop children off at school to have time for themselves with God in a quiet atmosphere.

Morning and Evening Prayer. Morning and evening prayer take place at Bridge Church, from Monday to Thursday at 8.30am and 5pm respectively. All are very welcome to attend.

Prayers There is a book for prayer requests on the altar of the Lady Chapel in Bridge Church.

Church Mice –The group meets on the first Tuesday of the month in St Peter's, Bridge from 2pm-3pm. It is a group for preschool children (0-5) and their parents and carers, with play, songs, bible stories, craft and tea and coffee.

The August meeting will take place at Bekesbourne Recreation Ground on Tuesday 7th of August. If it is raining we will meet in Bridge Church. The September meeting will take place on the second Tuesday of the month, the 11th of September in St. Peter's Bridge. All are welcome.

For further information contact Rev. Julia on 830265 .

Church Weddings. *If you, or anyone you know would like to explore the possibility of getting married in church in Bridge, Bekesbourne, Patribourne, Nackington or Lower Hardres please phone the Vicarage to make an enquiry: 01227 830250.*

Further information is also available at www.yourchurchwedding.org

For Baptism and Funeral enquiries please feel able to contact the Vicar .The Church of England seeks to serve the community not just those who go to church.

Dates for your Diary

August

07/08	14.00	Church Mice at Bekesbourne Recreation Ground
	15.00	Holy Communion at New Close
14/08	14.30	Holy Communion at Mansfield Court
21/08	15.00	Holy Communion at Saxon Lodge
28/08	15.00	Hymns at New Close
15/08	14.30	Holy Communion at Highfield

September

11/09	14.00	Church Mice at Bridge Church
04/09	15.00	Holy Communion at New Close
	20.00	After 8's at 7 Windmill Close
06/09	19.30	Health & Healing at 7 Windmill Close
10/09	19.30	Caring & Sharing
11/09	14.30	Holy Communion at Mansfield Court
12/09	10.00	Fish Scheme-Coffee pop in at Bridge Village Hall
18/09	15.00	Holy Communion at Saxon Lodge
	20.00	After 8's at 7 Windmill Close
19/09	15.00	Hymns at New Close
24/09	19.30	Caring & Sharing
25/09	14.30	Holy Communion at Highfield

HOLY LAND PILGRIMAGE 2013. Rev Julia and her husband Rev Chris plus a colleague of theirs (Rev Dom Whitting from Cornwall) will be leading a pilgrimage to the Holy Land from Jan 22nd - 31st 2013, which is open to anyone in the Bridge Benefice (and friends) who would like to join us. We will be visiting all the key sites associated with Jesus' life and ministry, worshipping together as well as encountering some of the living stones - Christians and people of faith living there today engaged in remarkable work. A visit to the Holy Land brings the Bible to life and we would argue is a once in a lifetime experience for Christians. Brochures are available at the back of church for more information or to make a booking or please speak to Julia or look at the link: <http://www.lightline.org.uk/destinations/holy-land/2013/revds-pickles-a-whitting.html#itinerary>

The Vicar tries to have his 'Day Off' on a **Friday** each week. Yes we know he's invisible six days and incomprehensible on the seventh but on a Friday please leave a message on the Vicarage answer phone which will be responded to as soon as possible. The Curate, Rev. Julia will also have her day off on Friday each week.

St. Peter's Church Bokesbourne
in aid of church funds

Boot Fair

School Lane, Bokesbourne, CT4 5ER

Saturday

8th September, 2012

8.00am 'til 12 noon

Pre-booked pitches: £8.00

Phone: 01227 831029 or 830497

Sponsored by:



Bekesbourne Choir Vestry Project

The good news is that we now have sufficient funds pledged towards the estimated cost of our project to install a toilet cubicle and a flower arranging area with cupboards at the back of Bekesbourne Church. I hope that by the time you read this, the contract will have been let and a start date fixed for the middle of September.

The work is expected to take 6-8 weeks, but we hope to continue to hold services as usual. However, the congregation might want to move to the front pews to avoid the dust, coffee may have to be brewed in the Vicar's vestry and the bells may be silent for a while! Watch the pew sheets for the latest news at the end of the summer.

Since I wrote an update in the April magazine, we have received a grant from the Tory Family Foundation and substantially increased grants from Kent County Council and from Viridor Credits. The PCC is extremely grateful to them, as well as to Marshalls Charity, Bekesbourne Parish Council, the Garfield Weston Foundation, Allchurches Trust, the Archbishop's Charitable Trust and a small number of well-wishers, both local and world-wide. We are particularly grateful for the contribution made by the Friends of Bekesbourne Church, which demonstrated strong local support when we applied to national charities.

Jane Millyard

Note for your Diaries

The Friends of Bekesbourne Church Are holding an evening Fashion Show on 19th October, 2012. At Lower Hardres and Nackington Village Hall. Full details in the October issue of the Parish Magazine.

Fish News

The August Fish Scheme Coffee Pop-In will be on Wednesday 8th in Bridge Village Hall and the September one will be on the 12th – both 10 to 11.15. A representative from Hi-Kent hopes to be at the September meeting to help with hearing aids.

Littlebourne & District Royal British Legion

13 members attended our July meeting, including several who have been recovering from illness. We are sorry that Bernie Guyatt and Stan Styles were unable to attend, but wish them well. We have a quietish time during the summer until things hot up towards Poppy Appeal time, so not much to report at present.

Did anyone notice the "deliberate mistake" last month? Our meetings are in fact held on the second Tuesday of each month. Anyone interested in joining us can contact the secretary on 01227 472023 for more information. Our next two meetings are on Tuesdays, 14th August and 11th September both at 8pm in the Recreation Club, Littlebourne.

Ride & Stride

Don't forget the Friends of Kent Churches Ride and Stride on Saturday 8th September. If you are willing to walk or cycle, sign in visitors to the church or sponsor others to do these things, please get in touch with your local church representative. For Patricxbourne, that is Pauline Pritchard (830685) and we have particular need to show willing as FOKC has promised us money towards our wheel window repairs.

Friends of Kent Churches Sponsored Ride & Walk

Saturday 8th September 10.00-18.00

Riders & walkers, sponsors & welcomers, will again be appreciated for the above national event.

The day doesn't have to be a mammoth undertaking—there are several Churches within fairly comfortable walking distance of your own Church, possibly combined with a picnic or pub lunch, with a larger choice for cyclists.

There is a list available of up to 12 Churches within Canterbury City boundaries, which make a very exciting walk or ride. Apart from helping to save historic Kent Churches, the other purpose of the day is enjoyment for the participants.

For more information about taking part, or if you can help by welcoming riders and walkers at the Benefice Church, please contact:-

Bekesbourne	Gill Gillanders	830894	
Bridge	Derek Prior		833808
Lower Hardres	Anne Nichols		
Nackington	Cilla Wright		
Patricxbourne	Pauline Pritchard	830685	

Are There any intrepid people who wish to ride & Stride to raise funds to be shared equally between St.Peters Bekesbourne and The Friends of Kent Churches on Saturday 8th September. At the moment we only have one rider Roger Nicholls, so even if you are unavailable to ride or stride it would be great if you could sponsor him. If you can help in any way please call me. Gill Gillanders 830894



...nth's On the Nail about how the people of Gbap celebrated this year should have included our Christian Aid Week result. We amount raised was a record £2341.87 (which will increase to Aid). This wonderful result was due to the increased efforts of our royal collectors and the generosity of the people of Bridge, Patrixbourne, Bekesbourne and Lower Hardres. Many thanks.

The Tax Justice Bus is coming to Canterbury!

Tax dodging robs developing countries of an estimated \$160bn every year – one and a half times the international aid budget! This summer Christian Aid is taking the message of tax justice around Britain and Ireland in a double-decker bus. At each stop people will have a chance to see how tax dodging affects us all, but particularly the poor. As Loretta Minghella, Director of Christian Aid says, “I am outraged that the world’s poorest people are denied access to education and healthcare, yet unscrupulous companies who are dodging taxes could pay for those services. As Christians we must strive for justice and speak up against systems that keep people in poverty”. Help Christian Aid to shed light on financial secrecy and expose the scandal – visit the bus when it comes to Canterbury on Sunday 16 September. (Contact Jean Barber on 831956 for details of route).

Celebrate Africa

Following the success of its Indian Evening in 2010, Christian Aid Canterbury is celebrating the vitality, diversity and achievement of African countries at St Andrew’s URC hall, Watling Street, Canterbury (next to the car park) on Saturday 15th September from 6-9pm. It will be a fun evening, suitable for all ages. Do come and share it. (See poster elsewhere in the magazine for details).



What you need to know about: SHINGLES

Shingles is a condition caused by the reactivation of the chickenpox virus. Anyone who has had chickenpox at some point in their lives could potentially develop shingles, though it is far more prevalent in people over 50.

People who develop shingles often complain of a headache followed by tiredness, fever and a general unwell feeling. A burning feeling on the body somewhere is common, and can sometimes be extreme. This pain later develops a rash on the upper body or head and neck area and around the eye, which turns into painful, fluid-filled blisters. Eventually these blisters burst and become sores which will crust over and heal. Symptoms usually occur only on one side of the body, most people recover but some continue to feel extreme pain in the areas of the rash that can last for months or even years.

Treatments are available and vary from person to person depending on the severity of the symptoms. Medical advice should be sought within 72 hours of the rash occurring.

The best solution is prevention. Vaccines are available to protect you against the virus developing but are not currently available on the NHS.

All Health Matters, Canterbury is a small, friendly private clinic offering shingles vaccinations for people over 50. If you would like more information, or to book an appointment to be vaccinated, we would be happy to hear from you. Tel: 01227 451233 Email: admin@allhealthmatters.co.uk Web: www.allhealthmatters.co.uk



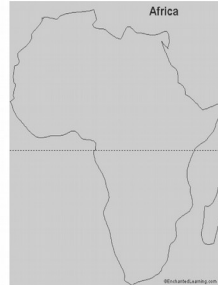
New clinic now open in Canterbury!
 Avoid NHS Waiting lists at our Private GP Practice.
 No membership required – *pay-as-you-go* services.

NEW: Shingles vaccination for over 50's – not available on NHS.

For more info, call us on 01227 451233 or
 E-mail: admin@allhealthmatters.co.uk
www.allhealthmatters.co.uk

Celebrate Africa!

Saturday 15th September
URC Hall
Watling Street
Canterbury 6pm-9pm.



Crafts

Food

Fair Trade Goods.



“Seeds for Africa!”

“Royal Destiny”
sing African Gospel Songs.



All for a **£5** donation to Christian Aid!

(Ring 01227 831956 or 01227 451572)



#

You are invited to

A Family Car Treasure Hunt

Saturday 6th October

4.00 – 6.00

**School drive at rear of The Vicarage,
Bridge**

£5 per car

***This will be followed by a BBQ in
The Vicarage garden 6.00 – 8.00***

@ £2.50 per person

Everyone welcome



Nailbourne Horticultural Society

T
h
e

N
a
i
l
b
o
u

n
e

H
o
r
t

r

The National Vegetable Society - Kent District Association

After taking a stand at the Kent County Show, the Society returns to Bridge Village Hall for a talk by Dusty Miller on **"What is Organic Vegetable Growing?"** on **Wednesday 8 August**, 7.30 pm for 8.00 pm start.

Then on the weekend of 26/27 August, the Society will again be organising what is a most impressive stand at the **Edenbridge Show** prior to its own Vegetable Show to be held, as last year, in Bridge Village Hall on the weekend of **8 and 9 September**. Do pop in to the hall to see and admire the exhibits on display and perhaps be inspired by what can be achieved in the growing of vegetables.

Following on closely, there will be a talk by Heather Willis entitled **"Spring and Autumn in Scotland"** on **Wednesday 12 September**, in **Bridge Village Hall**, 7.30 pm for 8.00 pm start.

The Society is always happy to welcome non-members to its events.

Bridge with Patricbourne Women's Institute

There are two events planned for the month of August. Firstly, on **Wednesday 15 August** between 2.30 and 4.00 pm, we are holding our annual fund-raising **Afternoon Tea** at 17 Union Road, Bridge. As well as cream teas, priced at £2.50, there will be a bring and buy, cake, craft and plants stalls and a raffle. By that time, we hope that the weather will be set into a sunnier pattern and you will be able to relax and enjoy a chat in the garden with friends over a cup of tea. Do come along and support us in this venture.

Then, at the end of the month, on **Wednesday 29 August**, we have an outing planned to the architect **Pugin's house, The Grange, at Ramsgate**. We will leave Bridge at 11.30 am and, weather permitting, we will picnic on the Esplanade close to The Grange prior to our booked tour at 2.00 pm. There is a pavilion cafeteria nearby if it is raining. The cost of entry to the house and the adjacent church is £3 plus a fuel contribution.

Moving on to September, we have a practical evening on **"Origami"** led by Tsuyoko Page organised for **Tuesday 18 September** back at our usual venue, **Bridge Village Hall**, and at our usual time of 7.30 pm. It goes without saying that we are always delighted to welcome visitors at our events.

Delicatessen Freshly Baked Bread Russian Food Preserves Cakes



BRIDGE

FARMERS' MARKET

Fruit and Vegetables Meat Cheesecakes Plants Exotic Foods Crafts

9am-12noon Red Lion Inn CT4 5LB



We hope to see you at these markets during the summer.

11th and 25th August and
8th and 22nd September

*Want to join our mailing list? Or know someone who wants a stall?
Contact Pam at cr.dobson@virgin.net or on 07561 560871*

The Word Became Flesh
Following in the footsteps of Jesus
 A pilgrimage and journey of discovery to
Palestine and Israel

Led by
The Revd Chris, The Revd Julia Pickles
& The Revd. Dom Whitting
 22nd January - 31st January 2013



All welcome – please ask Curate Julia Pickles for a brochure
 (curate@bridgechurch.co.uk, Tel: 01227 530265)
 or contact the tour company directly: www.lightline.org.uk
Lightline Pilgrimages Ltd - Britain's leading Christian Pilgrimage
Operator - Cooperative Hall Farm, Epping, Essex CM16 7PE
 Tel: 0845 6106447 / 0208 281 4882 Email: info@lightline.org.uk
Tour Cost £1655
 Includes full board, air conditioned hotels with en-suite facilities, scheduled
 flights and all entry fees and taxes, qualified English-speaking guide throughout
 and touring in modern air conditioned coaches.
 THE ONLY FEES NOT INCLUDED IN THE PRICE ARE: Single room supplement (limited
 availability) £385, travel insurance £49, gratuities £20, and any items of a personal nature
 (souvenirs & drinks etc).



The Word Became Flesh
Following in the footsteps of Jesus
 A pilgrimage and journey of discovery to
Palestine and Israel

Led by
The Revd Chris, The Revd Julia Pickles
& The Revd. Dom Whitting
 22nd January - 31st January 2013



All welcome – please ask Curate Julia Pickles for a brochure
 (curate@bridgechurch.co.uk, Tel: 01227 530265)
 or contact the tour company directly: www.lightline.org.uk
Lightline Pilgrimages Ltd - Britain's leading Christian Pilgrimage
Operator - Cooperative Hall Farm, Epping, Essex CM16 7PE
 Tel: 0845 6106447 / 0208 281 4882 Email: info@lightline.org.uk
Tour Cost £1655
 Includes full board, air conditioned hotels with en-suite facilities, scheduled
 flights and all entry fees and taxes, qualified English-speaking guide throughout
 and touring in modern air conditioned coaches.
 THE ONLY FEES NOT INCLUDED IN THE PRICE ARE: Single room supplement (limited
 availability) £385, travel insurance £49, gratuities £20, and any items of a personal nature
 (souvenirs & drinks etc).



DEANERY CHILDREN'S DAY

SINK

OR

SWIM

ASH PRIMARY SCHOOL – SAT OCT 13TH

2-5PM (REGISTRATION FROM 1.45PM) – FOR SCHOOL YEARS 1-6 (AGES 5-11)

COME + JOIN CPT. GRAHAM NUNN + HANNAH FROM THE CHURCH ARMY IN

GAMES – CRAFTS – ILLUSIONS – WORSHIP

Nailbourne Horticultural Society
Growing and
Showing Daffodils



An Illustrated talk by
Janine Doulton

Tuesday 25 September
7.30 pm
Bridge Village Hall

All welcome
Small admission charge to include refreshments



Afternoon Tea



Wednesday 15th August

2.30 until 4 pm,
17 Union Road, Bridge



Entry free Cream Tea £2.50
Cakes, Plants, Craft, Bring & Buy, Raffle
All Welcome

Art in Bridge Exhibition

Bridge Village Hall, High Street, Bridge

Saturday 6th October

11am – 7pm Music from 5pm

Sunday 7th October

11am – 5pm

Entrance FREE Refreshments available

Visitors will be invited to vote for their favourite exhibit
The exhibits receiving the most votes will be
announced after the close of the exhibition

Exhibitors Entry Form

From www.artinbridge.org.uk
The Bourne Gallery, Bekesbourne
and in September from
Colebrook Sturrock & Co,
Estate Agents, High Street, Bridge

For further information
please go to the web
site or tel: John Corfield
on 01227 830976

Exhibits to the Hall 4.30 – 6.30 pm
Friday 5th October

www.artinbridge.org.uk

ART SHOW

And sale of work August 26th, 10am – 4pm

Entrance free Light refreshment on sale

Address – 6 Mill terrace, Bridge, entrance in Bourne View

your local flower grower & florist

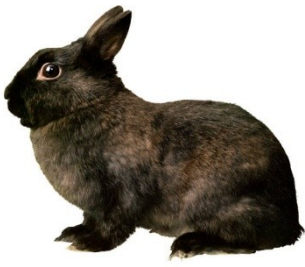


Don't miss out!

- Hop picking starts 20th August
- Seasonal fresh flowers being harvested now
- Dried flowers for lasting colour
- Flower arranging classes

www.essentiallyhops.co.uk
chalkpit farm, Bekesbourne ct4 5eu

Free local delivery
shop@essentiallyhops.co.uk 01227830666



tion that can affect rabbits in the summer months when caused when flies lay their eggs on susceptible animals maggots which start to feed on the poor rabbit. Usually nasty open wounds around your rabbits tail and bottom. Usually grooming all the time in an attempt to get rid of the fly so poorly that he is not eating and very quiet. If you notice it is an emergency as they can cause a lot of damage so you should take the rabbit to your vet practice

immediately as without rapid treatment affected rabbits can die.

To avoid fly strike happening to your rabbit it is important to make sure your rabbit's environment is clean. The hutch should be regularly cleaned out and we recommend that during the summer months you inspect your rabbit's bottom for cleanliness and any signs of fly eggs at least once a day, ideally twice a day as the eggs hatch within hours in warm weather. If your rabbit's bottom is dirty you should seek veterinary advice as this can be a sign of underlying disease. It may be caused by inappropriate diet, dental disease, diarrhoea, urinary or genital problems, obesity or spinal problems such as arthritis and old age which mean the rabbit does not groom itself as well. If the dirty bottom can be treated then fly strike is less likely to occur. There are also products available from veterinary surgeries which can be used to prevent or slow the progression of flystrike.

If you are concerned that your rabbit may be at risk or you would like further information please call **Bourne Veterinary Practice** on **01227 832322**.



FAMILY DAY *

Sunday 26th August from 12.00pm

St. Lawrence & Highland Court Cricket club family day

St. Lawrence and Highland Court Cricket Club invite all players, members, families and villagers to come and support your local club in our club family day. We will be running three 20/20 games throughout the day, with a fully stocked bar, BBQ, raffle and other entertainment running throughout the day; it's the perfect way to spend your Bank Holiday.

Bridge Parish Council www.bridgevillage.org.uk
Notes from Bridge Parish Council meeting 12th July 2012

Neighbourhood Plan – Canterbury City Council had been formally notified of the Bridge Neighbourhood Plan area. Five members of Bridge's Neighbourhood Plan Committee had attended a Government funded training day organised by the Campaign to Protect Rural England. A response on the three possible housing development sites would be sent to the City Council to meet its deadline of 28th September. An analysis of the questionnaires would form the basis of the response regarding possible sites. It would be necessary to hold an extraordinary parish council meeting in August to approve the response.

New Code of Conduct for Parish Councillors- Parish Councillors approved the new Code of Conduct. The Code adopted by the parish council is the same as the Canterbury City Council Code. The City Council would continue to administer the Code as it applied to parishes.

Revised Standing Orders- Councillors adopted the revised Standing Orders required following the approval of the new Code of Conduct.

Re-surfacing of Children's Play Area- It was agreed to use wet pour to re-surface the children's play area. Four quotations had been received but the Clerk would obtain one further quotation before a decision on the preferred three companies was made by the Recreation Ground Committee. Grants would be applied for to help to fund this work.

Proposal for the re-building of the Mill Centre – Cllr Cook outlined a proposal for a section of approximately 1/3rd the Mill Centre site to be offered to the Parish Council by the City Council on a lease of at least 30 years in order to rebuild the Centre. The City Council would offer no financial contribution and the Parish Council would be responsible for finding funding for the new building. Parish Councillors voted unanimously to support the idea in principle and confirmed that funds were available in the reserves for the Mill Centre that could be put towards a new building.

The Executive of Canterbury City Council had earlier voted to give the Mill Centre a new lease for a further two years. The clause restricting its use to uniformed organisations had been removed from the new lease.

Recreation Ground There had been more damage to the guttering round the pavilion caused by footballs being kicked against it repeatedly. It was proposed to bolt the guttering onto the fixing brackets in the hope of making it less likely to be dislodged. Our PCSO had been carrying out foot patrols in Bridge and had the names of those suspected of being responsible for recent episodes of vandalism on the recreation ground.

The next scheduled meeting of Bridge Parish Council will be on Thursday 13th. September at 7.30 pm in Bridge Village Hall. The Planning Committee will meet prior to the Council Meeting at 7.15pm. All Bridge residents are welcome to attend these meetings._

J.W. & L.J. BRASIER LTD

The Workshop-Highland Court Farm

Tel: 01227 831928

Open 8.00am—6.00pm

Full Diesel & Petrol Diagnostic

Servicing & pre-MOT's

Welding

Cars Collected & Returned



Podiatry

ate

y www.bestfeet.co.uk

David Orchard
86 High Street
Wingham
(01227) 451317

FAMILY BUTCHER

LAURIE WAKEHAM

BRIDGE : Tel: Canterbury 830220

PRIME LOCAL ENGLISH MEAT : HOME-MADE SAUSAGES

FRESH POULTRY : COOKED MEATS

MEAT FOR FREEZERS

www.family-butcher.co.uk

Plough & Harrow

Traditional Village Pub Serving Proper Beer

Recently Refurbished

Bar Snacks

Attractive South Facing Courtyard

The Oldest Fire in Bridge

Polite, Friendly, Welcoming Service

Function Room *Free when Bar is used*

Hot & Cold Buffet Catering Available

Under New Management
Licensee: Ranulf Neame

86 High Street, Bridge, Nr Canterbury, CT4 5LA



CS SATELLITE TV SERVICE

CHRIS SHEATHER

5. WHITELOCKS CLOSE, KINGSTON,

Nr.CANTERBURY, KENT. CT46JG.

01227830179

SUPPLY. INSTALL. REPAIRS. DIY ADVICE



PLANNING PERMISSION BUILDING REGULATIONS CHANGE OF USE

Preparation of Drawings, Local Authority Applications,
Contact Supervision, Administration, Estimating,
Builders Quantities, Bills of Quantities, Final Accounts

MICHAEL PEPIATT ASSOCIATES

Quantity Surveyors and Building Surveyors

Mobile: 07973 828356

Tel: 01227 832100

Fax: 01227 832090

email: michael.pepiatt@btinternet.com



*2002-2012 Celebrating
10 Years in Business!*

*Made to Measure Quality
Window Blinds and Shutters
For your home, conservatory, office,
school, hotel and more...*

*Call David or Katie Lester on
01227 720881*

info@elite-blinds.com

www.kentblinds.co.uk

MARTIN SHORT

ALL PLUMBING WORK UNDERTAKEN



Gas Safe Reg. No. 503574

SPECIALIST IN WARM WATER UNDER FLOOR HEATING AND
COMPLETE BATHROOM FITTING

The Unicorn
Bekesbourne Hill
Bekesbourne
Canterbury
Kent CT4 5ED

Tel: 01227 831300
Fax: 01227 831300
Mobile: 07885282372

Email: enquiries@martinshort.co.uk
www.martinshort.co.uk



Domestic Cleaning Services

Tel: 01227 277033
www.supermaids.co.uk
Email: info@supermaids.co.uk

Computer Training In Your Home

Patient trainer, tailored to your needs

Can include: - Word Processing,
Computer basics-from the start
Internet use & internet shopping
Managing / editing your photos
Spreadsheets, powerpoints etc.

Tel: 01227 720869



Old Codgers Logs

Seasoned logs
cut to any size

Full transit tipper load
Free delivery in the Canterbury area
Call: 07786 307733



1 tonne loads £140 with free delivery in local area
Please leave a contact name & number and state whether
you require logs for a wood burning stove or open fire.
Smaller quantities available in bags from Bekesbourne Lane
Bekesbourne (just look for the 'Logs' sign)

T 01227 832610 M 07534 288864
E info@bournetogarden.com



Gardening services including:

- Mowing
- Lawn treatment
- Hedge cutting
- Regular contracts
- Garden clearances
- Landscaping
- Turfing
- Tree cutting
- Fencing
- Weed control

Fully qualified and insured

www.bournetogarden.com
21 Bridge Down Bridge CT4 5AZ



Environment Agency



€ Scape Computing

Local Computer Help and Support

Computer repairs

Computer setup

Virus removal

Upgrades

Data Recovery

Broadband

issues

Computer health & tuning Backup solutions

Networks

Switching

ISP

We visit you or drop your PC into our workshop in Kingston

Est.2000. Local recommendations. Call to see if we can help. **01227 832316.** info@esc-computing.net

The Unicorn



Martin & Shirley
Bekesbourne Hill,
Canterbury, Kent CT4 5ED
01227 850210
www.pubunicorn.com

Opening Times Monday - Saturday
12pm to 3pm 6pm to 11pm
Sunday 12pm to 10.30pm
Tuesday - Sreak Night Specials
Wednesday - Quiz Night
Sunday - BBC 6.30pm
Folk/Acoustic Music - Sunday 8-10.30pm

MARGARET MUIRHEAD MNIMH



Herbalist and Masseur
a wide range of complaints

For advice or consultation
Tel: 01227 720991
Mob: 07946 544227

www.herbalist.canterbury-kent.com

Quiet village location at Littlebourne
Free parking

BRIDGE DENTAL PRACTICE

Mr G Hamill
Mr M Southon
Mrs K Leadbetter
Mrs V Wright

Family Dental Care Available

Weekdays 8.45 - 1.00 & 2.00 - 5.30
Tues & Thurs 'til 8.00pm
Saturdays 9.00 - 1.00

Independent, Full Private, Denplan, &
NHS for Children and exempt Adults

78 High Street, Bridge
Tel: 01227 831110

We come to **Ginger Cat** COMPUTER SOLUTIONS

**PC & Laptop Repairs. Data
Recovery
Networking &
Maintenance.
Repairs & New Systems .
Upgrades.**

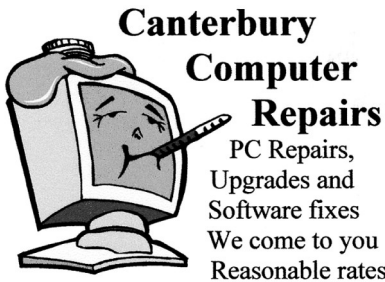
Virus Removal/Protection
01227 700730
07970 455861
info@gingercatcomputers.uk



Paws & Tiaras

**Professional one to one
Cat and Dog grooming
by groomers who care**
01227 07828256817
01227 700730
www.pawsandtiaras.co.uk

You come to us
or
We come to you



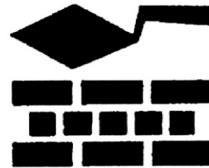
Canterbury Computer Repairs

PC Repairs,
Upgrades and
Software fixes
We come to you
Reasonable rates

and personal local service with our
NO Fix NO Fee guarantee.
Call now - Canterbury 832450

G. Blackwell BUILDING CONTRACTOR

Extensions, Garages
Roofing
Restoration
Alterations etc.



Canterbury: 860480

LOCAL TAXI SERVICE

Airport Transfers, Local and Long Distance

Licensed By Canterbury City Council

Operated By Barry Jones

Email: quotes@thevillagetaxi.com

Call or Text 07735 66 86 86



Period and Listed Property Specialists
Kent Pegs - Slates - Leadwork
Chimneys and Guttering
New Roofs and Repairs
Council Grant Work

Kingston, Canterbury
www.goddardroofing.com
Email: info@goddardroofing.com



YOGA



With Sue
Qualified Instructor

- Thursdays 7.30 - 9pm at:
Charlton Park, Bishopsbourne
- Fridays 9,30 - 11am
at: Barham Village Hall
01227 831455
suzzy.h@hotmail.co.uk



| All aspects of Tree Work
| Hedge Cutting

| Garden / Site Clearances

Call Tony on Tel/Fax: 01227
478604

Mob: 07708 537683

www.hartleetreesurgery.com

Email: tonyhartlee@tiscali.co.uk

NPTC Certificates - Fully insured

54 St Gregory's Road, Canterbury, Kent
CT1 1NU

S & W ASPHALT

FLAT ROOFING SPECIALISTS

16 BROOKLANDS CLOSE
FORDWICH
CANTERBURY
KENT CT2 0BT

Tel: 01227 731576 office
Mobile: 0795 0299346

Bay Tree Bookkeeping & Accountancy

www.bavtreebookkeeping.co.uk



Management Accounts
Annual Accounts
Tax Returns

Sue Leitch -

Chartered Accountant - ACA MAAT

Tel: 01227 709741

Email: hello@baytreebookkeeping.co.uk

Funnell
Electrical

Testing and inspection
New installations
Rewires
Fault finding
Small jobs undertaken

For a Professional
Reliable Service

Contact Tony
Tel: 01227 721309
Mob: 07916 386081

10, Rose Acre Road,
Littlebourne, CT3 1SY



WOODLANDS

hair . beauty . holistic therapies

Ladies & Gents Hairdressing
Hot Stone Massage Spray Tanning Jessica Manicure & Pedicures
Facials Pregnancy Massage & Reflexology Waxing
For more details please visit our website

We look forward to welcoming you to Woodlands very soon!
26a High Street, Bridge, Canterbury, Kent, CT4 5JZ
01227 830120 www.woodlands-bridge.co.uk

Wilco Plumbing & Heating Central Heating Installations & Repairs

Gas & Oil Boiler repairs & replacements

5 Year Guarantee on Worcester Bosch Boilers.

Local Experienced Engineer. All Plumbing & Heating Repairs
24/7 Emergency Service, Over 30 Years experience
Registered with the Institute of Plumbing
Gas Safe Registered, OFTEC Registered

KCC Trading Standards Approved

01303 862173 07860 452640

paul@wilcoplumbing.co.uk

www.wilcoplumbing.co.uk

Court Lodge Farmhouse Bed & Breakfast

Comfortable accommodation
In beautiful village of
Bishopsbourne.

For further details contact:
Jenny Coop
01227 832242
jenny.coop@btinternet.com

Court Lodge Farmhouse Bed & Breakfast

Comfortable accommodation
in the beautiful village of
Bishopsbourne.

For further details contact:

Jenny Coop
01227 832242

jenny.coop@btinternet.com



www.courtlodgefarmhouse.co.uk

www.courtlodgefarmhouse.co.uk

Vicar: Rev Simon Rowlands, Vicarage 23 High Street Bridge (830250)
Curate: Rev. Julia Pickles. 21 High Street, Bridge (830265)
email: curate@bridgechurch.co.uk
Lay Reader: Mrs. Margaret Clarke. (765598)
ALM@Bekesbourne: Mrs P Kusel. 830272). email: patkusel@gmail.com

PATRIXBOURNE WITH BRIDGE

Churchwardens Dr. AM Nicholson, Riverside Cottage, Patrixbourne (830947)
Mrs P Pritchard, 2 St Mary's Rd, Patrixbourne (830685)
Mr L H Dunderdale, 37 High St, Bridge (830668)
email: laurence.dunderdale@btinternet.com
Mrs E Andrews, The Purlins, Meadow Close, Bridge
(830960)
email: purlins@hotmail.com

PCC Secretary Mrs R Beeching, Bridge Down, Bridge
PCCTreasurer Mr C Medhurst, 1 Park View Bridge (830762)
Gift Aid Officer Mrs A Medhurst, 1 Park View, Bridge (830762)
Organist (Patrixbourne) Mr J Harris 1 Riverside Close, Bridge (830631)

BEKESBOURNE

Churchwardens Mrs J Gillanders, Cala, Aerodrome Rd, Bekesbourne
Mrs J Millyard. 10 De Havillands, Bekesbourne (830256)
email: janemillyard1@btinternet.com
PCC Secretary Mrs Nicky Fry, The Old Palace, Bekesbourne (830319)
email: nicolafry@cscope.co.uk
PCC Treasurer Mrs Zan Clifford, Oakleigh Lodge, Bekesbourne (830328)
Organist Mr J Harris 1 Riverside Close, Bridge (830631)
Captain of the Ringers Mrs Gill Moon, The Haven, Aerodrome Rd, Bekesbourne (832134)
On The Nail Advertising-: Mrs C Korzeniowska Middle Pett Farm House, Pett Bottom
(830990) email: c.korzeniowska@btinternet.com

Items for *On The Nail* should reach Laurence Dunderdale by the 15th of the preceding month preferably by email :

laurence.dunderdale@btinternet.com

Please ensure emails and any attachments are clearly titled to identify their content.