



THE STREET  
BRIDGE





CHEMIST

J. H. Clark CHEMIST

NO PARKING

21 CXX

High St

iloll  
vice





Flooding in the Nailbourne Valley  
Groundwater, Riverwater AND Sewage





Impact on Business:  
roads and footpaths effectively  
closed or restricted





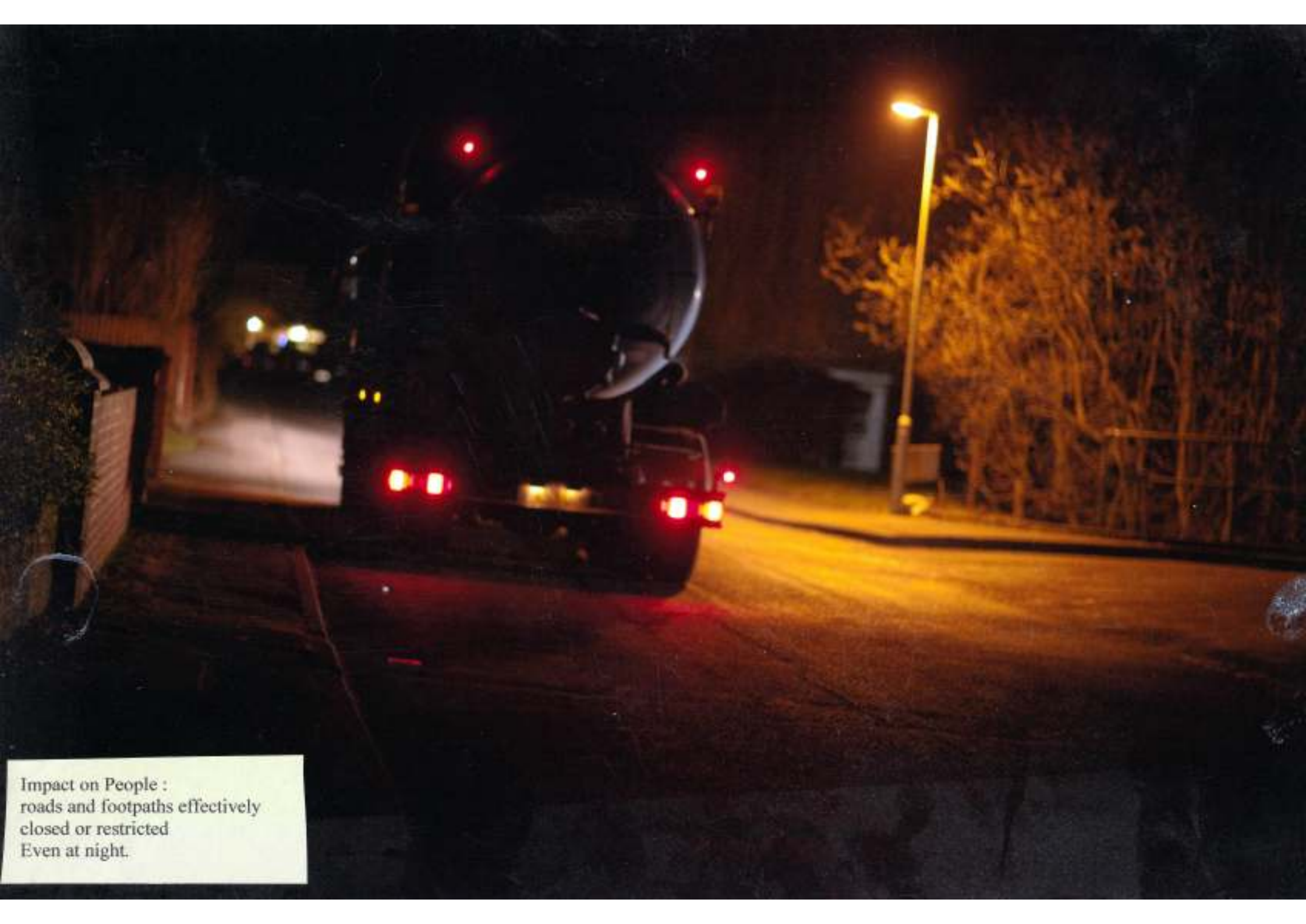
Impact on People :  
roads and footpaths effectively  
closed or restricted





Impact on People :  
roads and footpaths closed or restricted





Impact on People :  
roads and footpaths effectively  
closed or restricted  
Even at night.





Impact on People :  
roads and footpaths closed or restricted





03708 506506

Environment Agency





Blocked Drains, Flooded Streets





Maintenance of the River Stour





Impact on People :  
roads and footpaths closed or restricted





Impact on People :  
roads and footpaths effectively  
closed or restricted









OLD PALACE ROAD





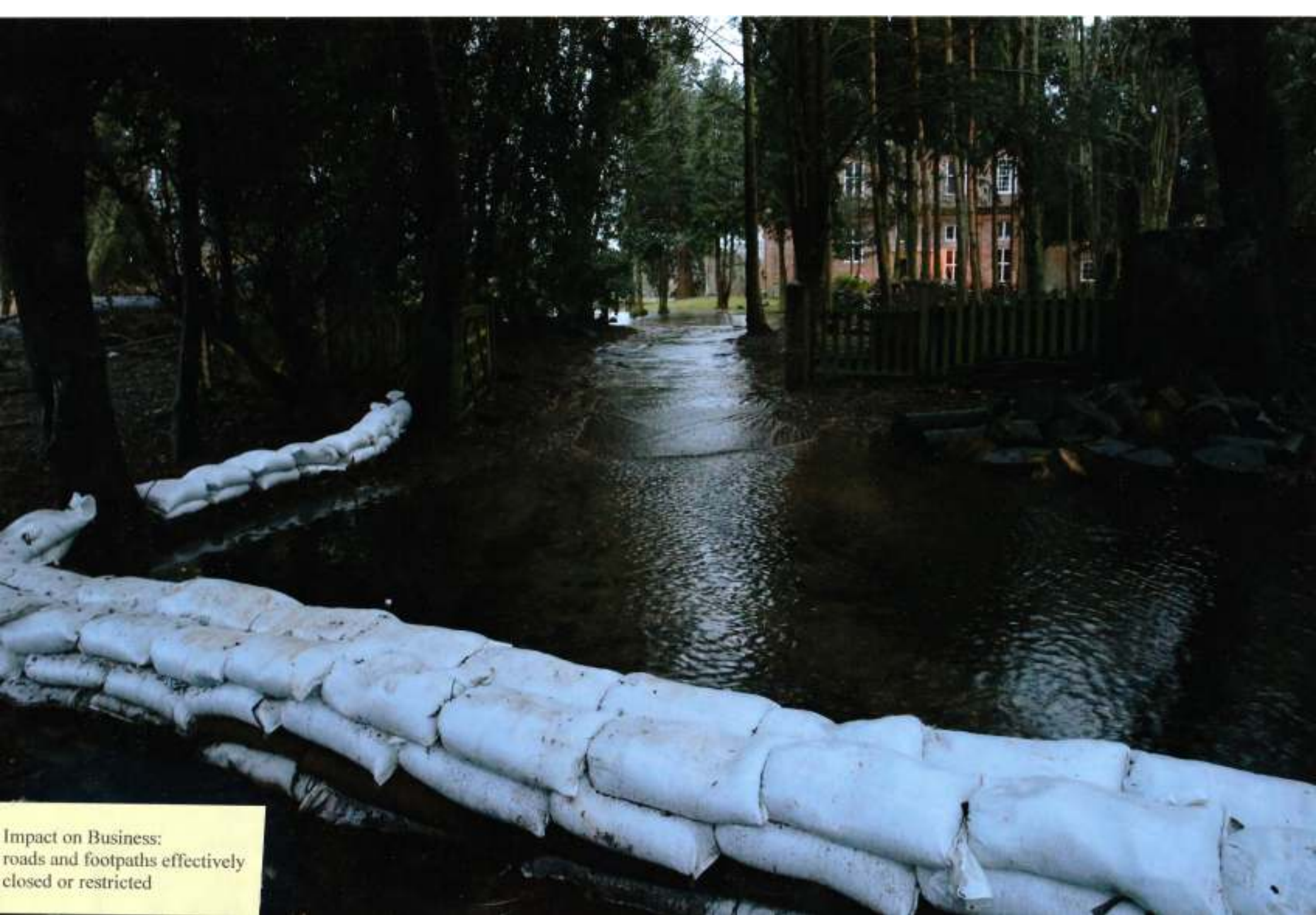












Impact on Business:  
roads and footpaths effectively  
closed or restricted





Contamination by sewage  
Loss of amenity



Groundwater flooding  
leads to flooding by sewage







Blocked Drains, Flooded Streets



Impact on People :  
roads and footpaths closed or restricted







Groundwater flooding leads to flooding by sewage









Impact on People :  
roads and footpaths closed or restricted









Blocked Drains, Flooded Streets





Blocked Drains, Flooded Streets







We're fixing  
a broken  
sewer pipe

No. 5600 075 0845  
www.southernwater.co.uk



SOUTHERN WATER

**Clancy Docwra**

Carrying out essential street works  
on behalf of Southern Water

**Emergency Telephone  
0845 278 0845**

Sorry for any  
inconvenience

## THE NAILBOURNE EMERGENCY OVERPUMPING

Please note burbling and/or over-pumping of dilute screened sewage to the watercourse is being undertaken to protect customers from flooding and lack of drainage.

It is advised to keep children & pets from the watercourse in the vicinity of this discharge. If you have contact with the water please ensure you wash your hands before eating or drinking.

If you have any concerns please contact:

**Southern Water 0845 278 0845 Quoting Ref: 146653**







**SELWOOD**



THIS CAN ONLY BE  
REMOVED IF  
THE UNIT IS EMPTY





Playground



We're Doing a Garden  
www.rdg.co.uk

Clare's Skips  
Please do not load with  
flammable liquids like  
gasoline or petrol  
Emergency Telephone  
0845 276 8845

SELWOOD

Highways Authority  
for the County of Hampshire







Contamination by sewage  
Loss of amenity





Maintenance of the River Stour